

Seamless, wide-area, consistent, and current elevation data is critical for a variety of geospatial applications. Intermap Technologies® NEXTMap® digital elevation models (DEMs) provide accurate elevation data throughout the world – starting at 1 vertical meter LE90% – to help you perform more efficient and accurate analyses.

OPTIMIZED DATA TO ENHANCE YOUR PROJECT

Our DEMs are derived from multiple sensor technologies to ensure the best-of-breed 3D terrain information in your area of interest. Our ISO-certified geospatial processing facility optimizes our NEXTMap DEMs to ensure they are seamless and consistent in all areas. The DEMs are void-filled in which missing data as a result of shadows, complex terrain, and / or look direction are filled via interpolation or with ancillary data to create a fully populated elevation dataset.

BEST-OF-BREED DEM OFFERINGS

Intermap® offers a variety of best-of-breed DEMs to suit your needs. Our DEMs include:

- **Digital surface model (DSM)** – a first-reflective-surface model that contains elevations of natural terrain features in addition to vegetation and cultural features such as buildings and roads.
- **Digital terrain model (DTM)** – a bare-earth model that contains elevations of natural terrain features such as barren ridge tops and river valleys. Elevations of vegetation and cultural features, such as buildings and roads, are digitally removed.

Both the DSM and DTM are available in two different versions:

- **Hydro-enforced DEMs** – ensure structures over water bodies (such as bridges) are removed, water surfaces are flat, and watercourses flow downstream – making them ideal for water resource and floodplain management applications. These models are denoted by the letter “H” in front of the product (HDSM, HDTM).
- **Ortho-ready DEMs** – elevations of bridge decks are maintained and roads are smooth to accommodate the use of DEMs in orthorectification of optical imagery. These models are denoted by the letter “O” in front of the product (ODSM, ODTM).

The consistency, seamlessness, and currency afforded by our DEMs enable you to perform accurate cross-border geospatial analyses, such as:

DSM

- Line-of-sight
- Viewshed analyses
- Forestry applications
- Applications that require above-ground features

DTM

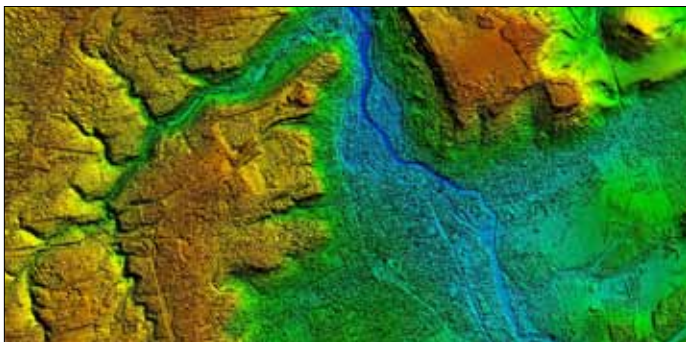
- Contour generation
- Base, geologic, and topographic mapping

HDEM

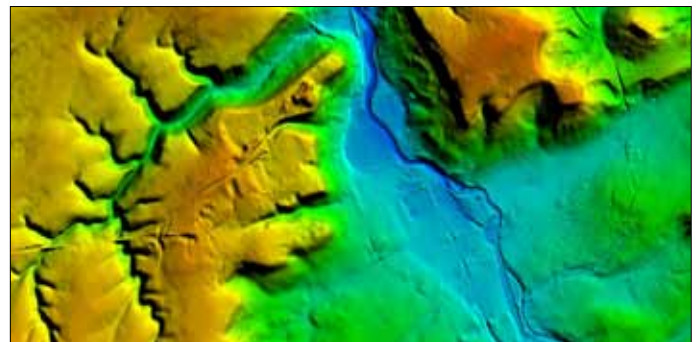
- Water resource management applications
- Flood modeling
- Flood risk analysis

ODEM

- Orthorectification of optical imagery



Digital Surface Model in France
Resolution: 5m
Vertical Accuracy: 1m LE90%



Digital Terrain Model in France
Resolution: 5m
Vertical Accuracy: 1m LE90%

NEXTMAP DIGITAL ELEVATION MODEL ACCURACY SPECIFICATIONS

LOCATION	DATA TYPE	RESOLUTION	VERTICAL ACCURACY	COVERAGE AREA
United States (including Hawaii and parts of Alaska), Western Europe, Malaysia, and parts of Australia	DSM, DTM, HDEM, ODEM	5m	< 1m LE90%	40%
			1–3m LE90%	40%
			> 3m LE90%	20%
Indonesia, Puerto Rico, Jamaica, Solomon Islands, Vanuatu	DSM, DTM, HDEM, ODEM	5m	< 3m LE90%	40%
			3–5m LE90%	40%
			> 5m LE90%	20%
World	DSM, HDSM, ODSM	30m	16m LE90%	United States
		90m	20m LE90%	Rest of the world

INSTANT ACCESS VIA WEB SERVICES

Our web services enable you to immediately access NEXTMap products for your area of interest. Since the data is hosted and stored in the cloud, costs and resources associated with storing and managing large datasets locally can be reduced. Our NEXTMap database is updated twice a year to integrate newly available, best-of-breed elevation data – providing you with the most current data available. In addition, we offer NEXTMap-based online tools that allow users to perform simple analyses from any web browser and make better terrain-based decisions without the need for any GIS software. Our NEXTMap products are available via our web services as a one-time purchase or a variety of subscription plans – helping you to save time and money. Intermap’s web services enable you to easily subscribe and access the data you need, when you need it.

LEARN MORE

For more information about how you can benefit from Intermap’s NEXTMap digital elevation models for your geospatial needs, please contact your Intermap representative or an Intermap Business partner.



Americas Headquarters
Denver, CO, USA
+1 303-708-0955

Asia, Pacific Headquarters
Jakarta, Indonesia
+62 21 719 3808

www.intermap.com
info@intermap.com