

Intermap Technologies® has created an enhanced dataset showing public land areas in the United States, seamlessly representing federal, state, and local land boundaries. The land steward boundary dataset provides coverage for land areas managed by the Bureau of Land Management (BLM), U.S. Forest Service (USFS), National Park Service (NPS), U.S. Fish and Wildlife Service (USFWS), and many other government agencies.

Developed with an extensive polygonal feature editing process, the land steward boundary dataset allows you to display the public lands in a particular region, plan access routes to remote areas, and build initial site maps as well as recreational maps – all with more accurate information than previously available.

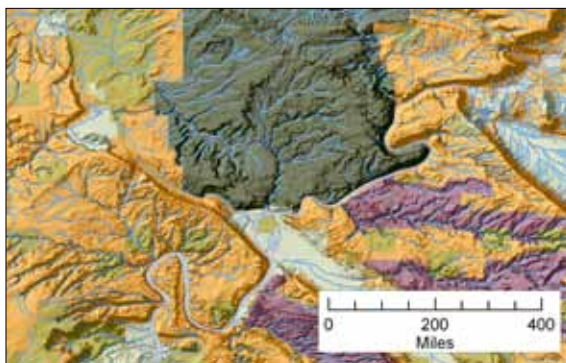
### ENHANCED DATASET FOR LAND CLASSIFICATION

In addition to using the Gap Analysis Program (GAP) dataset, Intermap enhanced the land steward boundary dataset with additional GIS datasets acquired from state and local agencies. The edits to these land boundaries, using feature attribution, standardized and classified the land steward boundary dataset features into nearly 50 easy-to-understand categories, including:

- Federal land such as BLM land, federal recreation areas, national forests, wilderness areas, monuments, Indian reservations, and national conservation areas
- State land such as state forests, conservation areas, wildlife management areas, historic sites, open spaces, and parks
- Local land such as conservation areas, recreation areas, wilderness areas, historic sites, wildlife management areas, and local open space

Organizations and agencies that can benefit from the land steward boundary dataset include:

- GPS and digital map providers
- State, local, and municipal governments
- Federal land management agencies
- Oil and gas organizations
- Development and engineering firms
- Environmental organizations
- Emergency responders



*Land steward boundary data displayed as a polygonal feature layer that has been geometrically corrected and attributed to more accurately depict public land holdings.*

### INSTANT ACCESS VIA WEB SERVICES

Our web services enable you to immediately access NEXTMap products and services for your area of interest. Since the products and services are hosted and stored in the cloud, costs and resources associated with storing and managing large datasets locally can be reduced. Our NEXTMap database is updated twice a year to integrate newly available, best-of-breed 3D terrain information – providing you with the most current information available. In addition, we offer NEXTMap-based online tools that allow users to perform simple analyses from any web browser and make better terrain-based decisions without the need for any GIS software. Our NEXTMap products and services are available via our web services as a one-time purchase or a variety of subscription plans – helping you to save time and money. Intermap's web services enable you to easily subscribe and access the terrain-based information you need, when you need it.

### LEARN MORE

For more information about how you can benefit from Intermap's land steward boundary dataset for your geospatial needs, please contact your Intermap representative or an Intermap business partner.