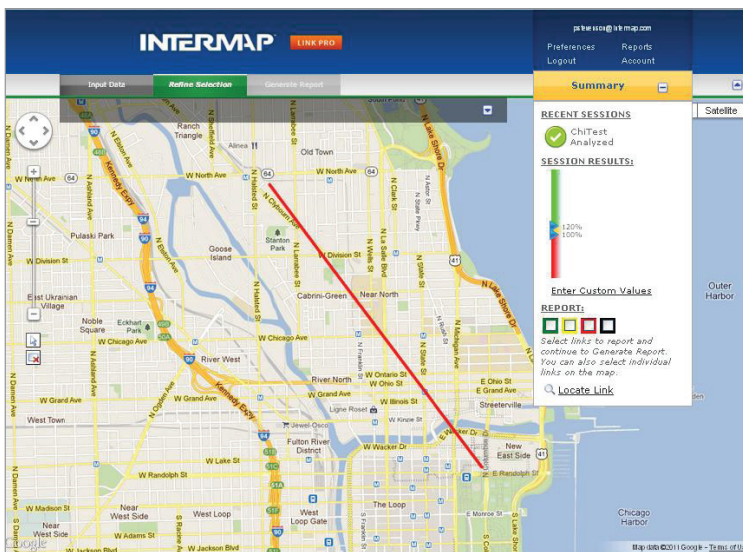


MICROWAVE LINK PLANNING MADE MANAGEABLE

Smart phone usage is at an all time high with users demanding more and more data transfers along with faster speeds and consistent coverage. Carriers are responding by deploying microwave solutions to manage backhaul where fiber is nonexistent or too expensive. Every wireless carrier is facing this same problem and is in a race to build a solution faster and better than their competitors. LinkPro™ is a planning tool that will minimize deskplan iterations and cut down field verifications, not only saving money but also saving crucial time in the race to stabilize network infrastructures. Microwave link planning and development will reach \$34 billion in worldwide revenue by 2014, and swift infrastructure installation is essential to getting and keeping a competitive advantage.



Until recently, the wireless telecommunications industry relied on obtaining information from several separate sources. Understanding the best microwave links for strategic and tactical service planning was a chore measured in weeks and at significant costs. Not anymore.

INTRODUCING LINKPRO: MAKE YOUR MICROWAVE LINK PLANNING MORE PROFITABLE

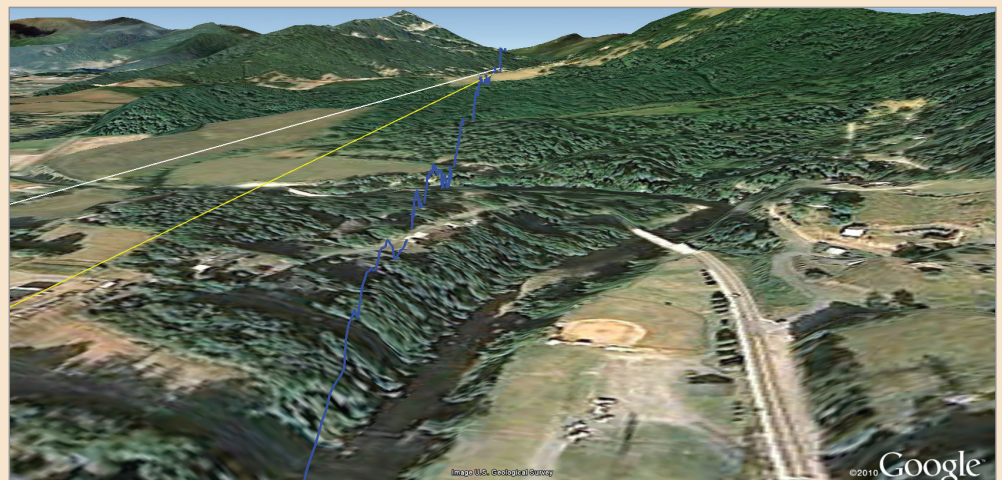
Intermap, a leading provider of location-based information solutions for over 15 years, has developed a Web-based application called LinkPro that will revolutionize the way you manage and grow your microwave link planning business.

LinkPro combines Intermap's 5-meter posted, 1-meter vertical RMSE NEXTMap® clutter height data along with user-defined tower locations and key planning tools into one convenient and easy-to-use Web service. Aimed at cell carriers, infrastructure

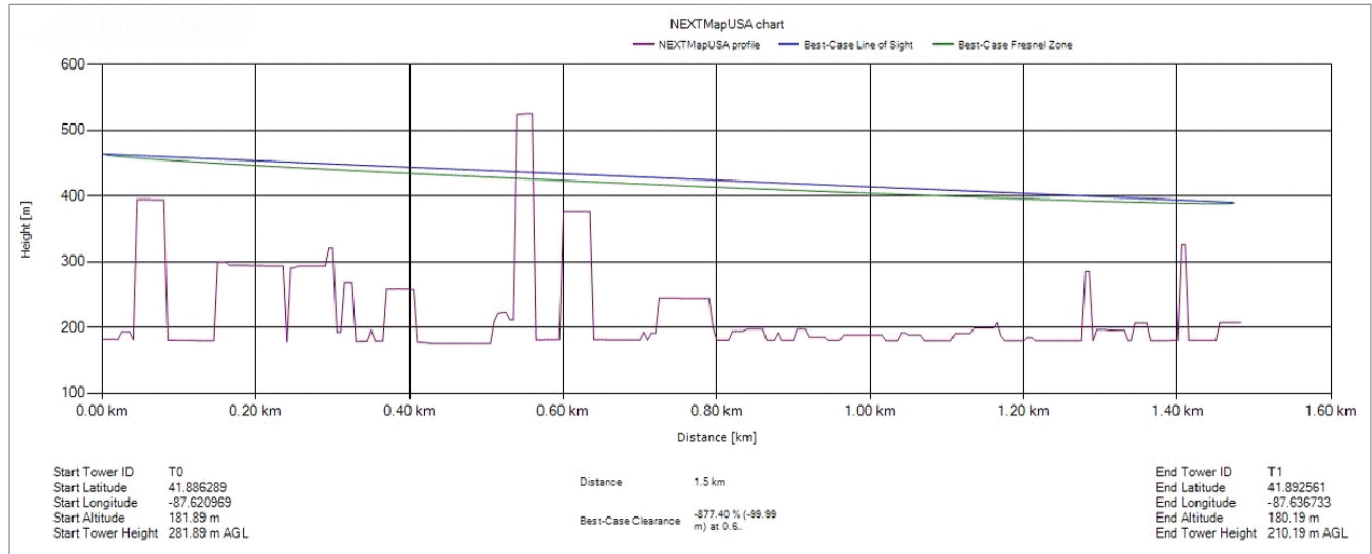
planning companies, telco service companies, MLP software providers, and cell tower owners, LinkPro provides customers with in-depth terrain and clutter analysis for any potential link in the continental US or Europe, including instant feedback and visual validation with the click of a mouse. This allows telcos and planners to instantly analyze and view their network links, and filter a complex spider web to a classified and rankable network that can help simplify the front end of their planning and development workflow of 4G WiMax and Long Term Evolution (LTE) wireless networks globally.

PROVEN RESULTS

Ericsson Network Services used LinkPro for its Telekom Deutschland Mobile Project in Germany. By using Intermap's online tool and NEXTMap data, Ericsson identified over 1,500 potential cell tower sites. Two hundred and ninety three sites were selected in less than two months, thereby reducing the need for physical site surveys by 70 to 80 percent.



Using the LinkPro application, microwave link planners can quickly build an any-to-any network and immediately identify all valid links from links with obstructions penetrating the Fresnel Zone or blocking the line-of-sight between towers. Results can be viewed immediately online via clear map-based graphical representations of any given market that are color-coded based on clearance. Additionally, elevations at 5-meter intervals compiled from Intermap's digital terrain model (terrain) and digital surface model (clutter) exportable as a Text file for each link. These Text files can be imported into other commercial microwave link planning software to create accurate 5-meter direct path profile models representing both the terrain and the clutter separately. This provides telecommunication companies the flexibility to fulfill their infrastructure planning needs without the requirement for any alterations to the existing work flow.



SIGN UP FOR LINKPRO TODAY!

Signing up for LinkPro is easy. Click on www.intermap.com/linkpro today, provide your information and you gain instant access to all of these key LinkPro features and many more:

1. Accurate Clutter: contains the industry's most accurate and comprehensive clutter database.
2. Inventory Loading: upload your tower database into LinkPro and manage it from anywhere. Or, let LinkPro manage it for you.
3. Planning Tools: Fresnel clearance analysis, tower height adjustment, link viability and more.
4. Private Label: label LinkPro with your company's brand or your logo to provide that personalized experience.
5. 3D Visualization: color coded links in easy-to-view 3D map-based graphics.



ABOUT INTERMAP

Headquartered in Denver, Colorado, Intermap (www.intermap.com) is a leading provider of location-based information solutions. For over fifteen years, the company has set the industry standard for creating high-resolution 3D digital models of the earth's surface. For more information about LinkPro, please visit <http://www.intermap.com/linkpro>.



Americas Headquarters
Denver, CO, USA
+1 303-708-0955

Asia, Pacific Headquarters
Jakarta, Indonesia
+62 21 719 3808

www.intermap.com
info@intermap.com