

ORTHORECTIFIED RADAR IMAGE

INTERMAP™

SOLUTIONS

Intermap Technologies® provides seamless, consistent, and accurate orthorectified radar images (ORIs) ideally suited for feature interpretation and extraction. These grayscale radar images of the earth's surface have been corrected to remove geometric distortions caused by the terrain. NEXTMap® ORIs are available in many areas throughout the world at unprecedented resolutions – ranging from .625m to 2.50m pixels.

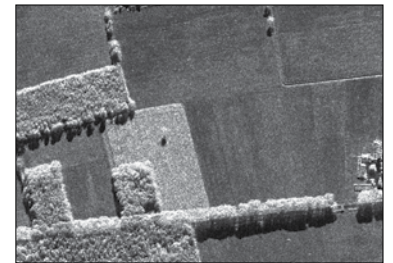
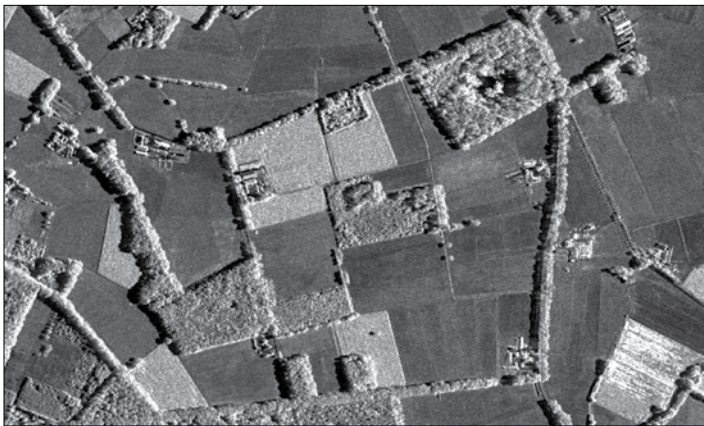
CLOUD-FREE, ENHANCED IMAGES

Intermap's interferometric synthetic aperture radar (IFSAR) sensors, used to collect the ORI, allow us to penetrate clouds, smoke, and haze to produce clear, sharp images of the earth. This technology is critical in regions where there is persistent cloud cover. These images are corrected using our seamless, wide-area, and consistent digital surface models (DSMs) that are void-filled to accurately repair distortions associated with the slope of the terrain. In addition, the images are tone-balanced to account for inconsistencies in the saturation during the imaging process.

Our highly skilled people, development of advanced technology, and continuous refinement of our data processing and imagery enhancement procedures enables us to provide accurate data that satisfies your geospatial needs.

Our NEXTMap ORIs provide highly detailed images to enable:

- Base, topographic, and geological mapping
- Land cover classification
- Forestry applications
- Feature extraction
- Visualization



A .625m-resolution ORI depicting a farm. Notice the sharpness and level of detail of the individual buildings and trees.

NEXTMAP ORTHORECTIFIED RADAR IMAGE ACCURACY SPECIFICATIONS

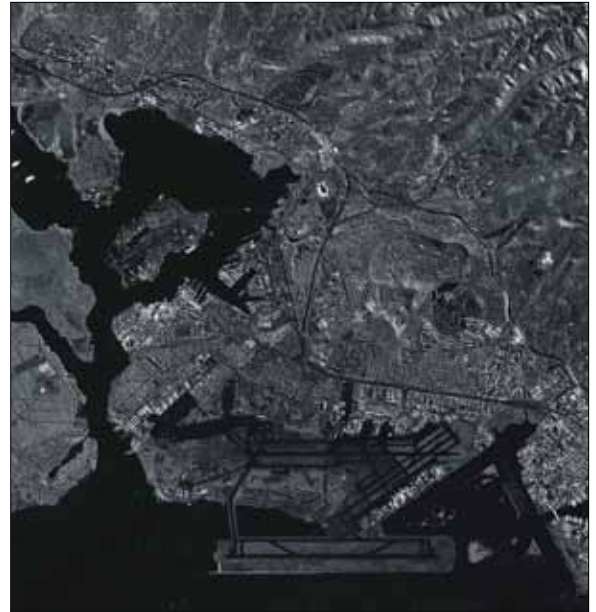
LOCATION	RESOLUTION	HORIZONTAL ACCURACY	COVERAGE AREA
United States (including Hawaii and parts of Alaska), Western Europe, Malaysia, and parts of Australia	.625m	3m CE90%	4%
	1.25m	4m CE90%	94%
	2.50m	5m CE90%	2%
Indonesia, Puerto Rico, Jamaica, Solomon Islands, Vanuatu	1.25m	4m CE90%	90%
	2.50m	5m CE90%	10%

INSTANT ACCESS VIA WEB SERVICES

Our web services enable you to immediately access NEXTMap products for your area of interest. Since the data is hosted and stored in the cloud, costs and resources associated with storing and managing large datasets locally can be reduced. Our NEXTMap database is updated twice a year to integrate newly available, best-of-breed elevation data – providing you with the most current data available. In addition, we offer NEXTMap-based online tools that allow users to perform simple analyses from any web browser and make better terrain-based decisions without the need for any GIS software. Our NEXTMap products are available via our web services as a one-time purchase or a variety of subscription plans – helping you to save time and money. Intermap's web services enable you to easily subscribe and access the data you need, when you need it.

LEARN MORE

For more information about how you can benefit from Intermap's NEXTMap orthorectified radar image for your geospatial needs, please contact your Intermap representative or an Intermap Business partner.



A 1.25m-resolution ORI, Pearl Harbor, Hawaii, USA.

INTERMAP™

Americas Headquarters
Denver, CO, USA
+1 303-708-0955

Asia, Pacific Headquarters
Jakarta, Indonesia
+62 21 719 3808

www.intermap.com
info@intermap.com