

# TERRAIN-DERIVED COASTLINE DATASET

INTERMAP™

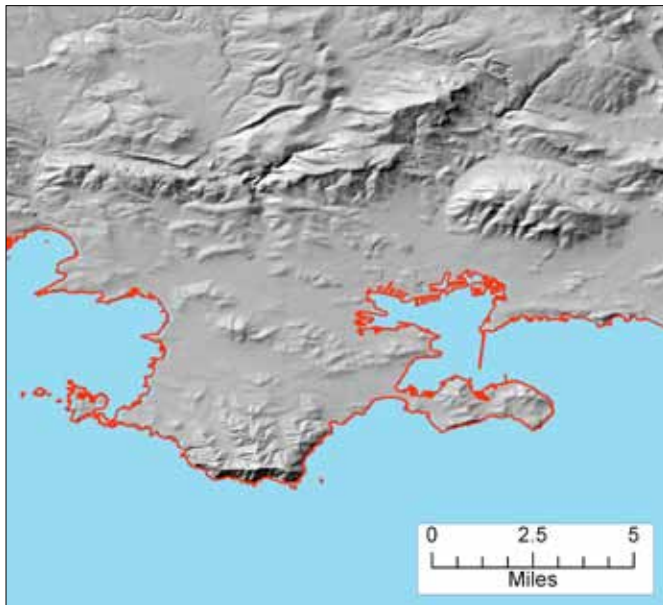
SOLUTIONS

Intermap Technologies® has developed a coastline dataset from its NEXTMap® digital terrain model (DTM), resulting in a detailed vector representation of all coastlines throughout the world. Because the terrain-derived coastline dataset is produced by Intermap and is ready to use, you can focus on coastal GIS applications rather than the aggregation and development of a new coastline dataset.

Additionally, its 8m-horizontal LE90% accuracy (dependent on water level or tide) provides a more accurate placement of the coast than publicly available sources – enabling you to complete your analyses more efficiently and correctly.

## BUILT ON THE FOUNDATION OF NEXTMAP

Our terrain-derived coastline dataset is generated from our best-of-breed NEXTMap 3D terrain data for the world. NEXTMap includes digital elevation models and orthorectified radar images that are derived from multiple sensor technologies and optimized to ensure seamlessness and consistency. The data is wide-area and current – with vertical accuracies starting at 1m LE90%. Our NEXTMap database is updated twice a year to integrate newly available, best-of-breed 3D terrain information – providing you with the most current data available.



Line features (in red) depicting the coastal shoreline along a grayscale NEXTMap DTM.

## FLEXIBLE PRICING AND DELIVERY

Our terrain-derived coastline dataset is being created worldwide. For Western Europe, the dataset is readily available through our web services. Our web services enable you to immediately access NEXTMap products and services for your area of interest. Since the products and services are hosted and stored in the cloud, costs and resources associated with storing and managing large datasets locally can be reduced. In addition, we offer NEXTMap-based online tools that allow users to perform simple analyses from any web browser and make better terrain-based decisions without the need for any GIS software. Our NEXTMap products and services are available via our web services as a one-time purchase or a variety of subscription plans – helping you to save time and money. Intermap's web services enable you to easily subscribe and access the terrain-based information you need, when you need it.

For regions outside of Western Europe, our terrain-derived coastline dataset is available as a built-to-order data layer via our custom subscription plan and delivered via FTP or hard drive – helping you to save production time and reduce costs. We'll help you customize a plan with the product offerings that fit your project needs.

## LEARN MORE

For more information about how you can benefit from Intermap's terrain-derived coastline dataset for your geospatial needs, please contact your Intermap representative or an Intermap business partner.

INTERMAP™

0412.2

Copyright 2012. Intermap Technologies®. All rights reserved.

Americas Headquarters  
Denver, CO, USA  
+1 303-708-0955

Asia, Pacific Headquarters  
Jakarta, Indonesia  
+62 21 719 3808

www.intermap.com  
info@intermap.com