

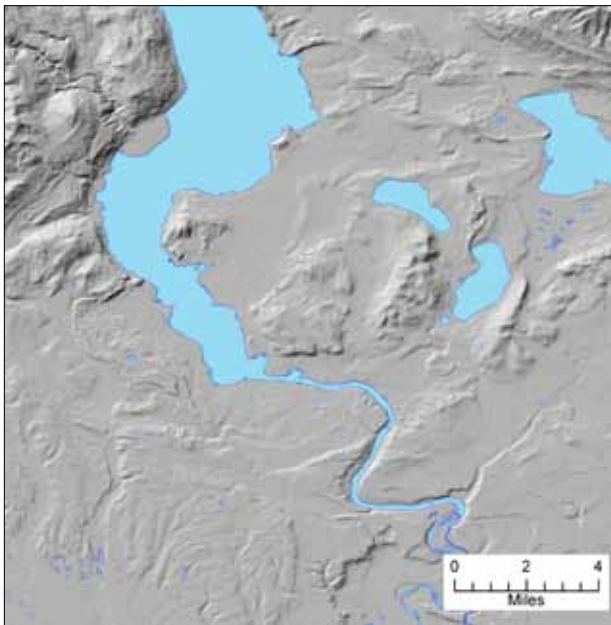
Inaccurate and missing water bodies in your hydrology dataset are things of the past: Intermap Technologies® has developed a hydrology dataset that provides water bodies and double line drainages (streams greater than 20m, or 22 yards, in width), enabling more accurate flood modeling and water management analyses. Derived from our NEXTMap® digital terrain model (DTM) – a more current and detailed alternative to publicly available hydrology datasets – Intermap's® terrain-derived hydrology dataset also enables accurate stream flow analysis, soil erosion assessment, and snowmelt runoff predictions.

Because the terrain-derived hydrology dataset is prepared by Intermap, you can focus on water management applications rather than the aggregation and development of a hydrological dataset.

EXTENSIVE COVERAGE OF WATER BODIES

Organizations and agencies that can benefit from the terrain-derived hydrology dataset include:

- Federal, state, and local water management authorities
- Commercial organizations needing an accurate hydrology dataset for flood analysis
- Environmental agencies for hazard and risk assessment



Terrain-derived hydrology data representing lakes and larger rivers as polygonal features in commonly used vector formats.

BUILT ON THE FOUNDATION OF NEXTMAP

Our terrain-derived hydrology dataset is generated from our best-of-breed NEXTMap 3D terrain data for the world. NEXTMap includes digital elevation models and orthorectified radar images that are derived from multiple sensor technologies and optimized to ensure seamlessness and consistency. The data is wide-area and current – with vertical accuracies starting at 1m LE90%. Our NEXTMap database is updated twice a year to integrate newly available, best-of-breed elevation 3D terrain information – providing you with the most current data available.

In addition, the NEXTMap data is hydro-enforced to ensure that structures over water bodies (such as bridges) are removed, water surfaces are flat, and watercourses flow downstream – resulting in reliable representations of drainage basins for detailed slope and flow analyses and accurate water management practices.

FLEXIBLE PRICING AND DELIVERY

Our terrain-derived hydrology dataset is available as a built-to-order data layer via our custom subscription plan and delivered via FTP or hard drive – helping you to save production time and reduce costs. We'll help you customize a plan with the product offerings that fit your project needs.

LEARN MORE

For more information about how you can benefit from Intermap's terrain-derived hydrology dataset for your geospatial needs, please contact your Intermap representative or an Intermap business partner.



Americas Headquarters
Denver, CO, USA
+1 303-708-0955

Asia, Pacific Headquarters
Jakarta, Indonesia
+62 21 719 3808

www.intermap.com
info@intermap.com

0412.2

Copyright 2012. Intermap Technologies®. All rights reserved.