



**INTERMAP**  
Answers Now™

**NEXTMAP**®  
Slope and Aspect



## Global Slope Information

---

NEXTMap Slope and Aspect™ layers are available as both visualization overlay and raw data analytic layers. NEXTMap Slope and Aspect provide detailed steepness information on the terrain. NEXTMap Slope is available for immediate use for planning, visualization, and site assessment analysis. NEXTMap Slope and Aspect are offered as a much more cost-effective solution and available at a fraction of the cost of owning raw elevation models.

## Built on the foundation of NEXTMap

---

NEXTMap Slope and Aspect is calculated from NEXTMap DTM and show the steepness of the surface. The aspect is the compass direction of the slope. These two data sets are available globally as a both a visualization layer as well as raw floating points. The visualization layer is pre-rendered and provides easy overlays for large-scale planning and site selection. For detailed analysis on areas of interest, the raw slope and aspect data can be downloaded for custom measurement, modelling, and visualization layers.

## Instant access via data subscriptions

Intermap's cloud services enable you to immediately access data products and services for your area of interest. Since the products and services are hosted and stored in the cloud, costs and resources associated with storing and managing large datasets locally are reduced. Our NEXTMap database is frequently updated providing you with the most current information available. Additional data sets, online tools, and analytics are also available to perform simple analyses from any web browser and enable better terrain-based decisions without the need for any GIS software.

NEXTMap Slope and Aspect is available through the standard Open Geospatial Consortium (OGC) Web Mapping Service (WMS) protocol and Web Content Service (WCS) that is compatible with hundreds of third-party tools and applications. WMS is used for visualization purposes since slope and elevation data is not contained in the image. WCS is used for providing raw slope data for detailed access. Data access is available through two low-cost options: an annual per user subscription or as a pay-as-you-go subscription service.

## Specifications

| Item                    | Specification  |
|-------------------------|--|
| Data Type               | Slope Aspect Raster RGB<br>Slope Aspect Raster Float |
| Data Sources & coverage | NEXTMap 5 DTM (Regional)<br>World 10 DTM (Global)    |
| Resolution              | Available in 5m or 10m                               |
| Subscription            | Pay as you go, or annual user subscription           |
| Protocol                | WMS (Raster RGB)<br>WCS (Raster Float)               |

## Learn more

For more information about how you can benefit from Intermap's slope and aspect images for your geospatial needs, please contact your Intermap representative or an Intermap business partner.

**INTERMAP**

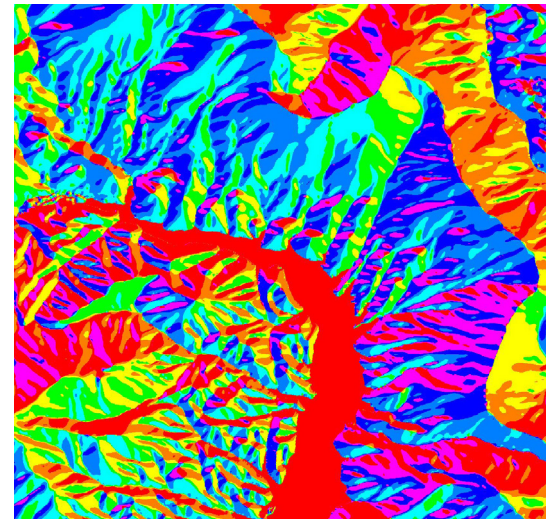
Answers Now™

Visit [www.intermap.com](http://www.intermap.com)  
or call +1 (303) 708-0955  
for more information.

Intermap Technologies® is an industry leader serving a diverse geospatial marketplace. We provide highly accurate geospatial information to help commercial enterprises and government agencies make better location-based decisions.

Copyright 2018. Intermap Technologies®.  
All Rights Reserved.

[INTERMAP.COM](http://INTERMAP.COM)



*NEXTMap Aspect rendered as a visualization layer shows the compass direction of the slope in a false colored image*

**NEXTMap® Data Subscriptions are available now.**  
**Contact Intermap to access free demo datasets and analytics today!**