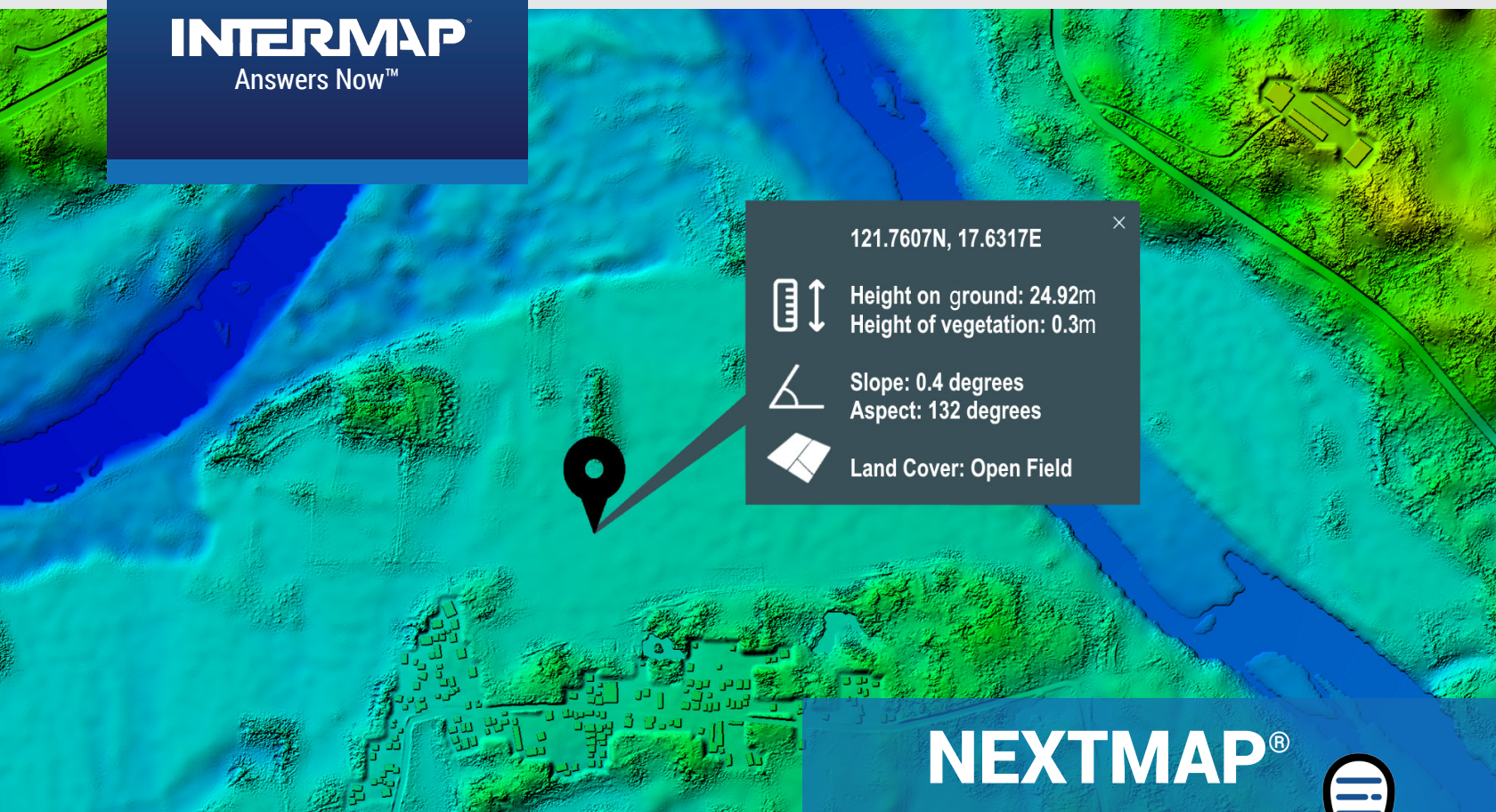


**INTERMAP**  
Answers Now™



**NEXTMAP**®

Values



## Information at Any Place in the World

Intermap's Values™ service provides precise information at any point in the world. Based upon our accurate NEXTMap Foundation Data products, Values retrieves accurate information at a precise location. Information includes the following: height above sea level, tree height, land cover, slope, aspect, etc. Hosted on our Intermap cloud, Values gives your business fast access to accurate information for your assets and analysis anywhere in the world without the need to manage and host data. Values is available through our web application or through an application programming interface (API).

## Key Benefits & Features



### Global Coverage

Access values anywhere on the globe! Our service is available 24-7



### Incredible Accuracy and Details

Based on elevation with an absolute vertical accuracy of up to 1m RMSE with pixel size of 1m (region dependent)



### One or Many Locations

Values can run on a single or batch of points



### Reliable and Proven

Used by customers worldwide across many industries



### Simple Web Application

Easy to use app, accessible over the web by any standard browser



### Integrate Into Your Business

Integrate values directly into your workflow using our APIs

**Visit [www.intermap.com](http://www.intermap.com)  
or call +1 (303) 708-0955  
for more information.**

Intermap Technologies® is an industry leader serving a diverse geospatial marketplace. We provide highly accurate geospatial information to help commercial enterprises and government agencies make better location-based decisions.

Copyright 2018. Intermap Technologies®.  
All Rights Reserved.

**INTERMAP.COM**

## Built on the foundation of NEXTMap

Values is generated from our highly accurate NEXTMap elevation models including NEXTMap 5 and World 10 data sets. Values was designed to provide specific information for only the locations that you need or to combine with visualization layers such as hillshade. Our NEXTMap database is frequently updated, providing you with the most current information.

## Low cost of ownership

Intermap's analytics services draw from a global database of over 500 million km<sup>2</sup> hosted in our secure cloud architecture. No need to pay for complicated data management system, processing, or acquisition costs. Intermap's Values product allows you to extract accurate information anywhere, for a fraction of the cost.

## Fast Results

Values provides information quickly – providing your users the information they need immediately.

## Flexible Access

Analytics are available via API, for integration into your application, or via a web application. Additional data sets, online tools, and analytics are also available to perform simple analyses from any web browser and enable better terrain-based decisions without the need for any GIS software.

## Specifications

Item	Specification
Data Type	Values
Locations	Up to 20 at a time
Absolute Vertical Accuracy	Up to 1m RMSE (1.65m LE90)*
Subscription	Pay as you go

\*Resolution and accuracy depend on region and data set selected

## Learn more

For more information about how you can benefit from Intermap's Values Analytics, please contact your Intermap representative or an Intermap business partner.



Example of Values used in infrastructure management (above) for updating assets information

**NEXTMap® Data Subscriptions are available now.  
Contact Intermap to access free demo datasets and analytics today!**