

**INTERMAP**
Answers Now™

Data Fusion Services

Hybrid Elevation Model

Wide Area Mapping Through Target Data Resolutions

Intermap's fusion services brings multiple elevation datasets, of differing resolutions and specifications, together into one homogeneous dataset. This allows management of resources and budgets by targeting high resolution data in high value areas such as cities, corridors and critical flood plains while providing wider area or rural coverage from a medium resolution IFSAR or low resolution NEXTMap 10. This is consistent with a long-term program strategy for managing elevation foundation data.

Key Benefits and Features

**Leverage NEXTMap Base Layer**

Benefit from Intermap's highly accurate homogeneous NEXTMap to create an optimally combined seamless dataset.

**Seamless Terrain Data**

Merge disparate datasets to fill in any gaps in your datasets for fully integrated mapping solutions.

**Nation Wide Mapping**

Target high value areas with LiDAR while benefitting from nationwide coverage with NEXTMap.

**Multiple Input Formats**

Let Intermap manage complexities associated with various projections, datums, resolutions and formats to create a homogeneous DEM.

**Hybrid Elevation Data**

Leverage higher accuracy and spatial detail in key areas such as cities, utility corridors and waterways.

**Cost-Effective Accuracy**

Optimize your project budget by using the highest resolution elevation data only where it is needed.

Data Fusion Process

Intermap's DEM Fusion service optimally combines elevation models from different sources into a seamless dataset. The service is based upon our accurate NEXTMap foundation data that is used to vertically align other DEMs of higher accuracy and spatial resolution to provide a consistent homogeneous dataset that enables precise 3D mapping applications. For example, DEM Fusion could utilize traditional aerial photogrammetric DEMs or LiDAR DEMs in urban areas and critical flood plains, while providing highly accurate NEXTMap IFSAR data everywhere else. The seamlessly fused hybrid product enables optimal combination of the data so that the higher accuracy data are focused to the key areas such as cities, utility corridors and waterways. Intermap's processes are designed to integrate and align multiple elevation data sources. This allows customers to optimize their project and budget by using the highest resolution elevation data only where it is needed.

Potential applications include:

- Watershed modeling
- Flood plain management
- Engineering and infrastructure planning
- Risk management
- Telecommunications planning
- Natural resource exploration, development, and management
- National security and defense
- Emergency response
- And more



Intermap's DEM Fusion engine used to create seamless combined elevation model over Arizona neighborhood – optimal combination of NEXTMap and LiDAR

INTERMAP

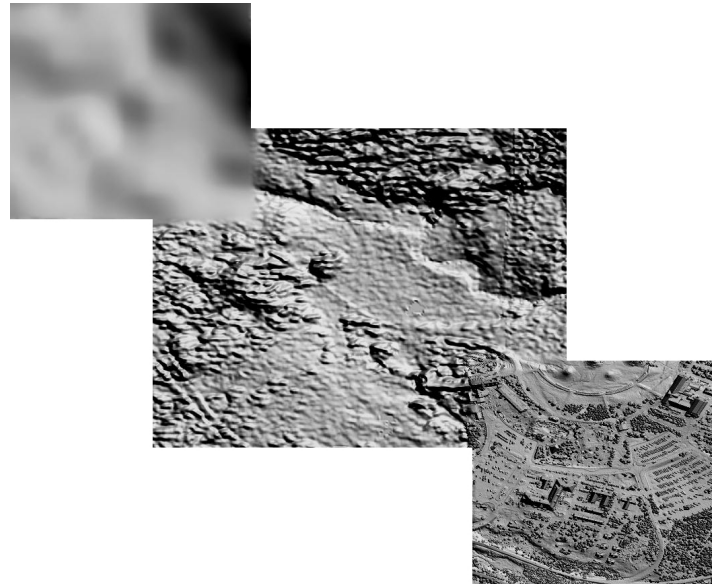
Answers Now™

**Visit www.intermap.com
or call +1 (303) 708-0955
for more information.**

Intermap Technologies® is an industry leader serving a diverse geospatial marketplace. We provide highly accurate geospatial information to help commercial enterprises and government agencies make better location-based decisions.

Copyright 2018. Intermap Technologies®.
All Rights Reserved.

INTERMAP.COM



Intermap's DEM Fusion service optimally combines elevation models from different sources and resolutions into a seamless dataset.