



# NEXTMap® Global Solutions

## Data and Analytics

### Quick Access to Foundation Data & Derivatives

NEXTMap Global Solutions provide immediate access to our NEXTMap products, services, and online tools to help you save time, money, and resources. Our servers store DSM and DTM datasets which can be accessed through API calls, web browsers, desktop software, and partner applications. Since all the data is hosted on the cloud, and not on a local computer or server, there is no need to store, manage, or disseminate data yourself. Our NEXTMap foundation datasets are continually updated to provide a "living DEM." By offering our NEXTMap products and services via NEXTMap Global Solutions, you get instant access in a standard format and at pricing that is unrivaled in the industry.

### Key Benefits and Features



#### Continually Updated

Our "living DEM" provides access to the most current data across the globe



#### Elevation Analysis as a Service

Variety of tools and access gives everyone the ability to perform elevation analysis



#### Cloud-based Data

High-speed access to secure, cloud-based data, and analytics



#### Accessible Across the Globe

Our data can be accessed through existing GIS software and API calls



#### Customized Tools

Custom tools can be developed to suit individual customer needs



#### Custom Integration

API and SDKs available for app and software development



## OGC-based Services

NEXTMap Global Solutions use the Open Geospatial Consortium (OGC) standards for geospatial content and services, GIS data processing, and data sharing. Get access to our data products from within GIS software such as ESRI, Global Mapper, ERDAS, QGIS, and other OGC-compliant software suites. Our terrain analysis services allow you to carry out near real-time analysis on our data products online. Direct API calls can be used to employ tools such as Get\_height, Get\_profile, and Get\_viewshed or custom tools as required.

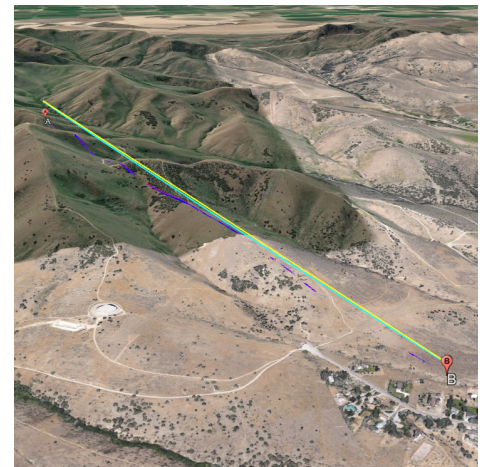
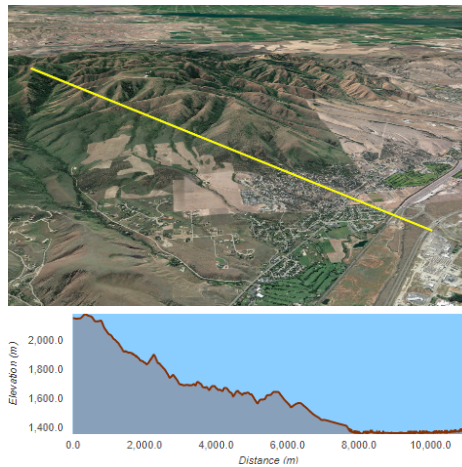
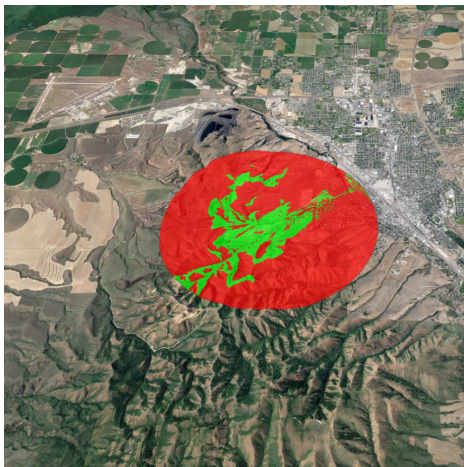
We also provide the following OGC-compliant services:

- Web Map Service (WMS): a service used for visualization of data layers
- Web Coverage Service (WCS): used for downloading datasets to use in detailed analysis and modelling
- Web Map Tile Service (WMTS): used to provide georeferenced map tiles through our server
- Web Feature Service (WFS): a service that supports map objects such as shape files and metadata

## Accessing Data & Analytics

There are three ways to access Intermap's DEMs, visualization and vector layer data, and analytics through NEXTMap Global Solutions:

1. Web Applications: InsitePro®, NEXTWave™, Values, Link Profile, Profile, Viewshed, and RF Viewshed.
2. Desktop Software: Access to our data through desktop software using OGC standards-based service calls from your software to our data.
3. Partner Application or Web Interface: Partners have access to our API and SDKs. This means that they can easily access our data from applications that they build or by using pre defined SDKs.



▲ Examples of viewshed analysis (left), terrain profile (middle), and link profile (right) analytics using NEXTMap Global Solutions



Visit [www.intermap.com](http://www.intermap.com)  
or call +1 (303) 708-0955  
for more information.

Intermap Technologies is an industry leader serving a diverse geospatial marketplace. We provide highly accurate geospatial information to help commercial enterprises and government agencies make better location-based decisions.

Copyright 2020. Intermap Technologies®  
All Rights Reserved.

[INTERMAP.COM](http://INTERMAP.COM)



Your World. Made Simple.