



NEXTWave™ Rail

Tree Risk Management

Tree Encroachment Risk for Railways

Railroads span entire continents, covering every type of terrain. Thousands of miles of tracks go through forests with the trees less than 40 feet away from the rails. Railroads need to be aware of trees encroaching on the lines, whether they are leaning into the trains path, likely to fall on the tracks, or going to drop wet leaves that cause expensive delays. The key to risk management is understanding the risk. With rail networks spread over entire continents, it can be challenging to gather and organize all the necessary data. GIS departments face challenges regarding risk analysis because high-quality data is expensive to obtain.

Now, Intermap Technologies offers [NEXTWave Rail](#), a risk management solution for tree encroachment created specifically for railway operators. Risk managers can evaluate the risk of tree-related delays and accidents cross entire rail networks by accessing high-acuity tree data and analytics fused from multiple sources of information. Better risk management enables improved risk mitigation and more effective disaster response.

Key Benefits and Features



Subscribe to Services

Access Intermap's industry-leading geospatial datasets and analytics with NEXTWave's subscription packages



Integrate with an API

Integrate risk analytics directly into existing workflows using NEXTWave's API and web services capabilities



Leverage Decades of Expertise

Leverage risk expertise developed over decades of working with global insurance companies



Customize Solutions

Customize solutions to include entire rail networks and necessary supporting data to ensure the best solution possible

Detect Tree Encroachment

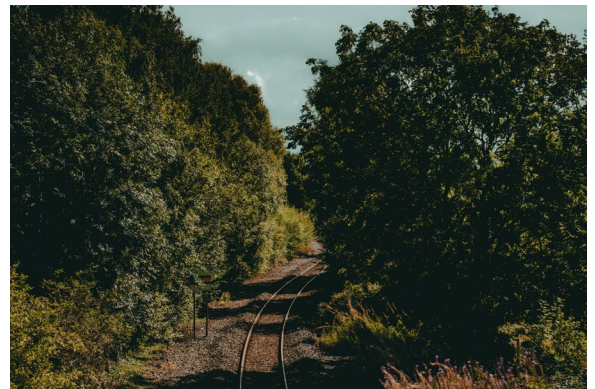
Although most trains are equipped with sensors to detect trees encroaching on the tracks, operation teams need to be aware of potential tree problems throughout the network. NEXTWave Rail delivers highly accurate locations where trees are encroaching on the rail corridor. Managing tree encroachment with a customized software suite that leverages continually updated satellite information to detect trees near the rails has until recently been prohibitively expensive, but now NEXTWave puts that power in the hands of even a small operations team.



NEXTWave Rail includes tree encroachment information along an entire rail corridor. ▲

Risk Mitigation Pays for Itself

Tree debris is responsible for delays all over the world, costing the railway industry hundreds of millions of dollars each year. However, trees are integral parts of local ecosystems and they can't be cleared completely away from railways. In many cases, trains travel through protected areas or parks where cutting trees is heavily regulated. Risk managers need the necessary information, including tree types and regular monitoring for encroachment into the rail corridors, to prevent delays or damage to locomotives. NEXTWave Rail delivers information directly, supporting immediate mitigation decisions, without the expensive purchase of multiple datasets that require intensive integration and quickly become obsolete.



Use NEXTWave Rail to determine track locations vulnerable to tree encroachment. ▲

Protecting Railways Is Essential

Trees are the leading cause of rail delays globally. With NEXTWave Rail's tree encroachment analytics, risk managers can identify high-priority segments of track where mitigation is most urgent. Risk managers now can efficiently and economically access the data and analytics they need to protect their rail networks.



Visit www.intermap.com
or call +1 (303) 708-0955
for more information.

Intermap Technologies is an industry leader serving a diverse geospatial marketplace. We provide highly accurate geospatial information to help commercial enterprises and government agencies make better location-based decisions.

Copyright 2021. Intermap Technologies®
All Rights Reserved.

INTERMAP.COM



Your World. Made Simple.