

**INTERMAP**  
Answers Now™

# NEXTMap 5

Powerful Elevation Data

## Comprehensive 3D Coverage

The high-resolution NEXTMap 5 database from Intermap Technologies® provides seamless, wide-area digital elevation data and images. Take advantage of the largest commercial airborne survey in the world, as NEXTMap 5 was collected using IFSAR technology and fully ground controlled and processed using advanced stereo technology. The result is a uniform 5m posted digital surface model (DSM), 5m posted digital terrain model (DTM), and up to 50cm orthorectified imagery (ORI), NEXTMap provides incredible accuracy at an economical price and is ideal for everything from engineering and infrastructure to regional and national mapping.

## Key Benefits & Features



### 15M km<sup>2</sup> Coverage

NEXTMap 5 is available in over 40 countries from airborne data collection.



### Surface and Bare Earth Model

NEXTMap 5 includes a fully qualified DSM and DTM.



### Advanced IFSAR Technology

IFSAR penetrate clouds, smoke, and haze for sharp, cloud-free data.



### Incredible Accuracy

Detailed elevation details with an absolute vertical accuracy of 1m RMSE\*.



### Hydro Enforced

Accurate coastlines, flattened water bodies, detailed drainages and monotonic flow.



### Reliable and Proven

Used by thousands of customers worldwide across many industries.

## Reliable and Proven

Intermap's NEXTMap 5 products have been delivered to thousands of customers and utilized in countless applications around the world. Clients range from large government agencies and Fortune 500 companies to small businesses and academics. Whatever the application, Intermap's team is dedicated to help.

## Highest Quality Standards

NEXTMap 5 was collected using a fleet of Intermap's airborne IFSAR platforms. Because IFSAR technology is unaffected by clouds and weather, Intermap ensures the product is void free and seamless. Intermap utilizes advanced 3D stereo editing to ensure accurate hydro enforcement and to digitally identify and remove surface features to create both an accurate DSM and DTM. All our data products are backed by quality-controlled processes in collection and production. It includes tens of thousands of ground control points to ensure our product meets the accuracy specifications required.

| Item                  | Specification                       |
|-----------------------|-------------------------------------|
| Data Type             | DSM & DTM (float)<br>ORI (image)    |
| Data coverage         | 15m km <sup>2</sup> (40+ countries) |
| Resolution*           | 5m posted (DSM / DTM)<br>50cm (ORI) |
| Abs Vertical Accuracy | 1m RMSE (1.65m LE90)<br>(DSM / DTM) |

\*As measured in unobstructed regions with slopes less than 10 degrees. Actual specification may be region dependent.

**INTERMAP**

Answers Now™

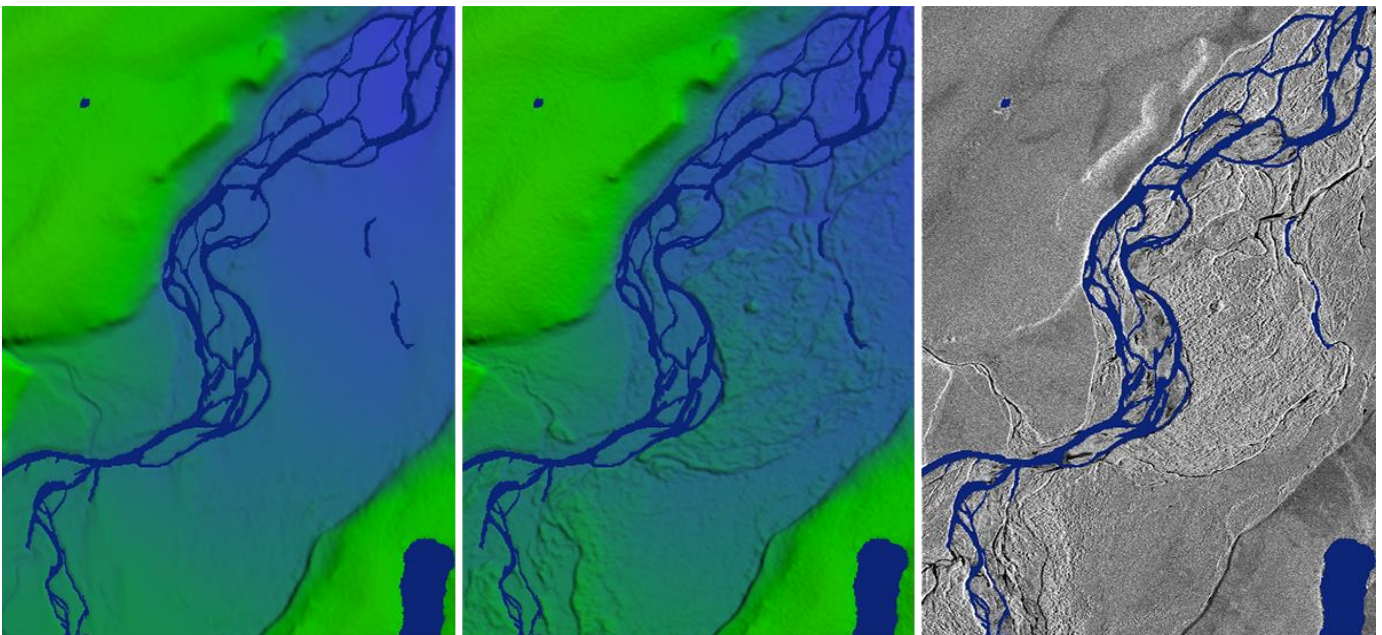
Visit [www.intermap.com](http://www.intermap.com)  
or call +1 (303) 708-0955  
for more information.

Intermap Technologies® is an industry leader serving a diverse geospatial marketplace. We provide highly accurate geospatial information to help commercial enterprises and government agencies make better location-based decisions.

Copyright 2018, Intermap Technologies®.  
All Rights Reserved.

[INTERMAP.COM](http://INTERMAP.COM)

Left to right: the NEXTMap 5 Digital Terrain Model (DTM), Digital Surface model (DSM), and Orthorectified Radar Imager (ORI.)



NEXTMap® 5 Data Subscriptions are available now. Contact Intermap to access free demo datasets and analytics today!