

**INTERMAP**  
Answers Now™

**NEXTMap**

World 10

## Accurate and Comprehensive Worldwide Elevation Data

NEXTMap World 10 is Intermap's 2nd generation global digital elevation models (DEM) featuring a 10-meter ground sampling distance (GSD). World 10 is available as both a digital surface model (DSM) with surface features such as trees and buildings or as a digital terrain model (DTM) of the bare earth. World 10 is designed as a cost-effective solution for applications where a reliable and consistent global coverage is needed. Perfect for a diverse range of applications across many industries including navigation, agriculture, telecommunication, energy, defense, military, and government services.

## Key Benefits & Features



### Worldwide Coverage

100% inclusion of the Earth's entire 150 million square kilometers.



### Surface and Bare Earth Model

World 10 includes a fully qualified DSM and DTM.



### Enhanced Polar Regions

Polar regions coastlines and terrain are more accurately defined.



### Consistent Global Accuracy

Seamless with an absolute vertical accuracy of 10m LE95.



### Hydro Enforced

Water bodies & coastlines are flattened and corrected for accurate measurement.



### Enhanced Spatial Detail

World 10 is posted at 10m and contains details not visible in other global data sets.

## Detailed Global Data

World 10, Intermap's second generation global data set, was built using advanced proprietary technology that not only corrects, aligns, and filters, but also enhances and fuses terrain features. World 10 combines the best features from multiple sources including satellite, airborne, and ground points to produce a single seamless product. Any errors, voids, or gaps have been systematically corrected.

## High Accuracy

Data is fully hydro enforced and includes flattening of water bodies and adjustments to be consistent globally. Coastal definitions have been enhanced and polar regions sharpened. Surface features such as trees and buildings have been digitally removed using advanced 3D stereo editing to produce bare earth surface. The entire data set is corrected with complex 3D modelling using millions of independent control points from sources such as ICESat, Ground Control, and airborne collection. The result is the highest quality global DSM and DTM available at this price point.

Item	Specification
Data Type	DSM (float)
Data coverage	Complete Global Coverage
Resolution	1/3 arc second (~10 m)
Abs Vertical Accuracy	10m LE95 / 8m LE90
Projection	Geographic / WGS84
Geoid	EGM96
Units	Meters

**INTERMAP**

Answers Now™

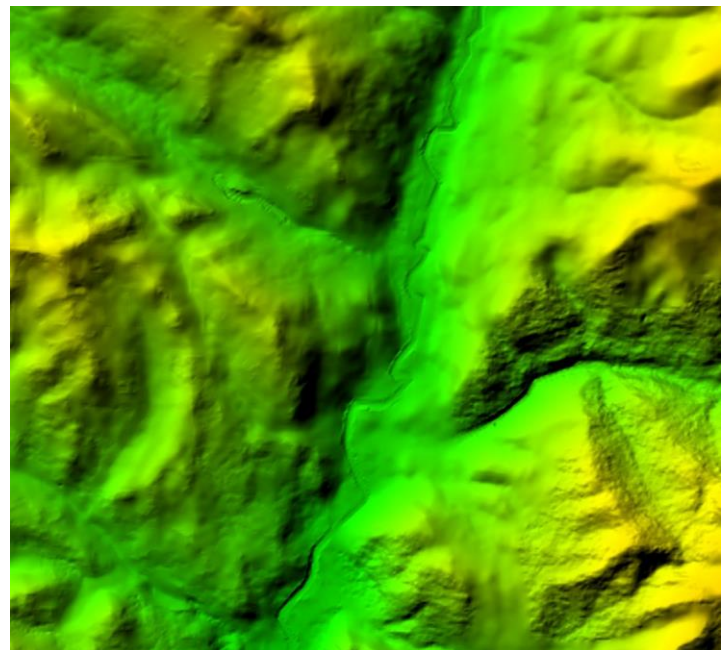
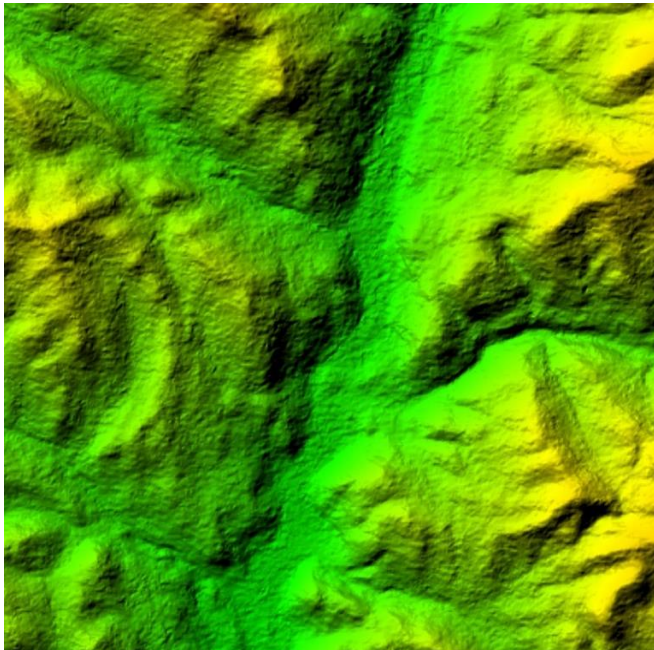
Visit [www.intermap.com](http://www.intermap.com)  
or call +1 (303) 708-0955  
for more information.

Intermap Technologies® is an industry leader serving a diverse geospatial marketplace. We provide highly accurate geospatial information to help commercial enterprises and government agencies make better location-based decisions.

Copyright 2018, Intermap Technologies®.  
All Rights Reserved.

INTERMAP.COM

*NEXTMap World 10 DSM (left)  
surface features visible such as trees  
and forest have been removed in the  
NEXTMap World 10 DTM (right)*



NEXTMap® Data Subscriptions are available now. Contact Intermap to access free demo datasets and analytics today!