



Leading Provider of Geospatial Solutions

July 2022

PROPRIETARY – DO NOT SHARE OR REPRODUCE
Based on publicly available information

Your World. Made Simple.

Intermap Reader Advisory



Certain information provided in this presentation, including projected financial information, constitutes forward-looking statements. The words "anticipate", "expect", "project", "estimate", "forecast", "will be", "will consider", "intends" and similar expressions are intended to identify such forward-looking statements. Although Intermap believes that these statements are based on information and assumptions which are current, reasonable and complete, these statements are necessarily subject to a variety of known and unknown risks and uncertainties. Intermap's forward-looking statements are subject to risks and uncertainties pertaining to, among other things, COVID-19 and its impact on both the Company's business and operations and those of its customers, cash available to fund operations, availability of capital, revenue fluctuations, nature of government contracts, economic conditions, loss of key customers, retention and availability of executive talent, competing technologies, common share price volatility, loss of proprietary information, software functionality, internet and system infrastructure functionality, information technology security, breakdown of strategic alliances, and international and political considerations, as well as those risks and uncertainties discussed Intermap's Annual Information Form and other securities filings. While the Company makes these forward-looking statements in good faith, should one or more of these risks or uncertainties materialize, or should underlying assumptions prove incorrect, actual results may vary significantly from those expected. Accordingly, no assurances can be given that any of the events anticipated by the forward-looking statements will transpire or occur, or if any of them do so, what benefits that the Company will derive therefrom. All subsequent forward-looking statements, whether written or oral, attributable to Intermap or persons acting on its behalf are expressly qualified in their entirety by these cautionary statements. The forward-looking statements contained in this presentation are made as at the date of this presentation and the Company does not undertake any obligation to update publicly or to revise any of the forward-looking statements made herein, whether as a result of new information, future events or otherwise, except as may be required by applicable securities law.

All dollar figures presented in this presentation are in US dollars.



Overview



Intermap is a geospatial data company at the heart of several markets experiencing high growth. The Company has patented technology, a proprietary data library and innovative software. Intermap is a world leader in producing 3D elevation models, used by governments and businesses to understand their terrain environment.

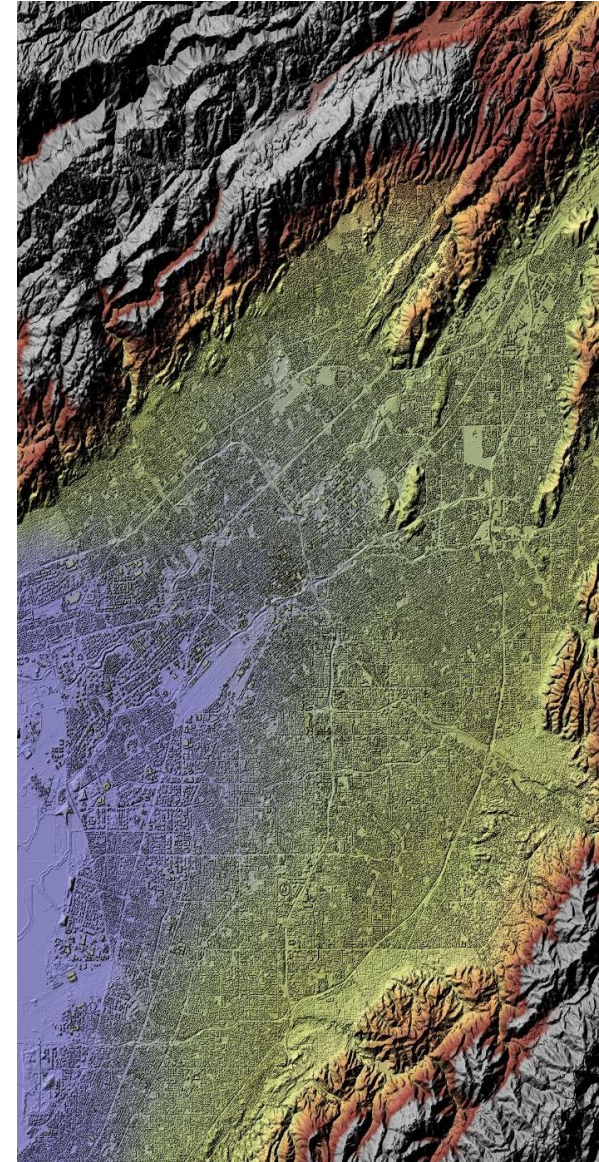
The Company has a long history of collecting, processing, analyzing and delivering 3D terrain data, from all sources, that answer questions and solve problems with speed, accuracy, recency, and global scale, made simple for customers to use.

Governments rely on Intermap's patented technology to deliver situational awareness in extreme environments where there are significant weather hazards, event risk, and insufficient models.

Our space technology is being utilized and leveraged by a variety of industry providers, including orthorectification, altimetry validation, and automated feature extraction.

EASA recently awarded global certification to Intermap and its exclusive partner, Lufthansa Systems, to deliver NEXTView™, the world's first and only 3D terrain dataset for aviation. This will dramatically improve avionics systems used by airline pilots and drone operators for navigation, terrain warning systems, and flight planning.

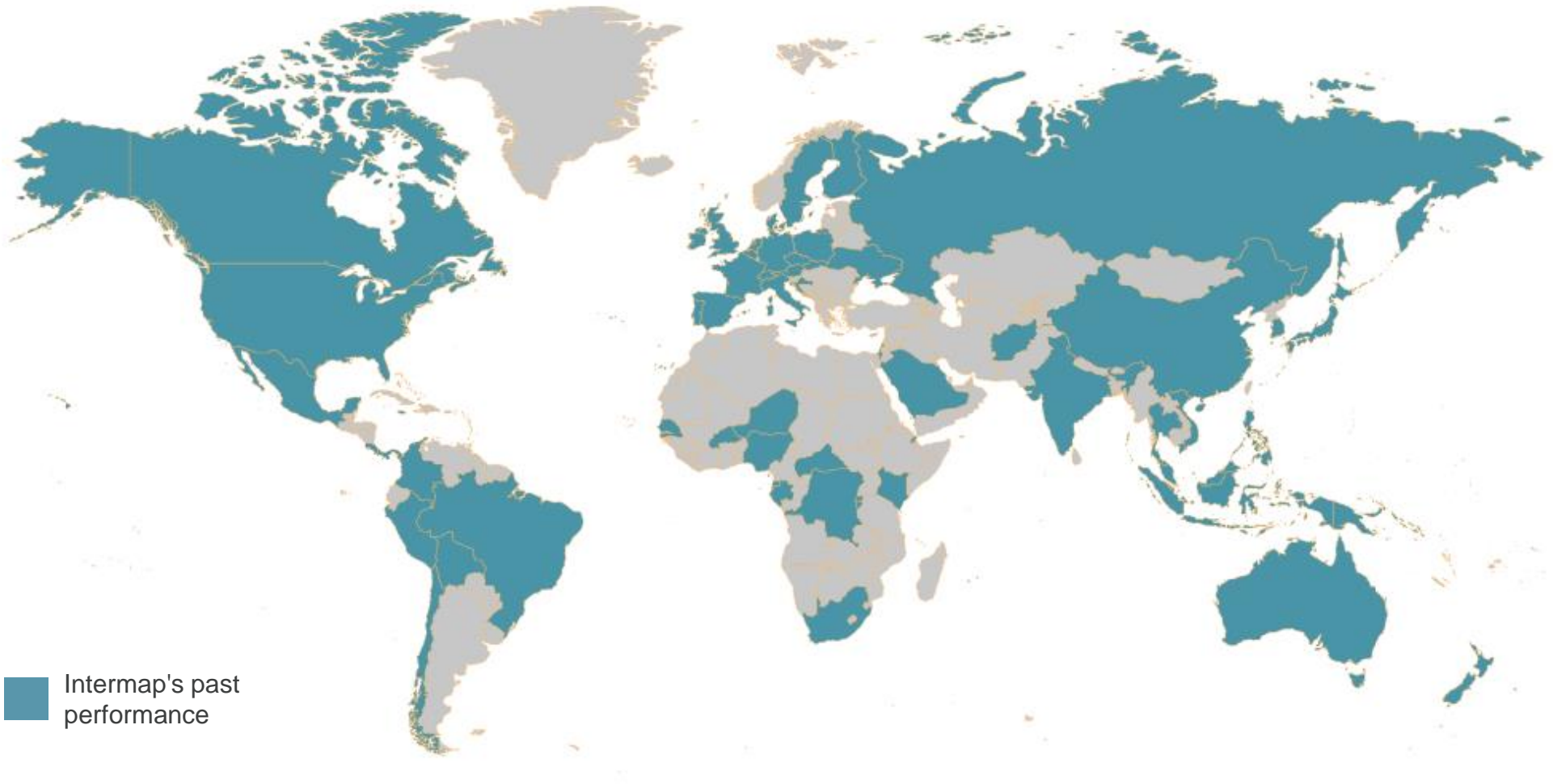
Commercial uses of Intermap's 3D data and models include flood and wildfire risk modelling for insurance underwriting, telecommunications network planning, and railway corridor risk management.



Global Experience and Leadership



Intermap's past performance includes operations in 61 countries



Government Solutions



Intermap has a long history of government contract work. The Company has helped over 48 national governments on every continent around the world build critical geospatial infrastructure, allowing partners to make critical planning decisions affecting resource allocation, transportation, power management, environmental monitoring, topographic mapping, disaster mitigation, smart city integration, public safety, and defense.

Intermap's Processing, Exploitation, and Delivery services include:

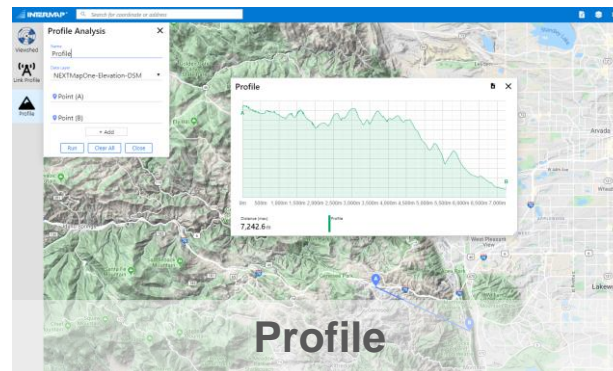
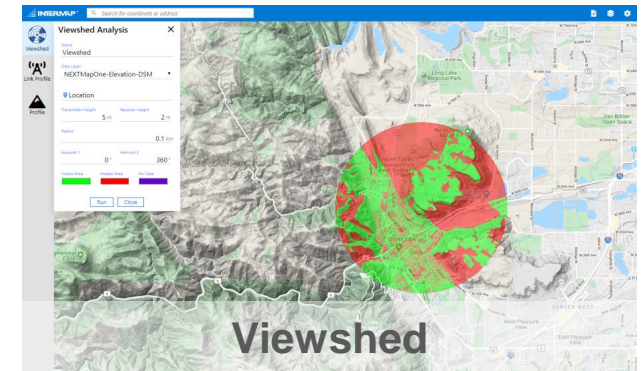
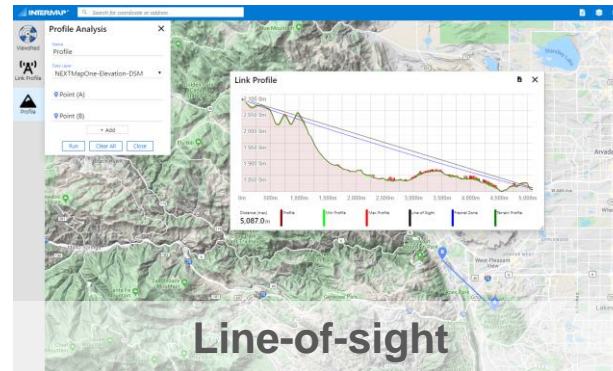
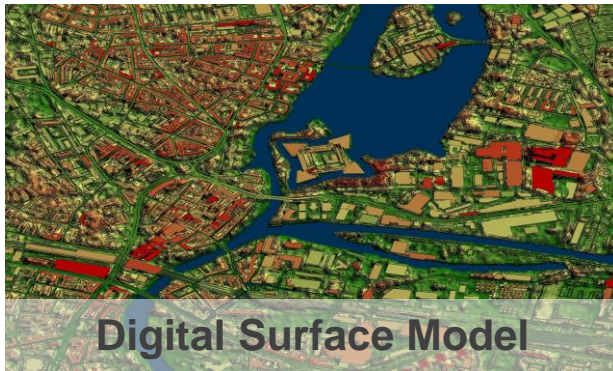
- Construction of national topographic base maps, thematic maps and contour maps
- Extraction of feature data, change detection and maintenance and management programs
- Geospatial audit, maintenance, and training
- Special mission data collection, intelligence, surveillance, and reconnaissance
- Full data fusion with our sensor agnostic approach to data collection and integration
- Maximize information extraction from data with our patented IRIS technology
- Worldwide 6m 3D DEM available off-the-shelf
- Related applications, services, and solutions to make terrain data information accessible
- Standard OGC solutions delivered through cloud software solutions



Commercial Solutions

Intermap's globally available commercial solutions are based on our proprietary NEXTMap® elevation datasets. Commercial applications of Intermap's 3D data and models include:

- Flood and wildfire risk modelling for insurance underwriting
- Aviation applications, such as synthetic vision systems, UAV flight operations, and UTM flight planning
- Telecommunications network planning
- Railway corridor risk management
- Renewable energy site planning and management
- Satellite imagery geometric correction (orthorectification), altimetry validation, feature extraction



Century of Innovation

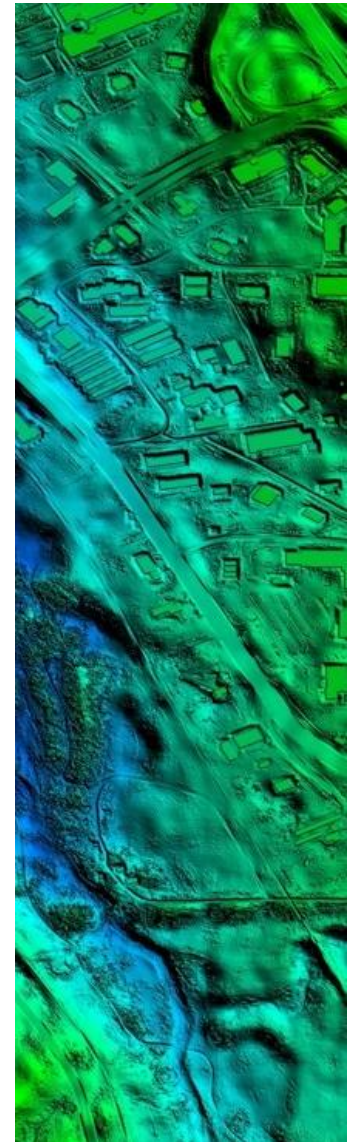
- 1919** Intermap's founding company, Pennsylvania Aero Service Corporation, became the first aerial survey company in North America
Aero collected the first aerial imagery of Pennsylvania using an aircraft
- 1932** Aero became the first company to collect aerial imagery for an entire state
- 1961** Aero Service Corporation was acquired by Litton Industries to become a mapping and survey division of Litton
- 1974** Aero Service Corporation merged with Western Geophysical Company of America, another division of Litton, where it was dedicated to the creation of maps and aeriels and aerial surveys
- 1977** Intera acquired Western Geophysical Company's remote sensing group
- 1996** Intera split into three groups: Intera Environmental, Schlumberger (acquired the petroleum portion), and Intermap (remote sensing group)
Acquired the world's most advanced terrain data collection system from DARPA
- 1997** Intermap became a listed company, focusing on acquiring companies involved in remote sensing
- 2000** NASA awarded a contract to map Earth in 3D for Space Shuttle (prime on SRTM)
- 2002** Acquired Aerosensing multi-sensor capability (Munich), adding sensor design/fabrication
- 2003** Acquired 3D software development capability through Multimedia Corp (Prague)
- 2004** Completed first national 3D mapping program (UK)
- 2005** Developed first L-band canopy penetration sensor



Century of Innovation



- 2007** Pioneered 3D geospatial Web services and cloud data access
- 2009** Completed first 3D map of USA – 8 million km²
- 2012** Completed NEXTMap World30, world's first global, seamless 3D digital elevation model
- 2016** Launched InsitePro – online application for insurance
- 2017** Launched the highest bandwidth multi-sensor commercial terrain data collection system
- 2018** Released NEXTMap One™ 1-meter global dataset, and NEXTView™ aviation product with Lufthansa Systems
Obtained patent for FloodScope™ global flood model and patent for IRIS™ data-fusion engine
- 2019** Launched telecom suite, NEXTMap Orthorectification Service, drone-aviation product suite
- 2020** NEXTView becomes the first certified surface dataset for aviation, boosting safety and efficiency
Launched NEXTWave® Analytics for telecom and railway applications
Signed 25th InsitePro subscription
- 2021** Filed provisional patent application for P-band convergence
Launched automated feature extraction capabilities and space imagery validation service
Upgraded sensors to collect 25cm ORI



Why Invest in Intermap?



- Our next generation foundation maps are making the world better, more accessible, safer, more efficient and well understood
- We are helping to mitigate losses from natural disasters like floods and fires by delivering decision-critical analytics to insurers so property owners can have the right coverage in place
- We are helping to anticipate and model changes in climate and geography. Our global-scale capabilities are unmatched, especially in a crisis, which was evident when Intermap helped rescue youth soccer players stuck in a cave in Thailand
- We are improving safety of navigation for helicopters, drones and the commercial cockpit, which in turn is making autonomous drone deliveries a reality. In Africa today, people are receiving urgent medical deliveries, which would not be possible without Intermap
- We are helping to protect our military and public servants overseas, and helping local partners use advanced technology to make the world safer from natural disasters, better managed and protected in terms of their natural resources, and more accessible for trade by delivering foundation datasets and services to ensure national-level mapping can support development and thriving economies



Horizontally Integrated Product Offering

Intermap Builds and Delivers the World's Best 3D DEMs



Source Appropriate Data

- Intermap collects proprietary foundation data covering the globe in 3D
- Sensor expertise to collect most appropriate data available to achieve requirements
- Use multisource data or deploy proprietary sensors as needed
- Intermap's remote sensing capabilities are military-grade



Build Customizable 3D DEMs

- NEXTMap® is the world's largest, high-resolution, commercial 3D DEM, gold copy posted at 1m
- New data is enriched and fused with NEXTMap using patented algorithms and automated IRIS processing
- High-resolution, seamless, precise 3D data can be built to address any 3D+ geospatial requirements on a global scale



Deliver 3D Solutions Quickly

- Deliver 3D DEMs as a service to solve specific problems
- Delivered fast and accurately, as software or solutions
- Customized for government base maps, aviation and drones, insurance, telecom, railway and satellite images
- Elevation data as a service (EDaaS) APIs integrate with existing software and workflow

We make the process simple and useful by reducing latency in the supply chain, from 3D point/pixel creation to generating answers



Foundation GEOINT Data Products and Services

Intermap provides global solutions for Land, Air, Sea, and Space

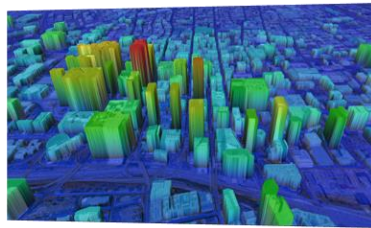


Navigating the world in high detail



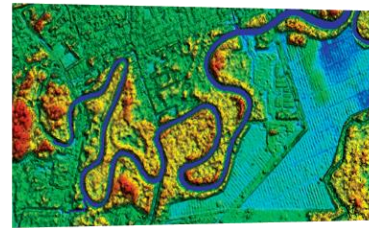
Elevation Data

Over 310 million square kilometers of elevation data in global library



Land Features

Datasets contain billions of topographic features



Water

Fully hydro-enforced elevation data
Shoreline and ice monitoring and mapping



Air

Over five million kilometers inflight collecting data for countrywide mapping missions



Space

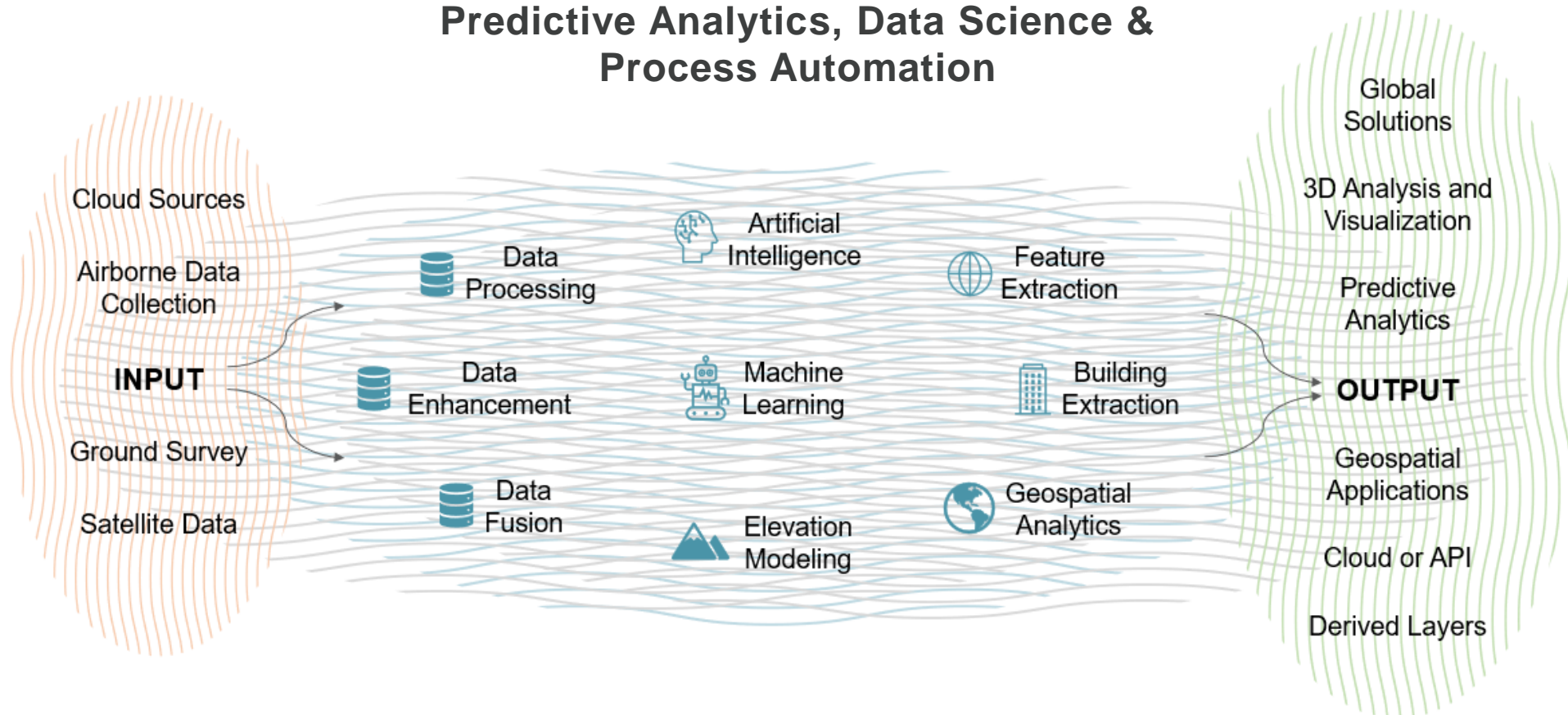
Patent-pending satellite altimetry data validation service
Better orthorectification and ground station monitoring

Producing Unmatched Solutions from All Sources

Leveraging patented, proprietary technology

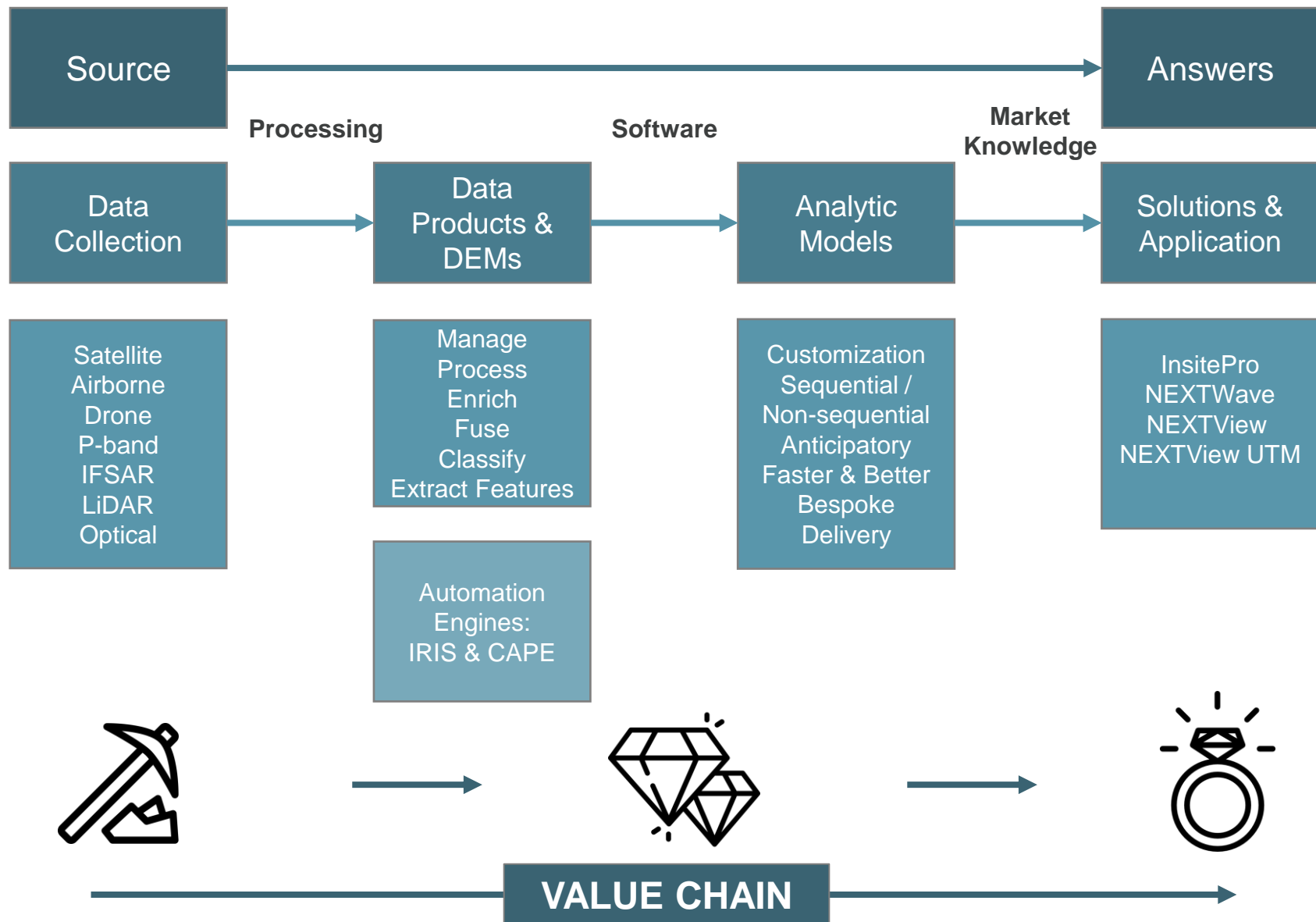


Predictive Analytics, Data Science & Process Automation



Move Up the Value Chain

Non-experts in particular want to use data. They are asking to buy diamond rings.



Major Government Wins



National Geospatial-Intelligence Agency (NGA) Low Latency Foundation Data

- Received an Other Transactions Award from NGA to deliver low latency foundation data. The Company is partnering with the prime contractor, CACI, Inc. – Federal, to combine Intermap's patented IRIS™ processing suite with CACI's Feature Trace automated feature extraction software to create new elevation and feature datasets that are continually updated as the terrain and built environment evolve

Malaysian Government Mapping Project

- Malaysia's federal mapping agency selected Intermap to map the island of Borneo, the largest island in Asia and the third largest in the world
- Intermap will use its proprietary sensor technology to collect airborne IFSAR imagery and create 3D digital elevation models and 3D-derivative feature products to build authoritative base maps for the island

U.S. Air Force - Air Force Research Laboratory (AFRL)

- Prime contract to support development of aviation solutions for GPS-denied environments
- Intermap will leverage its unique commercial capabilities and experience to help the Air Force achieve desired effects where alternative navigation methods are required. The Company will work with AFRL to help them advance the next generation of navigation systems supporting multidomain operations, long-range precision fires, force protection and maneuver

Colombian National Mapping Project

- Selected by the government of Colombia to create authoritative elevation data for its national mapping agency
- Working in partnership with Grupo GeoSpatial S.A.S. ("GeoSpatial"), Intermap is proud to support Colombia's national mapping program with high-resolution NEXTMap DTMs covering 62 high-priority municipalities

NEXTMap One LiDAR Fusion in Dominica

- Intermap teamed with McElhanney Consulting Services Ltd. to provide NEXTMap One data to fill in areas on the island of Dominica where LiDAR data was difficult to collect
- This initiative is part of the Disaster Vulnerability Reduction Project set out by the Government of Dominica through the Ministry of Health and Environment



Government Contracting Vehicles



Intermap is actively working on these government contract vehicles

Contract	Prime Partner(s)
JANUS Geography	CACI
USGS GPSC4	Dewberry
NOAA Coastal Shoreline Mapping	Dewberry
GSA Schedule	Carahsoft, Woolpert
NAVSUP-WEXMAC	Horizon Strategies



Subscription and Licensing Revenue



Intermap has transitioned many accounts to recurring subscription over the past 24 months

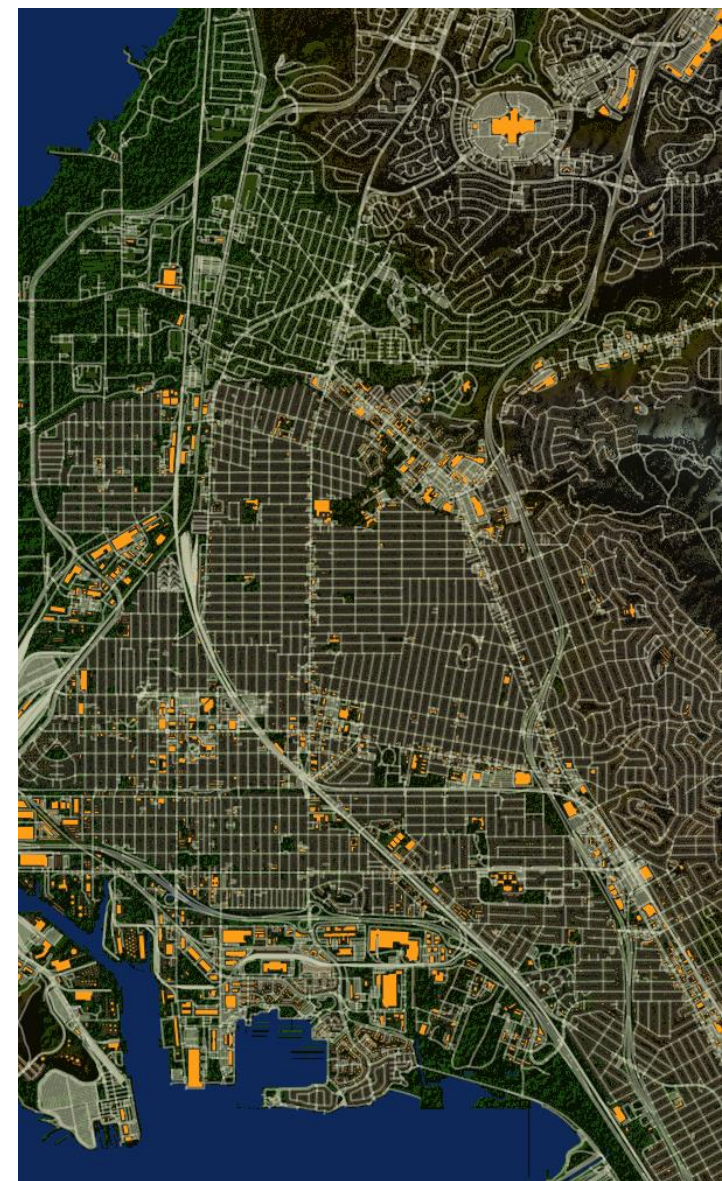
- Three years ago, Intermap commenced the process of transitioning existing accounts to recurring revenue models
- The average account size of recurring solution and software is growing
- The average contract duration has more than doubled in the past 24 months

Lufthansa Partnership for Aviation Market

- Brought to market the world's first certified, high-resolution, global geospatial terrain dataset, called NEXTView™
- In three months, Intermap completed NEXTView for over 75 countries
- With certification (EASA Type 1), NEXTView will revolutionize safety and efficiency for a variety of aviation markets, including avionics and unmanned aerial vehicles

Rise Broadband: Telecommunications

- Signed contract with Rise Broadband, Inc for NEXTMap One™ based telecom analytics for microwave link planning and network planning
- Rise Broadband is the largest residential fixed wireless broadband provider in the United States



Subscription and Licensing Revenue



Drone Delivery: High-resolution terrain awareness for UAV navigation

- Integrating NEXTView with UTM and UAS systems with customers such as DronSystems, Wingcopter and IDRONECT
- Intermap will deliver NEXTView terrain dataset to improve flight efficiency, navigation and safety

Terrain Data for Garmin Golf™ Application

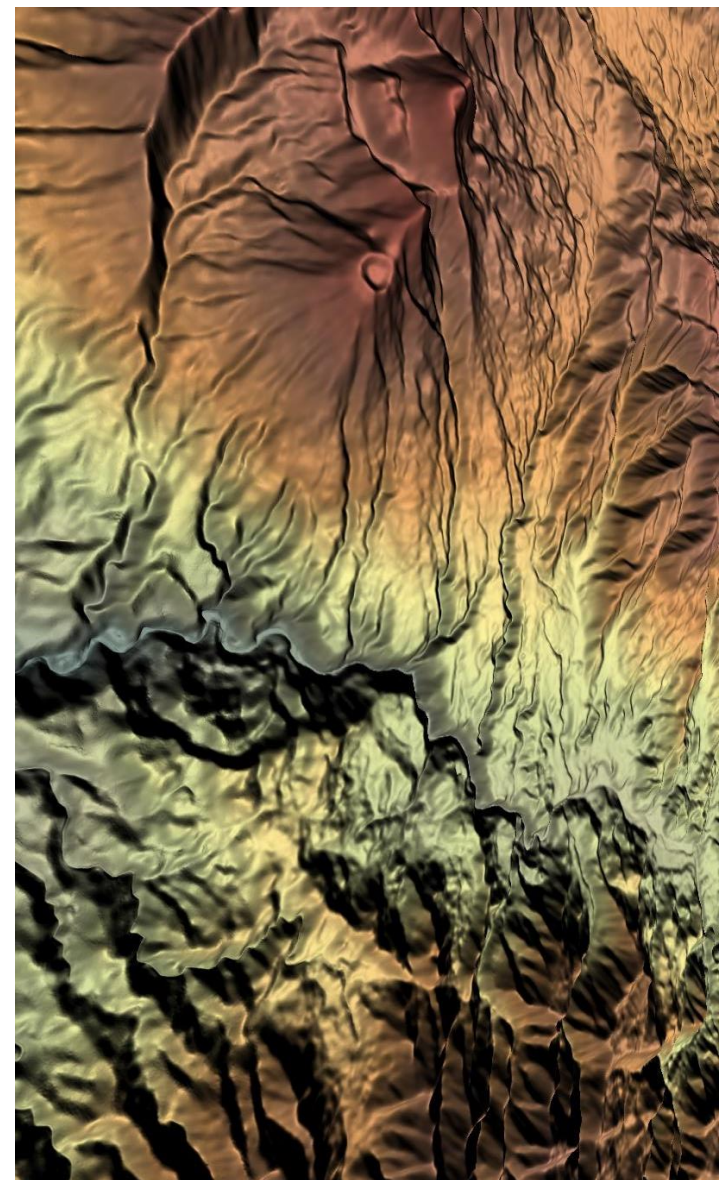
- Signed a contract to provide 6m DTM for over 40,000 globally distributed golf courses to support golf companion app
- Initial contract is 3 years with annual minimums and royalties based on subscription usage

Annual Subscriptions from top insurance companies for InsitePro®

- A top-5 U.S. property and casualty insurer signed a three-year subscription to InsitePro
- Annual subscriptions for data and analytics provided for insurance underwriting applications with dozens of customers
- InsitePro's Monthly Recurring Revenue (MRR) grew by over 30% since the end of 2020

Entered strategic agreement with TATA Communications

- Supporting expansion of its 5G wireless telecommunications network in select Indian cities



Data Collection: Proprietary Platform Advantage



Fast data collection

- Commercial Learjet-36 is capable of fast data collection, including foliage penetration at high altitudes

Complete tactical awareness

- Complete situational awareness with multi-sensor technology capable of 25cm resolution

All-weather acquisition

- Guaranteed imagery in any weather condition, regardless of smoke or clouds

State-of-the-art technology

- Most advanced commercial RADAR platform
- Integrates with all-source data using our IRIS™ fusion engine

Wide-area coverage

- Large mapping footprint sees objects over a 25km swath

Under-foliage penetration

- Reveal information under triple canopy, such as infrastructure



Collection Capabilities

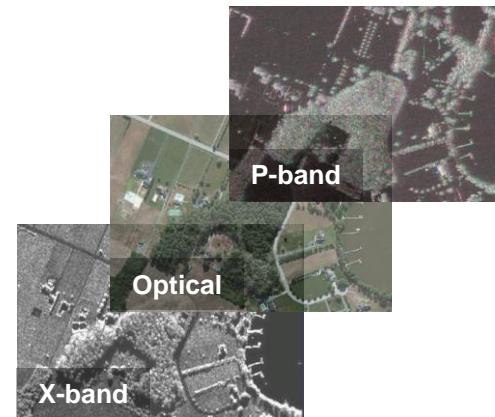


FOPEN is a critical requirement in multiple AORs

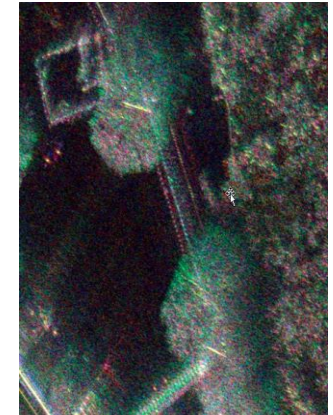
Intermap delivers FOPEN in multi-sensor configuration

- Multi-frequency X/P-band SAR
- Automated object detection with 24-hour tip and cue
- High-resolution 3D DEMs (mapping)

Single Sensor Images



Composite Sensor Image



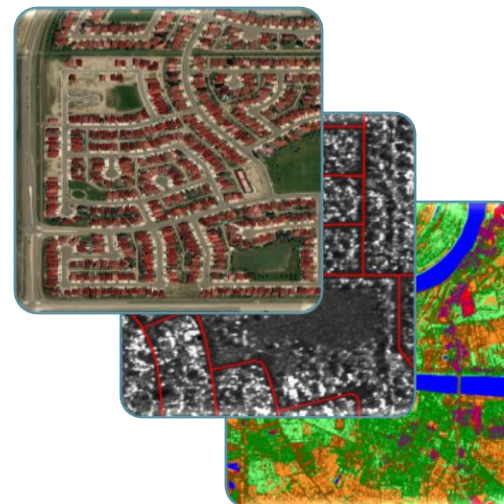
Rapid processing, exploitation, and dissemination

- As a service or COTs delivery
- Analytical overlays for SIGINT

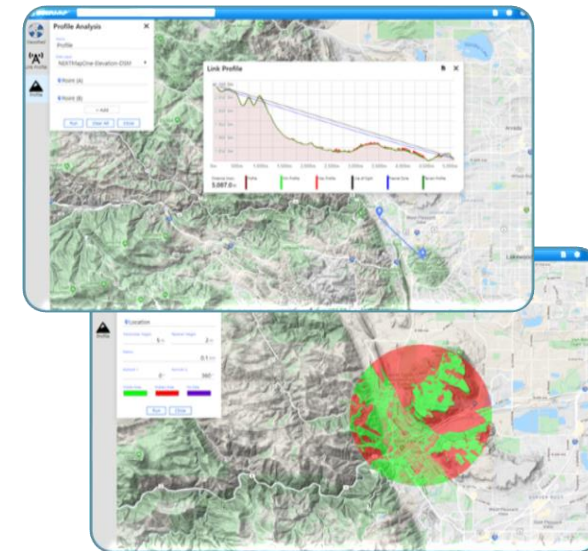
Operational past performance in austere environments

- Afghanistan
- Colombia
- Philippines
- Congo

Feature Extraction



Disseminate



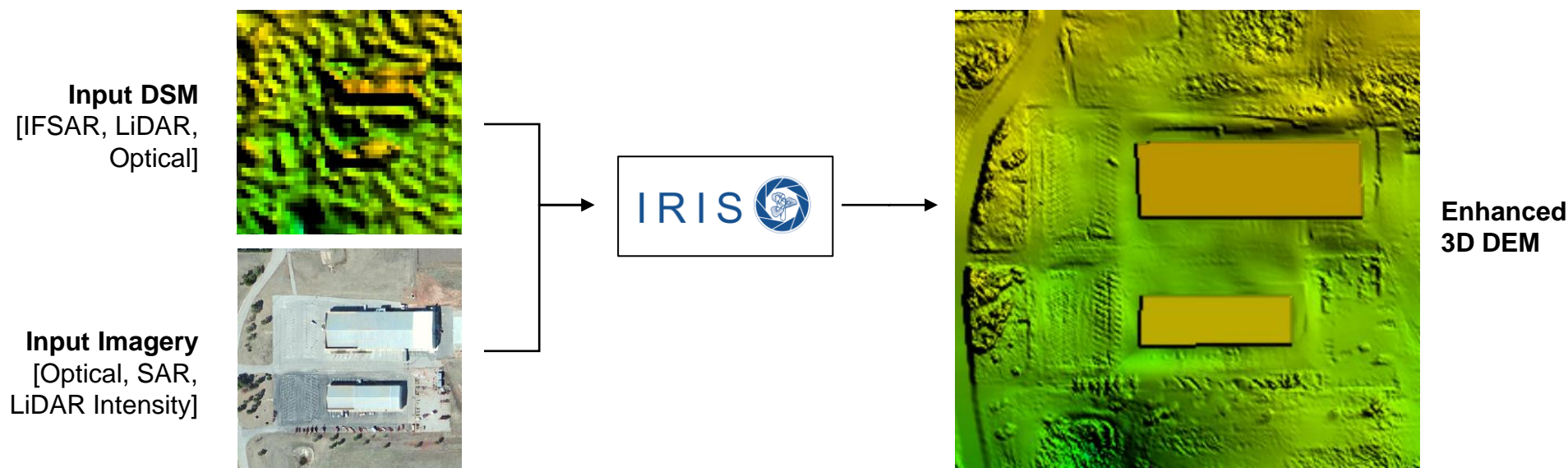
Patented Technology: Enhancing 3D Models

Intelligent Resolution Improvement System™ (IRIS), patented in 2019

- IRIS improves 3D model resolution from all sensors using a novel process. It is designed to increase the spatial content, resolution, terrain definition and feature detail in a 3D DEM
- Patented as a “Method and Apparatus for Enhancing 3D Model Resolution” (U.S. Patent No. 10,002,407)
- Technology is sensor-agnostic and scale-invariant – it works on all sensors, at all resolutions. We have applied this breakthrough technology to multiple types of sensors, including optical, SAR and LiDAR, and demonstrated performance at a variety of resolutions

Creates enhanced 3D DEMs

- Exploits the feature details of high-resolution, mono imagery to update existing 3D DEMs so data is never obsolete. A simple 2D mono satellite picture can now be used to update and improve a dense 3D model
- Integrates the image over the DEM surface, enhancing detail that’s only partially captured by lower resolution DEM



Advantages of IRIS: Processing, Exploitation, and Dissemination

Multi-source data integration, at any scale

- Incorporate data from multiple sources and scales
- Leverage existing and current data (drone, electro-optical, SAR, LiDAR) in a single all-source 3D DEM
- Reduce the dependency on new collection, especially in denied environments

Reduce manual processing through AI-driven processes

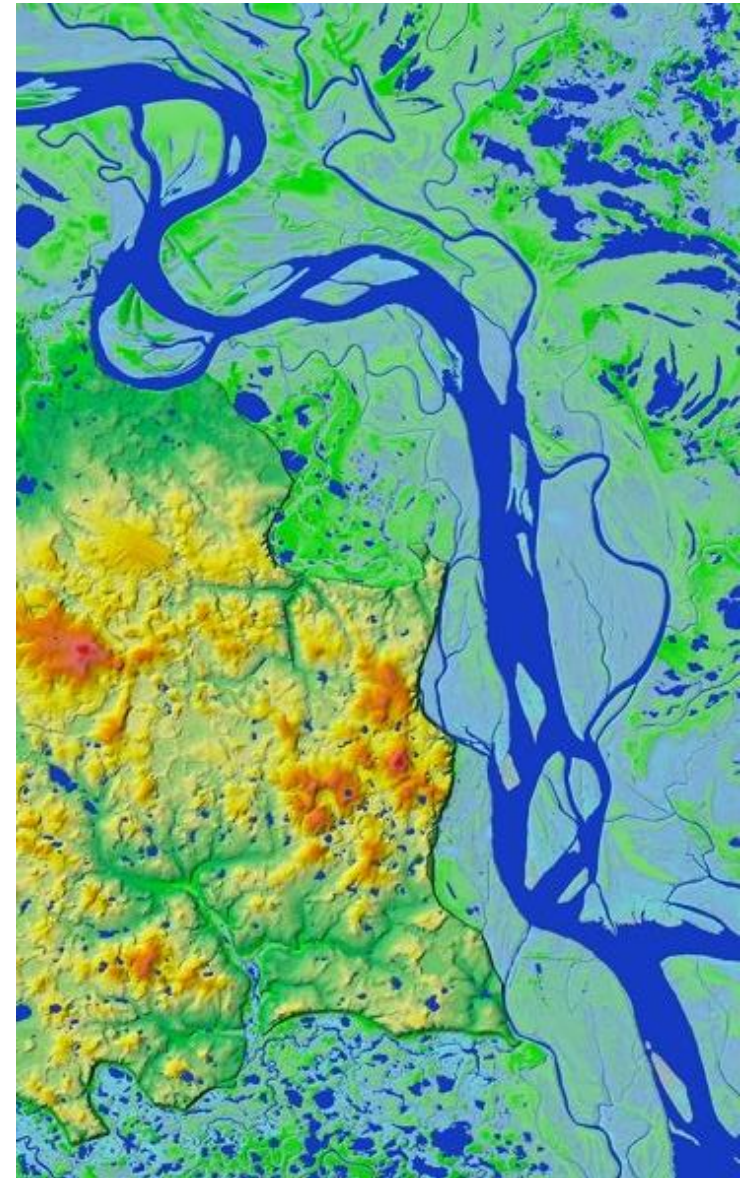
- Extraction of foundation layers such as buildings, roads and land cover
- Automatic generation of bare Earth terrain models
- Rapidly derive topographic layers such as contours and hydrology

Fast, light-weight, scalable processing

- Light-weight process deployed on anything from laptop to enterprise servers
- Commercial, government and military uses are all supported

Rapid exploitation and dissemination

- Analytics and software simplify large-scale terrain data awareness challenges
- Customized solutions provided as Elevation-as-a-Service (EaaS)
- Solve previously intractable terrain problems, everywhere, on-demand



Advantages of a Global Data Library: NEXTMap One™



Extensive geospatial database

- A rich database offering accurate and seamlessly fused mapping products and solutions for government and commercial applications
- Mapping scale starts at 1:5,000

Global coverage

- Available for all countries and locations worldwide

Feature and bare Earth 3D models

- DSM with natural terrain features and DTM showing the bare Earth

Stay up-to-date with the latest data

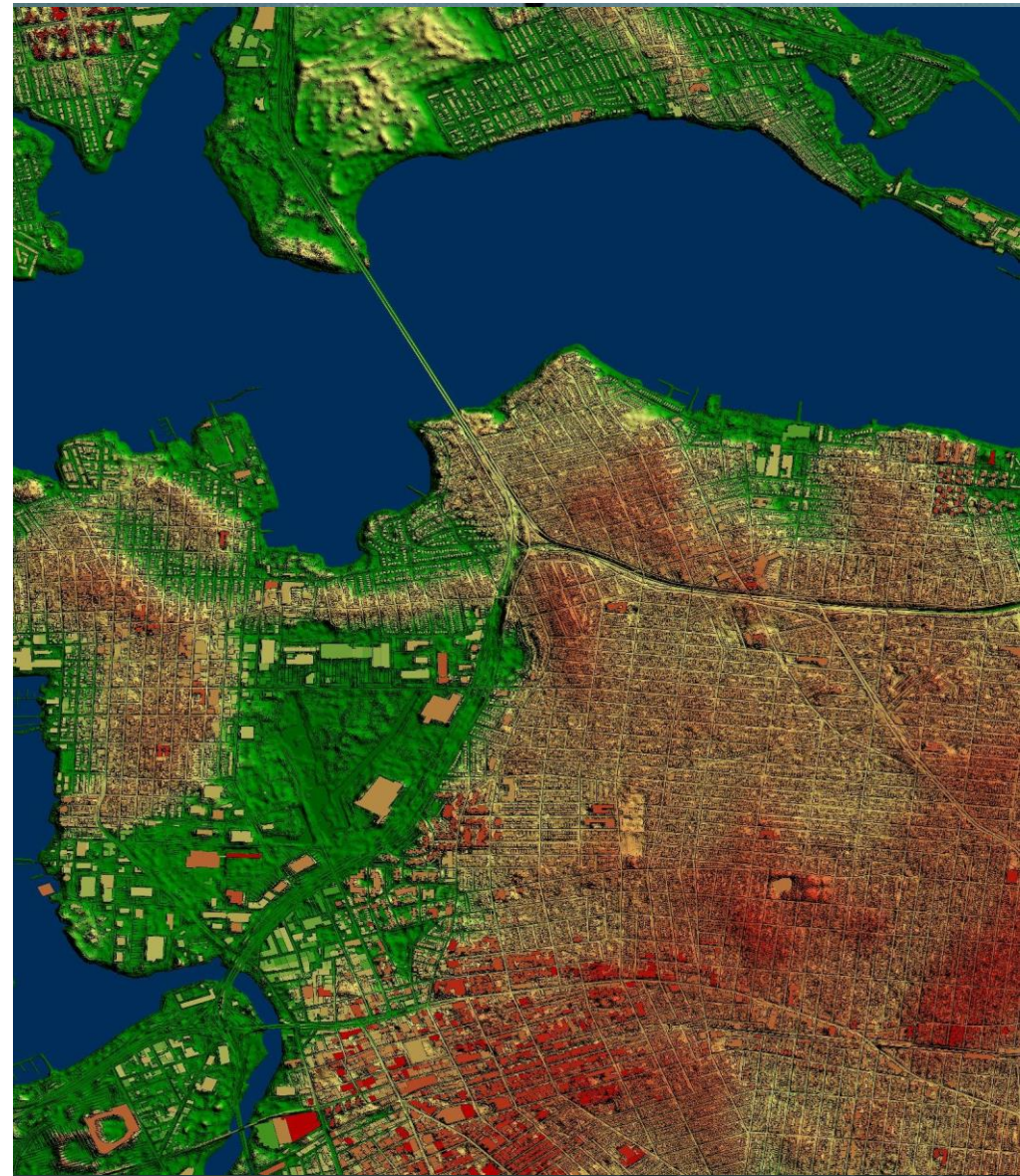
- Refresh available on-demand
- Off-the-shelf NEXTMap One data built with 2016 or newer satellite data

High spatial detail and accuracy

- Resolves features at 1m spatial resolution with a vertical accuracy up to 1m LE90

Limitless applications

- DSM and DTM ideal for in-depth analysis and can be used in countless applications



Low Latency Foundation Data



Contract with National Geospatial-Intelligence Agency (NGA) to maintain geospatial data in high priority AOIs

- Leverages Intermap's new IRIS technology to modernize NGA's role as the functional manager of GEOINT
- Ordering an image in the AOI automatically triggers map data updates – Feature and Elevation data
- Service level agreement requires elevation and imagery updates to be completed in 48 hours
- Pilots completed; Proof of Concept underway

Elevation data can be created at very high resolution and accuracy

- Production and dissemination is where dramatic improvements to latency can be achieved
- Imagery can be obtained in minutes under the NGA EnhancedView contract or from other tactical sensors
- Elevation data can be created in minutes-to-hours depending on the size of the AOI
 - Line of sight
 - Viewshed
 - Helicopter Landing Zone Analysis
 - Optimal UAV route planning
 - Support cross-country movement planning
- Imagery can be orthorectified in seconds with new elevation data

Users' expectations are higher than ever. Exquisite data at mission speed.

GPS-Denied Navigation

Prime government contract with the U.S. Air Force to support the Air Force Research Laboratory (AFRL) in its development of navigation solutions for GPS-denied environments

Under this contract, Intermap will provide AFRL with expertise in radar data collection systems to develop an effective navigation system that operates in a GPS-denied environment

- Radar expertise provides a competitive overmatch and situational awareness in contested environments due to high-resolution and broad-spectrum collection capabilities, particularly the ability to collect data through clouds, smoke, adverse weather, foliage, tree canopy and water

Integrating IFSAR into positioning, navigation and timing (PNT) solutions for addressing GPS-denied navigation

- Incorporating IFSAR technology into navigation systems in GPS-denied areas enables operations to be executed in environments where traditional methods could lead to compromised results
 - Determine terrain height from aircraft through all weather, whereas optical computer-vision navigation systems cannot
 - Active sensor without external dependency on light source, so it can consistently create direct measurements of terrain height, and there are no ambiguities like there are in optical imagery
 - Complete terrain height maps over large areas and produce detailed data at sub-meter resolution levels



Government Base Mapping



Providing precise and efficient mapping for entire countries

- 260 km² / minute of high-resolution IFSAR imaging and precise 1 m 3D elevation data
- Multi-sensor platform
- Compatible with high-resolution data ingested from anywhere on the globe

The unique requirements of each collection are carefully incorporated into every mission plan and collection scenario

- Provide full coverage of the AOI
- Optimal line spacing
- Most efficient cost of collection
- Identify and manage air space restrictions
- Ensure collection specifications are achieved

Ground control

- For many collections, no ground control points (GCPs) are required
- For higher accuracy requirements, GCPs are planned and deployed before collection

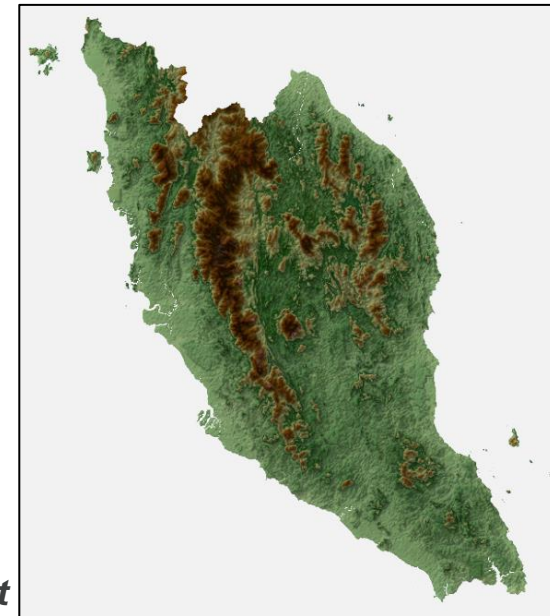
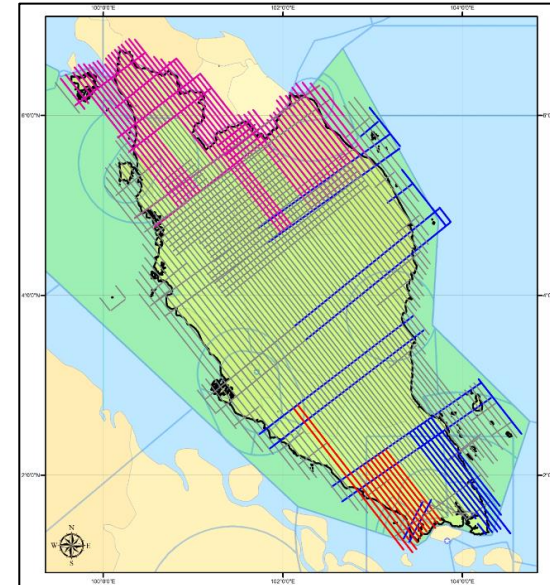
Tactical planning

- Each sortie is meticulously planned to ensure maximum mission efficiency
- Plan based on mission priorities, fuel load, alternate airports, latest weather and NOTAM
- Maximize on-line collection time, while minimizing ferrying time to AOI

High-speed processing provides deliverables quickly after collection

Intermap has always captured 100% of targeted AOIs

Collections have always completed on-schedule or even earlier and on budget



3D Data for Time-Sensitive, Critical Missions



EXAMPLE: Thailand Cave Rescue, 2018

Intermap supported rescue efforts in Chiang Rai, Thailand

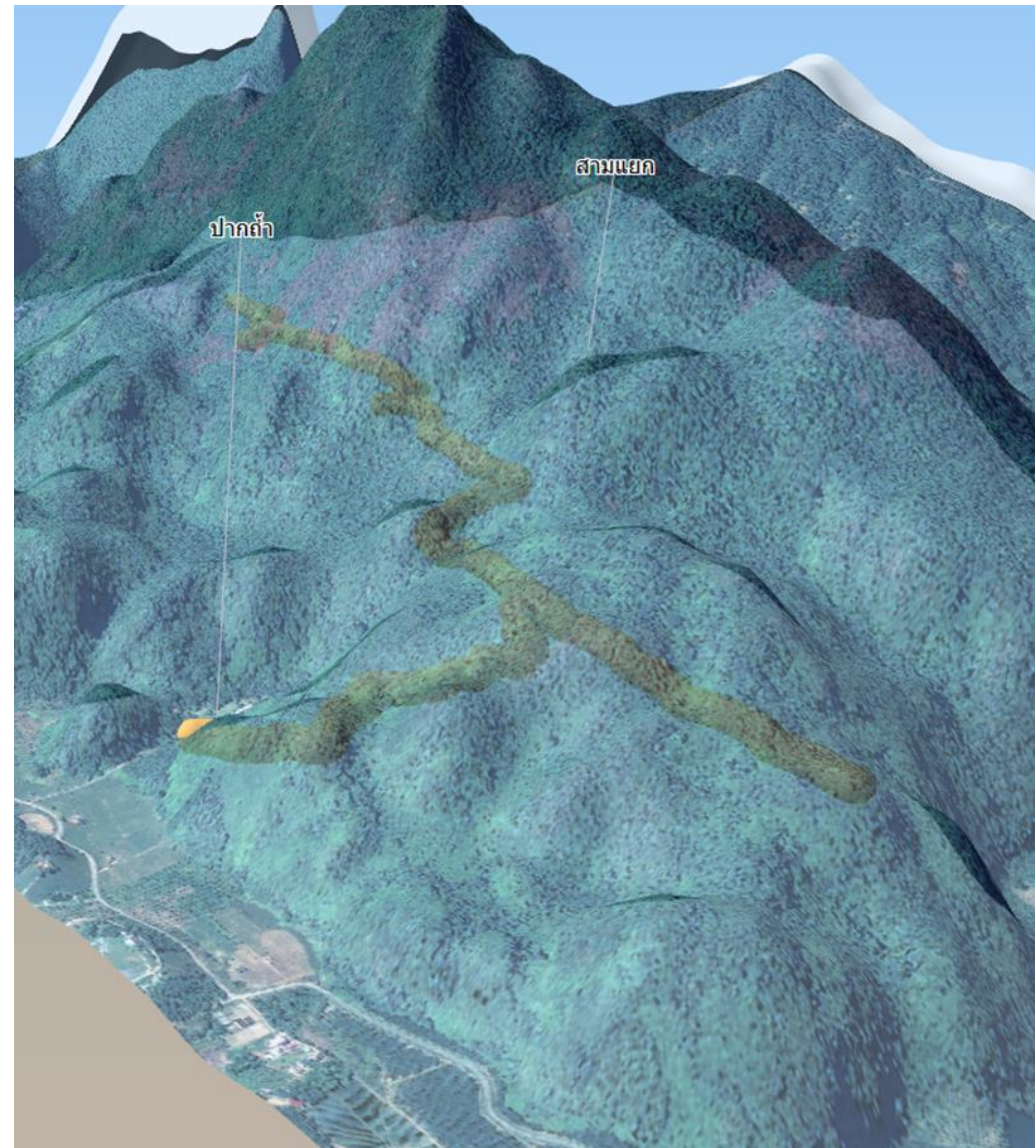
- Provided precise 3D model of the region within 3 hours of support request
- Combined 3D terrain model with 3D cave map to support logistical rescue effort planning

Intermap data enabled accurate planning of shaft drill locations

- Enabled crews to prepare for circumstances that might occur
- Used for pumping out water, pumping in air and providing supplies
- Managing water during heavy rains which threatened to flood the cave and endanger rescue crews

[Video: Data from half a world away helps rescue stranded Thai football team](#)

[Press Release](#)



NEXTView™ Aviation Data Improves Aviation Safety

Certified aviation surface data

- Developed in partnership with Lufthansa Systems, NEXTView is the world's first and only certified commercial aviation 3D DEM
- Certified to EASA and RTCA standards for use in the cockpit, UTM systems and other aviation applications

Specifically designed for aviation applications

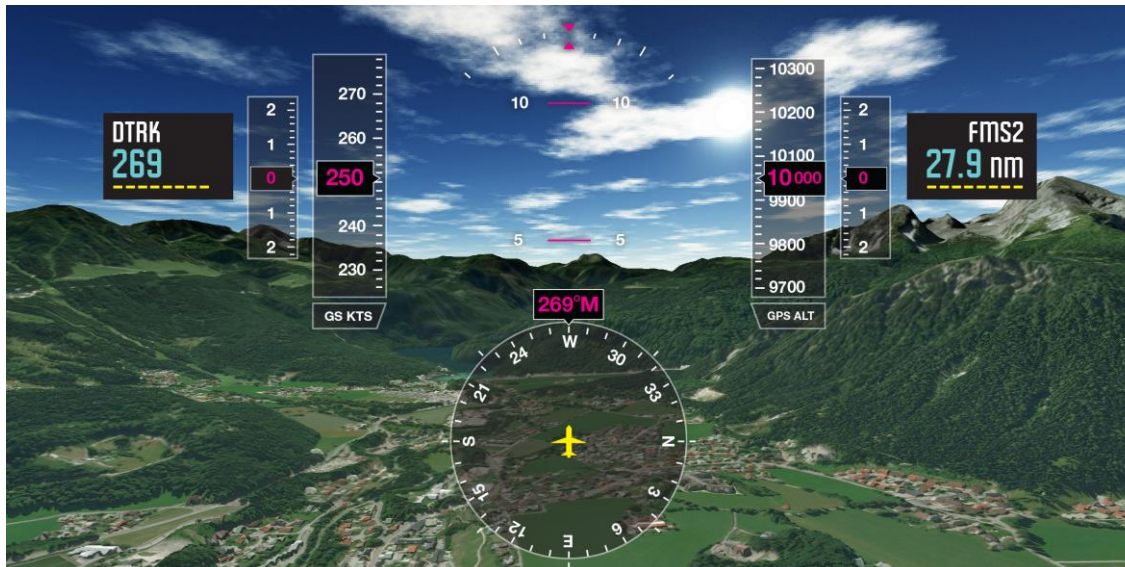
- Includes details for over 12,000 aerodromes and billions of obstructions spanning the globe

High-resolution dataset

- 6-meter resolution is over 200x more detail than currently available 90-meter datasets

Improves flight safety and efficiency

- Plan with confidence with continually updated data in your subscription area



NEXTView™ Applications – Planning to Operations



Drone Route Planning

- Identify low flying options and extend range
- Mission rehearsal

Viewshed / Line-of-Sight

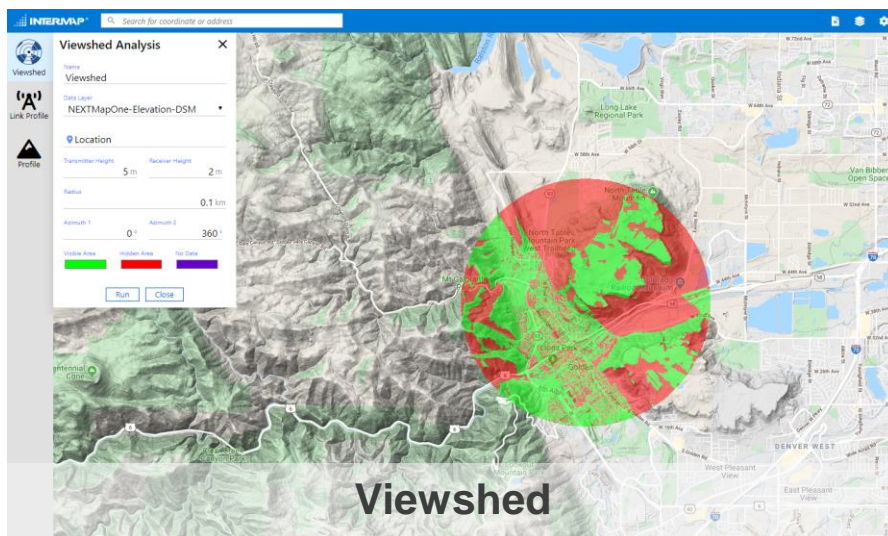
- Provides visibility and obstruction analysis
- Specify transmitter and receiver height
- See and be seen functionality

HLZ Analysis

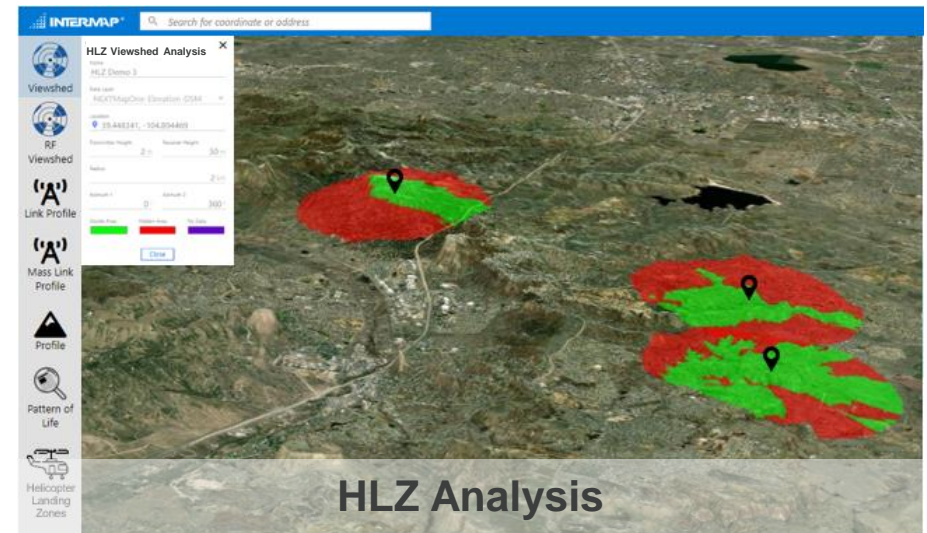
- High-resolution data to find suitable landing zones
- Customizable to aircraft requirements
- Designed for ease of use
- Mission rehearsal



Drone Route Planning



Viewshed



HLZ Analysis

NEXTView™ Applications – UAVs and UTM



NEXTView improves UAV flight safety and efficiency

- Optimize operations for UAV missions such as delivery services and mapping
- Improve efficiency of flight plans by reducing the “uncertainty envelope” on flight paths
- Determine and select optimal routes, minimize elevation gain, determine shortest travel time, and increase payload weight
- Improve safety in all environments with high-precision locations for obstructions and terrain

Surface data is critical for Unmanned Traffic Management systems (UTMs)

- UTM systems compile all the necessary information for safe and efficient flights and assist UAV operators with flight planning and air traffic clearance
- NEXTView provides the UTM industry with certified, detailed surface data to ensure safe UAV operations



NEXTView™ Elevation as a Service Saves Lives



Example: Blackrock Island – Low-Resolution Foundation Data

Irish Coast Guard rescue 116 crash – controlled flight into terrain

- On March 14, 2017, the Irish Coast Guard was conducting a rescue operation with a Sikorsky S-92 CHC Helicopter
- Poor visibility conditions meant the crew had to depend on its EGPWS (Enhanced Ground Proximity Warning System)
- The EGPWS terrain database did not represent the true height of the rocky island, resulting in a collision with the terrain
- All four crew members were killed

Inadequate foundation data cost lives and compromised the mission



NEXTView™ Elevation as a Service Saves Lives

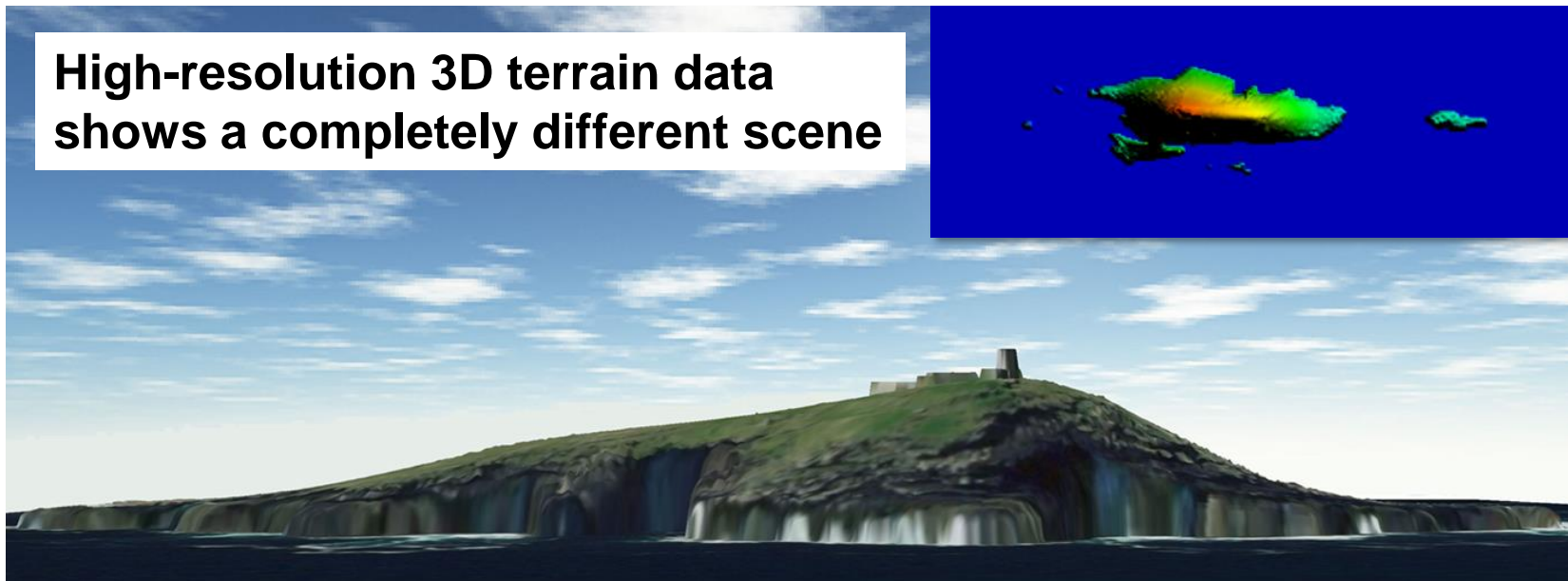


Example: Blackrock Island – NEXTView Aviation DEM

Safely navigate with high-resolution, high-acuity 3D data

- Using high-accuracy 3D data results in a 50m vertical difference compared with the data used by Rescue 116
- Intermap provides reliable data that have been independently validated and verified for critical missions

High-resolution 3D terrain data shows a completely different scene



Intermap Tool Advantages: InsitePro[®] Insurance Underwriting Platform



Accurate flood risk score

- Most accurate flood risk selection, risk segmentation and risk rating
- Floodzone simulation model to visualize flood impacts

Consistent

- Only InsitePro combines NEXTMap data with high-accuracy peril models and analytics

Customizable

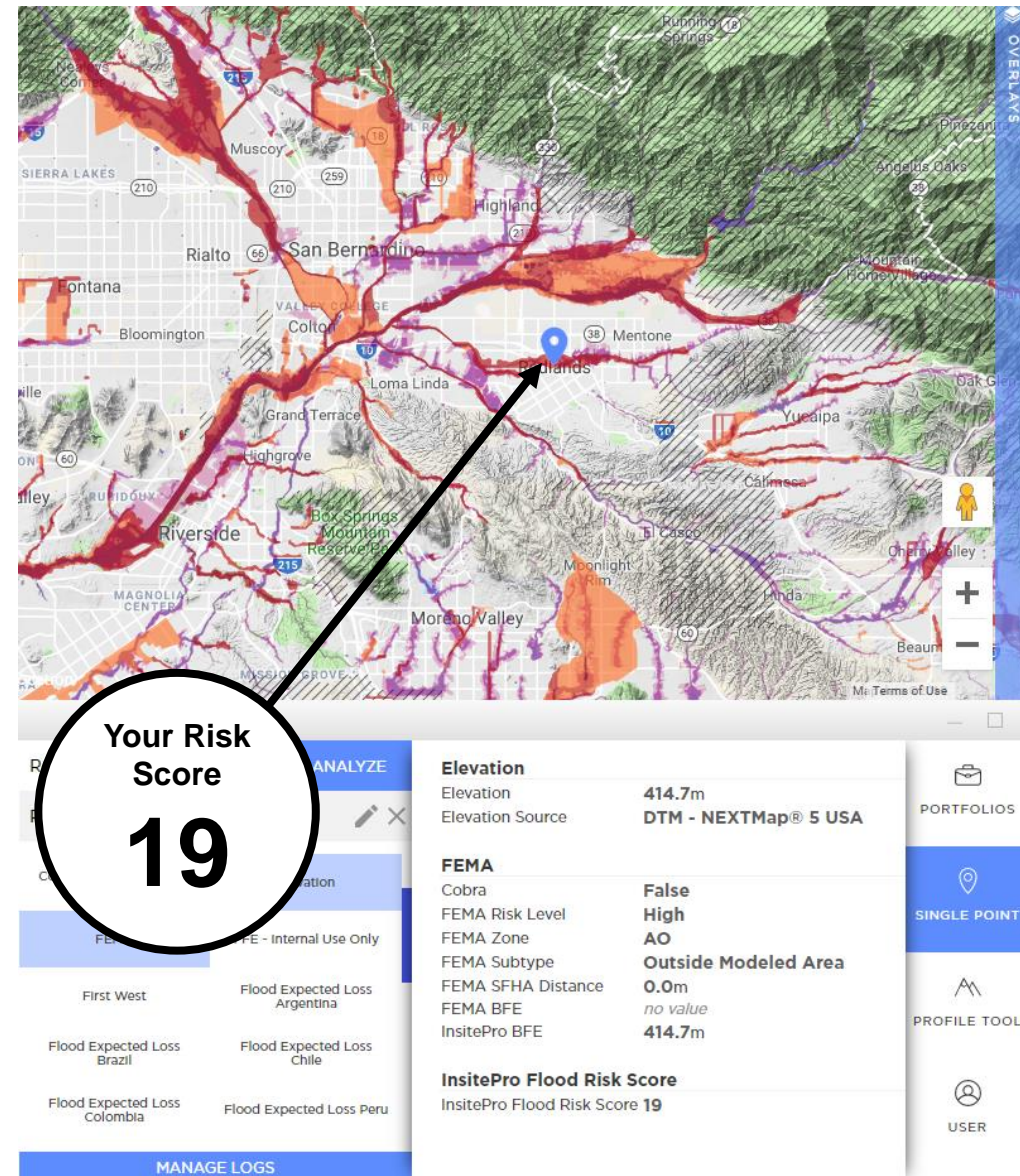
- Customizable score based on specific risk management objectives

Increase profitability

- Better selection of risk leads to higher profitability

Manage entire portfolios

- Know your exposure for millions of address with a single click



Intermap Tool Advantages: Telecom Link Planning



On-demand analysis

- Optimize networks with these applications:
 - Link Profile: instantly profile an entire country or just a single block with line-of-sight analysis
 - Viewshed / RF Viewshed: visibility and obstruction analysis based on NEXTMap One data

High-resolution data

- 1 meter resolution data including DTM, DSM, clutter, and clutter height

Globally available

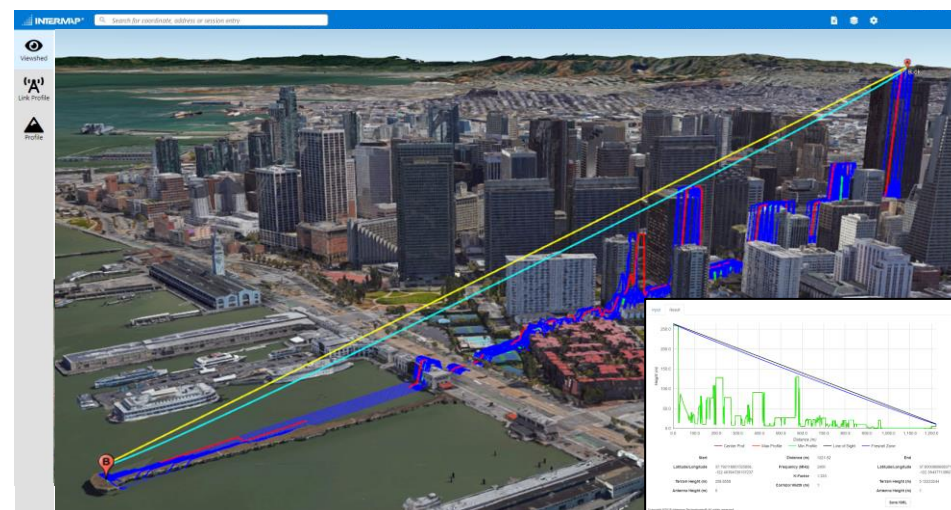
- Consistent and high-quality, available anywhere on the globe

Continually updated

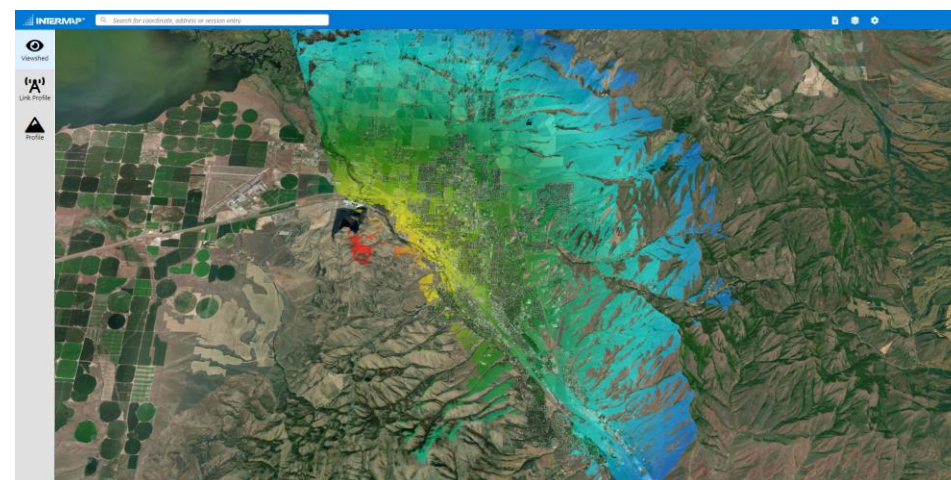
- Plan with confidence with continually updated data in your subscription area

Fully compatible with other software

- 100% compatible with major RF planning tools



Link Profile



RF Viewshed

Intermap Tool Advantages: NEXTWave® Rail



Risk Management Solution for Railway Operators

- Evaluate risk across entire rail networks with the highest quality geospatial data and advanced risk analytics for flood, tree encroachment and wildfire

Tree Management

- Manage tree encroachment with a customized software suite that leverages continually updated satellite information to detect trees near the rails

Flood Risk

- Perform effective risk mitigation to reduce or eliminate repair costs and freight delays by proactively preventing track washout

Wildfire Risk

- Access wildfire risk quickly and efficiently so operations teams can target high-risk areas and focus on clearing and other mitigation measures

SaaS Package

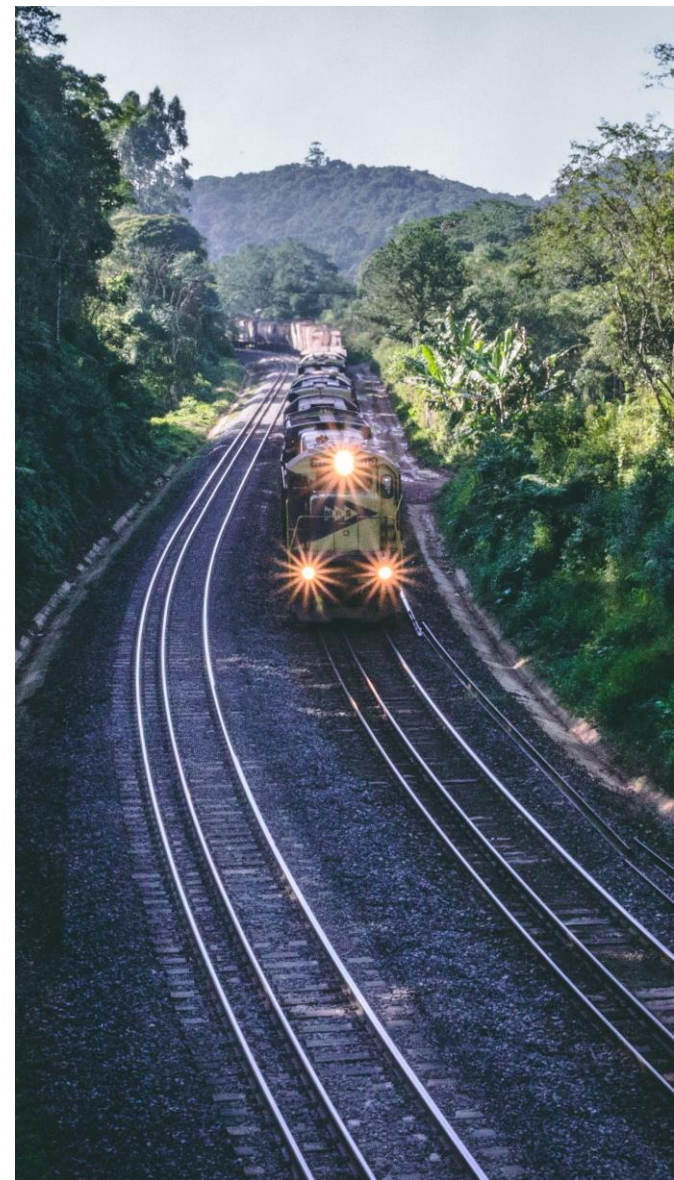
- Advanced risk analytics global insurance companies that is both economical and efficient
- Worldwide 1-meter and 6-meter resolution data including DSM, DTM, clutter, and clutter height

Integrate with an API

- Integrate risk analytics directly into existing workflows using NEXTWave's API and web services capabilities

Continually Updated

- Plan with confidence with continually updated data in your subscription area



Renewable Energy

Intermap empowers renewable energy companies to solve project planning and site assessment challenges by providing the most homogenous and accurate elevation products at a global scale

- When budgeting and permitting for new wind and solar projects, planners perform modeling and analysis that rely upon data availability, consistency and quality
- Simplify exploration, assessment and site development with easy access to globally available elevation data
- Comprehensive, high-resolution NEXTMap® elevation data saves time and money and increases resource visibility, ensuring data as a service is available across the entire enterprise

Applications:

- Slope, aspect and contour map generation
- Cut and fill estimations
- Road and transmission corridor planning
- Environmental impact studies
- Wind and solar site visualization and assessment



Intermap Tool Advantages: NEXTWave® Pattern of Life

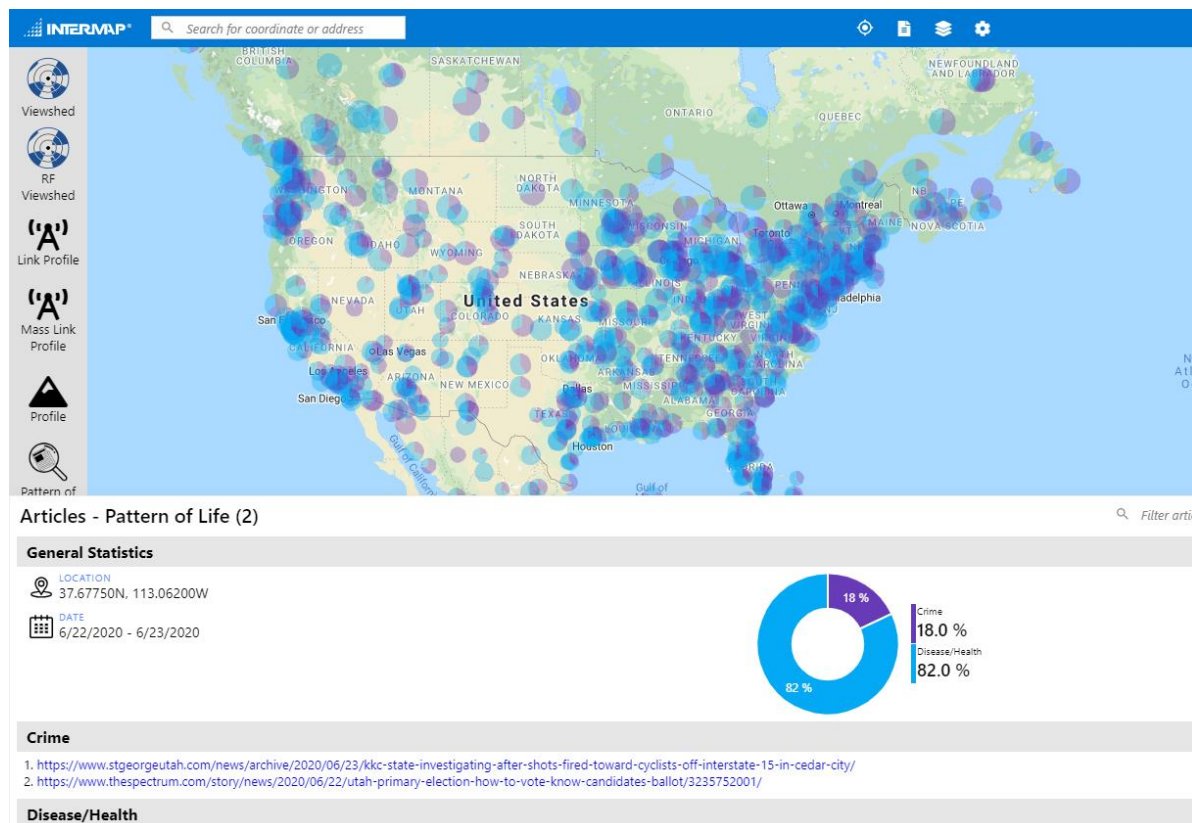


Powerful data and analytics map real-time events into meaningful information

- Real-time events are plotted on a map as they unfold
- Analyze historical events and analyze trends over time

Intelligent filtering and predictive analytics for complete insight

- Filter events by category and find related events
- Identify linked events and predict likely outcomes to plan and manage response
- Call up the original news feed to read the full story and understand the full context of events



Compare correlation and causation with history to predict future events under different scenarios.

Example query of crime and disease data across the U.S. in a span of 48 hours.

Selecting a specific location shows percentage of each category and clickable news articles.

Statutory Rights of Rescission for Purchasers



This presentation is considered an “offering memorandum” under the securities laws of the provinces of Ontario and Saskatchewan and therefore purchasers of securities of Intermap in those provinces are entitled to certain statutory rights if there is a misrepresentation in this presentation, as described below. Purchasers in Alberta, British Columbia and Québec are not entitled to the statutory rights described below. **Securities of Intermap are not being offered to investors in Manitoba, New Brunswick, Nova Scotia, Prince Edward Island, Newfoundland and Labrador, Yukon, the Northwest Territories or Nunavut.**

The following summary is subject to the express provisions of the relevant securities legislation and the rules, regulations, and instruments applicable in Ontario and Saskatchewan, which may contain other limitations and statutory defences on which Intermap and any other applicable parties may rely. These remedies, or notice with respect to these remedies, must be exercised or delivered, as the case may be, by the purchaser within the time limits prescribed by applicable securities legislation. Purchasers should refer to the applicable provisions of the securities legislation of their province for the particulars of these rights or consult with a legal advisor.

For the purposes of the following, “misrepresentation” means:

- a) an untrue statement of a material fact;
- b) an omission to state a material fact that is required to be stated; or
- c) an omission to state a material fact that is necessary to be stated in order for any statement not to be misleading or false in light of the circumstances in which it was made.



Statutory Rights of Rescission in Ontario



Ontario Purchasers

OSC Rule 45-501 and Section 130.1 of the *Securities Act* (Ontario) (the “Ontario Securities Act”) provide that a purchaser who purchases securities offered by an offering memorandum (such as this presentation) has, if the offering memorandum contains a misrepresentation and without regard to whether the purchaser relied on the misrepresentation, a statutory right of action against the issuer for damages or for rescission. If the purchaser elects to exercise the right of rescission, the purchaser will have no right of action for damages. No such action shall be commenced more than, in the case of an action for rescission, 180 days after the date of the transaction that gave rise to the cause of action, or, in the case of any action other than an action for rescission, the earlier of: (a) 180 days after the purchaser first had knowledge of the facts giving rise to the cause of action, or (b) three years after the date of the transaction that gave rise to the cause of action.

The Ontario Securities Act provides a number of limitations and defences to such actions, including the following:

- a) the defendant is not liable if it proves that the purchaser purchased the securities with knowledge of the misrepresentation;
- b) in an action for damages, the defendant shall not be liable for all or any portion of the damages that the issuer proves do not represent the depreciation in value of the securities as a result of the misrepresentation relied upon; and
- c) in no case shall the amount recoverable exceed the price at which the securities were offered.

OSC Rule 45-501 provides that when an offering memorandum is delivered to a purchaser (including a prospective purchaser) to whom securities are distributed in reliance on the “accredited investor” prospectus exemption, the right of action referred to in Section 130.1 of the Ontario Securities Act is applicable unless the purchaser (including a prospective purchaser) is: (a) a Canadian financial institution, meaning either (i) an association governed by the *Cooperative Credit Associations Act* (Canada) or a central cooperative credit society for which an order has been made under section 473(1) of that Act; or (ii) a bank, loan corporation, trust company, trust corporation, insurance company, treasury branch, credit union, caisse populaire, financial services cooperative, or league that, in each case, is authorized by an enactment of Canada or a jurisdiction of Canada to carry on business in Canada or a jurisdiction in Canada; (b) a Schedule III bank, meaning an authorized foreign bank named in Schedule III of the *Bank Act* (Canada); (c) the Business Development Bank of Canada incorporated under the *Business Development Bank of Canada Act* (Canada), or (d) a subsidiary of any person referred to in (a), (b) or (c) above, if the person owns all of the voting securities of the subsidiary, except the voting securities required by law to be owned by the directors of that subsidiary.



Statutory Rights of Rescission in Saskatchewan



Saskatchewan Purchasers

Section 138 of *The Securities Act, 1988* (Saskatchewan) (the “Saskatchewan Securities Act”) provides that in the event that an offering memorandum (such as this presentation), together with any amendments thereto contains a misrepresentation, a purchaser who purchases securities covered by the offering memorandum has, without regard to whether the purchaser relied on the misrepresentation, a statutory right for rescission against the issuer or a right of action for damages against the issuer, every director of the issuer at the time the offering memorandum or any amendment thereto was sent or delivered, and every person or company whose consent has been filed with respect to the offering (but only with respect to reports, opinions or statements that have been made by them), among others. If such purchaser elects to exercise a statutory right of rescission against the issuer, it shall have no right of action for damages. No such action for rescission or damages shall be commenced more than, in the case of a right of rescission, 180 days after the date of the transaction that gave rise to the cause of action or, in the case of any action, other than an action for rescission, such action shall be commenced before the earlier of (i) one year after the purchaser first had knowledge of the facts giving rise to the cause of action and (ii) six years after the date of the transaction that gave rise to the cause of action.

The Saskatchewan Securities Act provides a number of limitations and defenses, including the following:

- a) no person or company will be liable if the person or company proves that the purchaser purchased the securities with knowledge of the misrepresentation;
- b) in the case of an action for damages, no person or company will be liable for all or any portion of the damages that it proves do not represent the depreciation in value of the securities as a result of the misrepresentation; and
- c) in no case will the amount recoverable in any action exceed the price at which the securities were offered to the purchaser.



Copyright Notice



All materials contained herein are protected by copyright, and are owned or controlled by or licensed to Intermap Technologies, Inc. UNAUTHORIZED COPYING, REPRODUCTION, REPUBLISHING, UPLOADING, POSTING, TRANSMITTING OR DUPLICATING OF ANY OF THE MATERIAL IS PROHIBITED.

NEXTMap® is a registered trademark of Intermap Technologies, Inc. All rights are reserved.

Questions regarding this disclaimer or any information contained herein may be directed to:

Jennifer Bakken
Executive Vice President and CFO
Intermap Technologies, Inc.
8310 S. Valley Highway, Ste. 240
Englewood, CO 80112
CFO@intermap.com



Your World.

Made Simple.

