



Geospatial Intelligence: Understanding the World in 3D

November 2022



© 2022 Intermap Technologies. All rights reserved. – corporate proprietary restrictions on use and disclosure

Your World. Made Simple.

The Power of 3D



Intermap Technologies is a geospatial intelligence provider, producing 3D digital representations of Earth's surface and the features on it

A detailed 3D digital representation of a city, showing numerous buildings of varying heights and shapes. The buildings are rendered in a color gradient from blue at the base to yellow and red at the top, indicating height. The surrounding terrain and streets are shown in a darker blue/purple hue.

3D solutions offer critical situational awareness, such as the location and height of buildings

Precision Solutions for Non-Expert Users



Customers subscribe to services that offer precision solutions for non-expert users

- Governments rely on Intermap for national mapping programs and new technology
- Commercial applications include insurance, aviation, telecom, energy, climate resilience and space

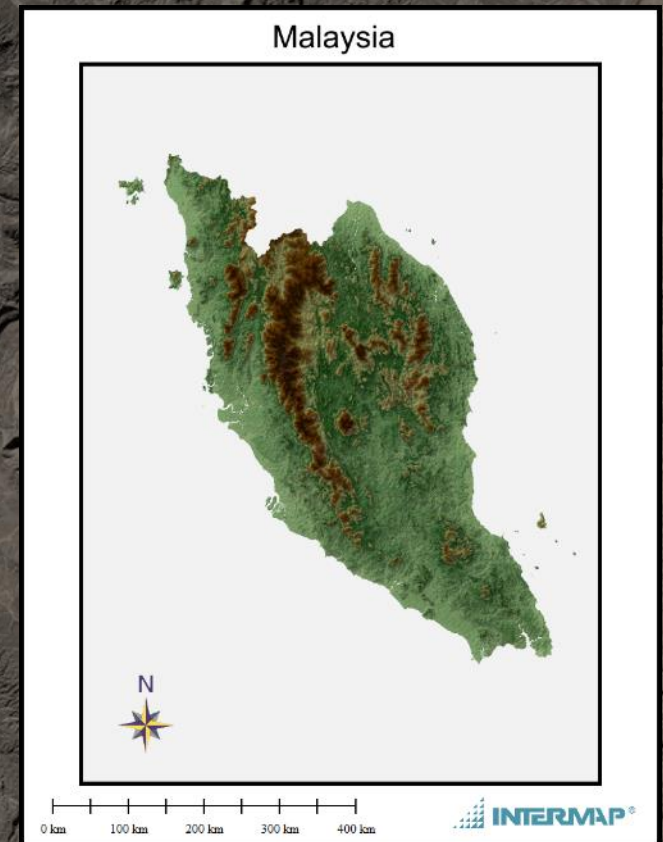
Founded in 1997, headquartered near the U.S. Air Force base in Denver, with engineering in Calgary, software development in Prague and data production in Jakarta, Intermap experience includes 61 countries

Vital Government Mapping

Intermap creates countrywide maps to support government policy, resource management, disaster preparedness and land use planning

The Malaysian government relies on Intermap to map its country

- Malaysia is tropical, heavily forested and spans a large area, often covered by clouds and rain
- Intermap's unique sensors send signals through clouds, smoke, rain and foliage to map the terrain



Supporting Governments Around the World

A landscape photograph of a Colombian mountain range. The foreground shows a lush green valley with some palm trees, while the background features steep, forested mountains partially shrouded in white mist or low clouds.

Colombian National Mapping Agency

Providing elevation data for land management and territorial planning

A landscape photograph of an Alaskan wilderness. The foreground is a vast, flat tundra with dry, yellowish-brown vegetation. In the middle ground, there is a dense line of dark evergreen trees. The background is dominated by a range of rugged, snow-capped mountains under a clear, pale blue sky.

U.S. Geological Survey Alaska Program

Fostering natural resource development, environmental monitoring, climate resilience, infrastructure development and national security

U.S. Government Agencies



National Geospatial-Intelligence Agency (NGA)

- Working with NGA on global mapping programs and geospatial analysis

U.S. Air Force

- Teaming on the \$950m Advanced Battle Management System contract for geospatial navigation system R&D

Navigating in Challenging Environments

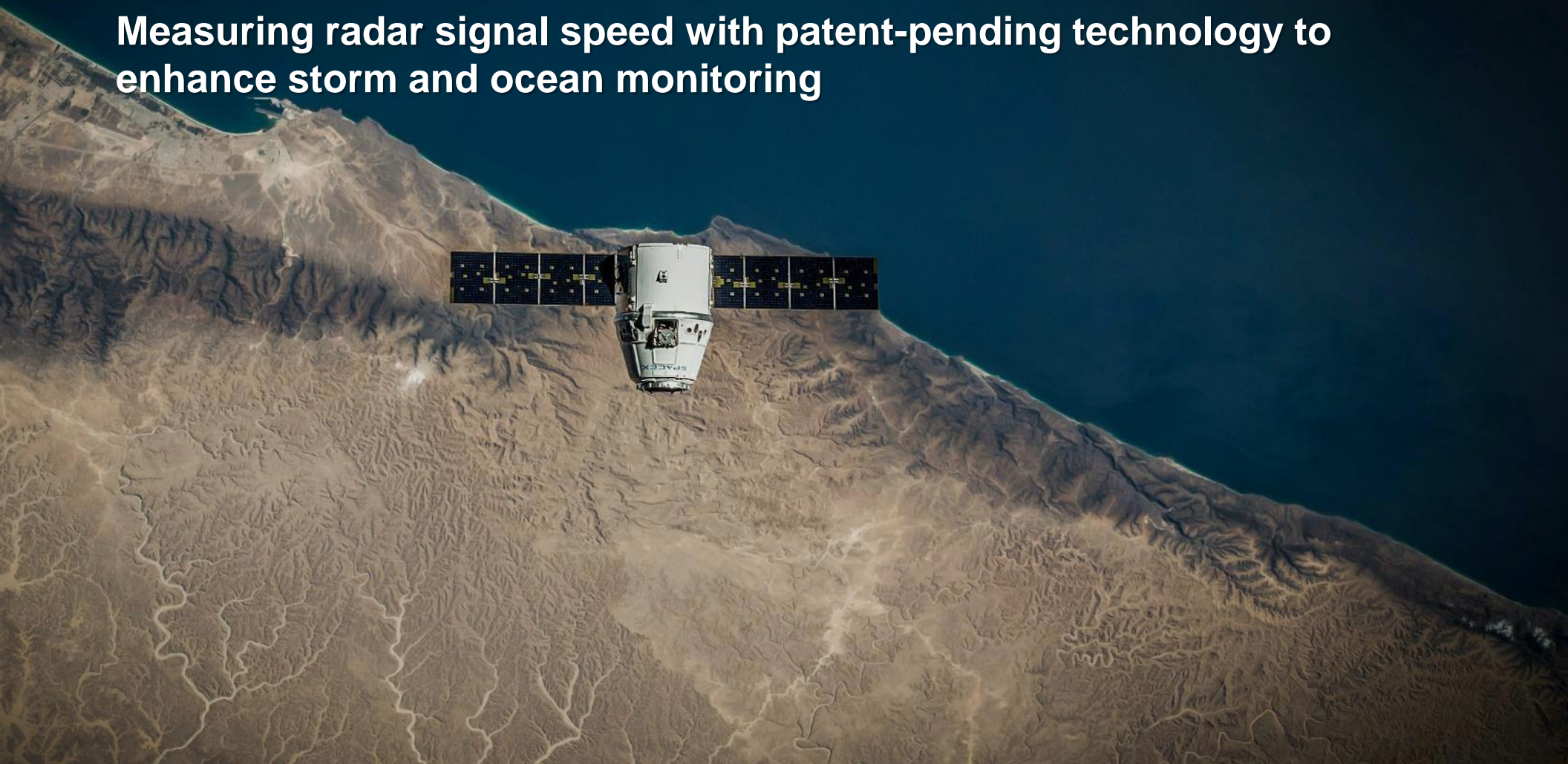


Working with the U.S. Air Force Research Laboratory to develop navigation systems that operate without GPS



Increasing satellite imagery accuracy, enabling measurement of area and distance on the ground

Measuring radar signal speed with patent-pending technology to enhance storm and ocean monitoring



Commercial Application Subscriptions



Software and analytics provide key insights in a variety of industries, including telecom, climate resilience and renewable energy

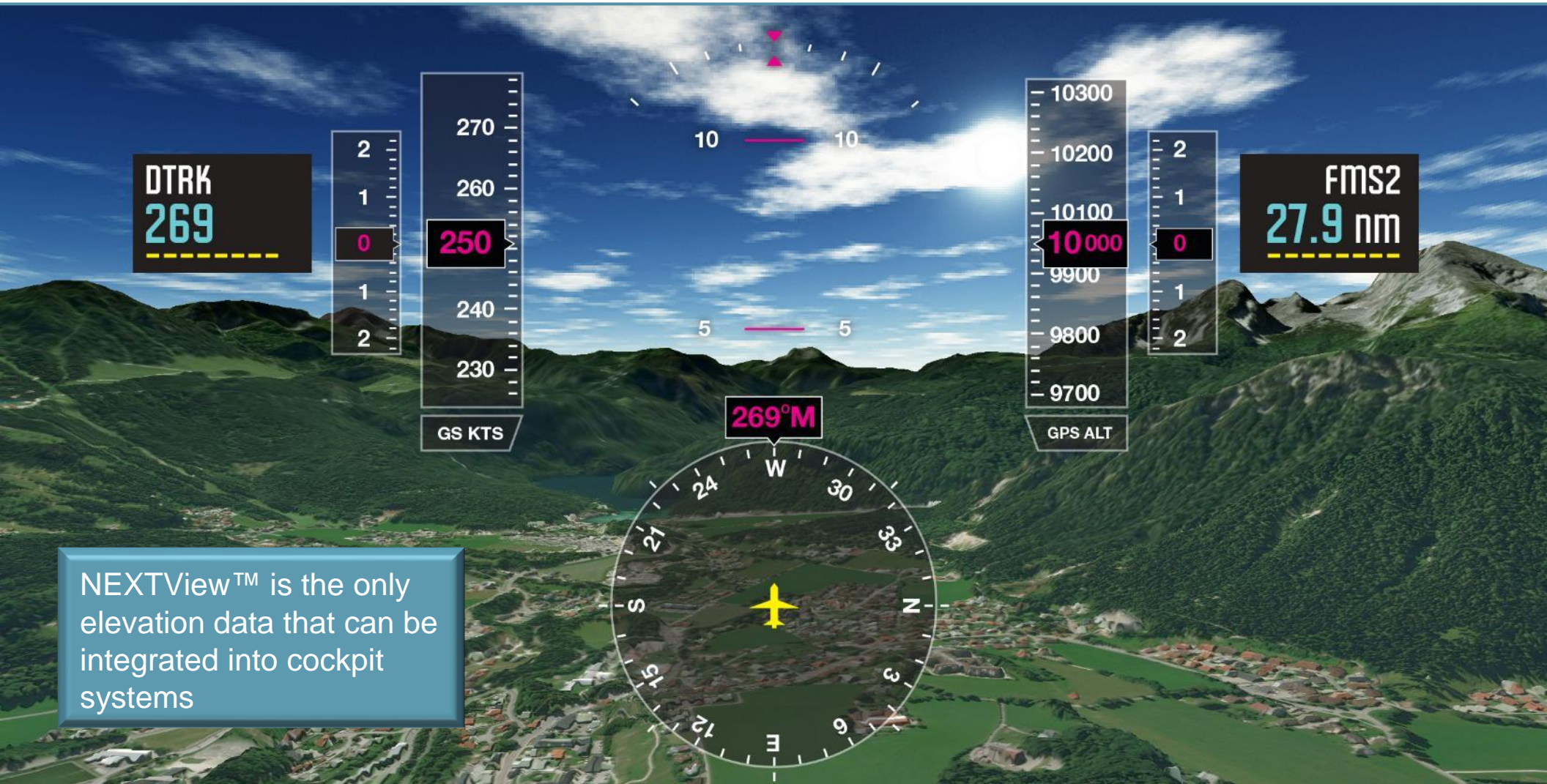
- Powers the Garmin Golf™ application, covering 42,000 golf courses around the world



Boosting Flight Safety



With its partner Lufthansa Systems, Intermap created the world's first and only elevation dataset certified for aviation



NEXTView™ is the only elevation data that can be integrated into cockpit systems

Saving Lives: Blackrock Island, Ireland



During a mission in 2017, a rescue helicopter struck an island that wasn't in the onboard terrain warning database

Data onboard the helicopter

NEXTView shows more than a 50-meter difference compared with the data on the helicopter

NEXTView

Powering Urban Air Mobility



With its partner Skyroads, Intermap is enabling urban air mobility on future digital roads in the sky

Certified aviation-specific data improves safety and efficiency of drone navigation, enabling autonomous flights above cities



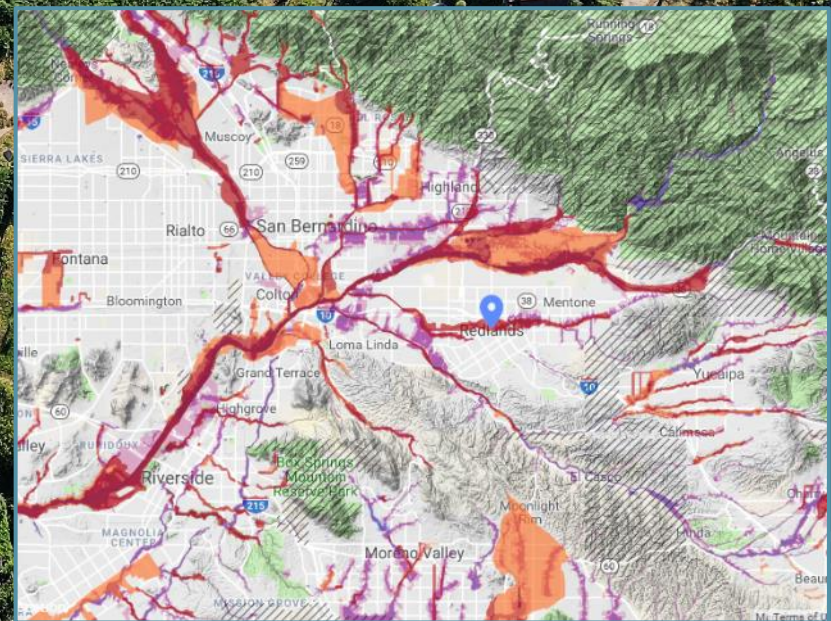
Global Risk Assessment Solutions



Intermap delivers global precision solutions for flood and wildfire risk assessment, combining advanced models, maps and analytics

Cloud-based software provides location-specific information to mitigate losses from natural disasters and determine a property's correct level of insurance

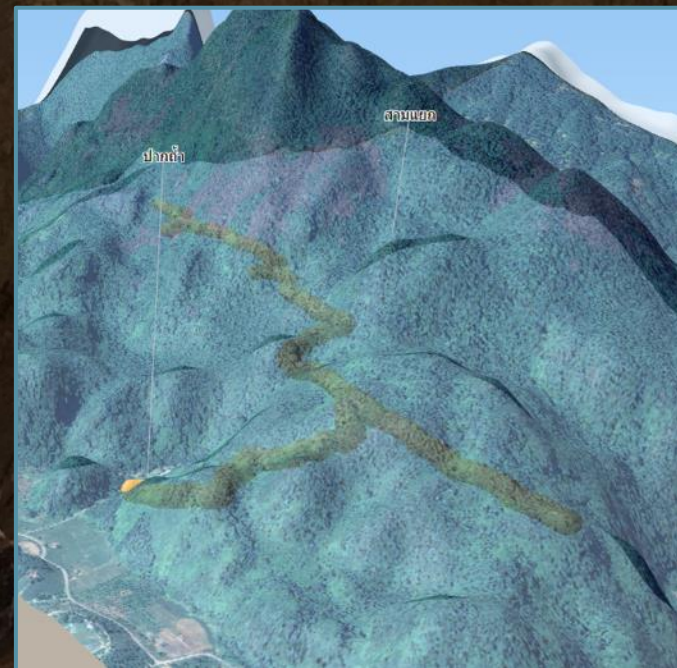
- U.S. customers include multiple top-10 property and casualty insurers
- European customers include Generali, Allianz and Deloitte



Enabling Urgent, Critical Missions



In 2018, Intermap supported emergency rescue planning in Chiang Rai, Thailand by quickly creating a precise 3D model of the cave



Enabled logistics

- Shaft drill locations
- Pumping water out and air in; providing supplies
- Water management during rains that could flood the cave and endanger the rescue

Video: Data from half a world away helps rescue stranded Thai football team

Source: National Geographic

Mapping the World in 3D



Intermap is planning and preparing to deploy on multiple national government programs



Your World.

Made Simple.



Confidential Information Notice



COPYRIGHT NOTICE

All materials contained herein are protected by copyright and are owned or controlled by or licensed to Intermap Technologies, Inc. **UNAUTHORIZED COPYING, REPRODUCTION, REPUBLISHING, UPLOADING, POSTING, TRANSMITTING OR DUPLICATING OF ANY OF THE MATERIAL IS PROHIBITED.**

NEXTMap is a registered trademark of Intermap Technologies, Inc. All rights are reserved.

Questions regarding this disclaimer or any information contained herein may be directed to:

Jennifer Bakken
Executive Vice President and CFO
Intermap Technologies, Inc.
8310 S. Valley Highway, Ste. 240
Englewood, CO 80112
CFO@intermap.com

