

**INTERMAP**
Answers Now™**NEXTMAP 5™****Powerful Elevation Data**

Comprehensive Global 3D Coverage

The high-resolution NEXTMap 5™ database from Intermap Technologies® provides seamless, wide-area digital elevation data and images, collected using advanced technologies, to enable accurate geospatial analyses across the globe. Consisting of a 5m posted digital surface model (DSM), 5m posted digital terrain model (DTM), and up to 50cm orthorectified imagery (ORI), NEXTMap is ideal for everything from engineering and infrastructure to regional and national mapping.

Key Benefits & Features



15M km2 Coverage

NEXTMap 5 is available in over 36 countries from airborne data collection



Surface and Bare Earth Model

NEXTMap 5 includes a fully qualified DSM and DTM



Advanced IFSAR Technology

Airborne IFSAR penetrate clouds, smoke, and haze to produce sharp, cloud-free data



Incredible Accuracy

Detailed elevation details with an absolute vertical accuracy of 1m RMSE (region dependent)



Hydro Enforced

Accurate coastlines, flattened water bodies, detailed drainages and monotonic flow



Reliable and Proven

Used by thousands of customers worldwide across many industries

Reliable and Proven

Intermap's NEXTMap 5 products have been delivered to thousands of customers and utilized in countless applications around the world. Clients range from large government agencies and Fortune 500 companies to small businesses and academics. Whatever the application, Intermap's team is dedicated to help.

Highest Quality Standards

NEXTMap 5 was collected using a fleet of Intermap's airborne IFSAR platforms. Because IFSAR technology is unaffected by clouds and weather, Intermap ensures the product is void free and seamless. Intermap utilizes advanced 3D stereo editing to ensure accurate hydro enforcement and to digitally identify and remove surface features to create both an accurate DSM and DTM. All of our data products are backed by an ISO- certification in collection and production. It includes tens of thousands of ground control points to ensure our product meets the accurate specifications required.

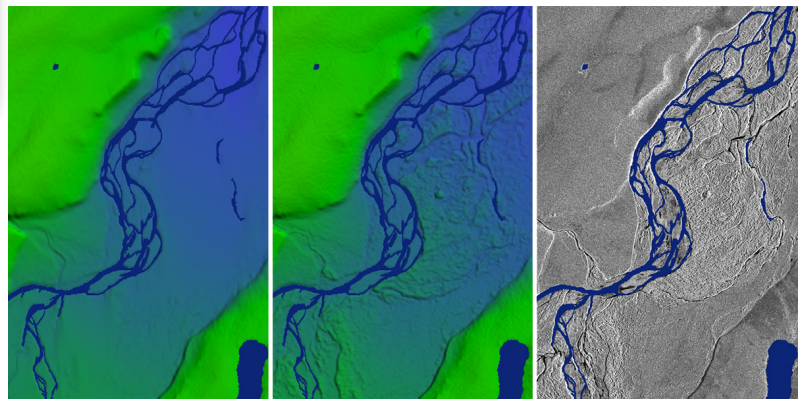
Specifications

Item	Specification
Data Type	DSM (float) DTM (float) ORI (image)
Coverage	15M km2 (35+ countries)
Resolution	5m posted (DSM / DTM) 50cm (ORI)
Absolute Vertical Accuracy (DSM / DTM)*	1m RMSE (1.65m LE90)

**As measured in unobstructed regions with slopes less than 10 degrees. Actual specification may be region dependent.*

Learn more

For more information about how you can benefit from Intermap's NEXTMap 5 for your geospatial needs, please contact your Intermap representative or an Intermap business partner.



Left to Right: The NEXTMap DTM, DSM, and ORI

INTERMAP

Answers Now™

**Visit www.intermap.com
or call +1 (303) 708-0955
for more information.**

Intermap Technologies® is an industry leader serving a diverse geospatial marketplace. We provide highly accurate geospatial information to help commercial enterprises and government agencies make better location-based decisions.

Copyright 2018. Intermap Technologies®.
All Rights Reserved.

INTERMAP.COM

**NEXTMap® Data Subscriptions are available now.
Contact Intermap to access free demo datasets and analytics today!**