

**INTERMAP**  
Answers Now™**NEXTMAP®**

Hillshade



## Topographic Visualization Data

NEXTMap Hillshade™ imagery from Intermap Technologies® provides a visual representation of the topographic relief in your area of interest. While many terrain representations or user-generated hillshade images are built from coarse-resolution data, our hillshade image is based on our NEXTMap® elevation data sets, enabling a more accurate and detailed picture of the topography. The hillshade image is created by casting shadows on the slope of the elevation to graphically enhance its relief; the terrain features are accentuated and can be easily interpreted. They are ready to use, accurate, global, and cost effective. Our hillshade image can help you save time from aggregating and converting elevation data yourself.

## Detailed image, well-suited for visualization purposes

Our hillshade image is ideal for many applications including hiking, site planning, presentations, and plotting. Whether you use it as a reference layer for 2D maps or for 3D-based visualization, NEXTMap Hillshade is available in a global color scheme that is consistent for any project in any region.

## Built on the foundation of NEXTMap

NEXTMap hillshade image is generated from our highly accurate NEXTMap digital elevation models (DEM) including NEXTMap 5, World 10, and World 30 data sets. Intermap's hillshade image is available for both Digital Surface Model (DSM) and Digital Terrain Model (DTM) data sets to provide overlays with and without surface features such as buildings and trees.

## Instant access via data subscriptions

Intermap's cloud services enable you to immediately access data products and services for your area of interest. Since the products and services are hosted and stored in the cloud, costs and resources associated with storing and managing large datasets locally are reduced. Our NEXTMap database is frequently updated providing you with the most current information available. Additional data sets, online tools, and analytics are also available to perform simple analyses from any web browser and enable better terrain-based decisions without the need for any GIS software.

NEXTMap Hillshade is available through the standard Open Geospatial Consortium (OGC) Web Mapping Service (WMS) protocol that is compatible with hundreds of third-party tools and applications. It is used for visualization purposes since elevation data is not contained in the image. Data access is available through two low-cost options: an annual per user subscription or as a pay-as-you-go subscription service.

## Specifications

Item	Specification
Data Type	Hillshade
Data Sources & coverage	NEXTMap 5 DSM/ DTM (Regional) World 10 DSM/ DTM (Global) World 30 DSM (Global)
Resolution	Available as 5, 10, or 30m
Subscription	Pay as you go, or annual user subscription
Protocol	WMS
Availability	Now

## Learn more

For more information about how you can benefit from Intermap's hillshade image for your geospatial needs, please contact your Intermap representative or an Intermap business partner.

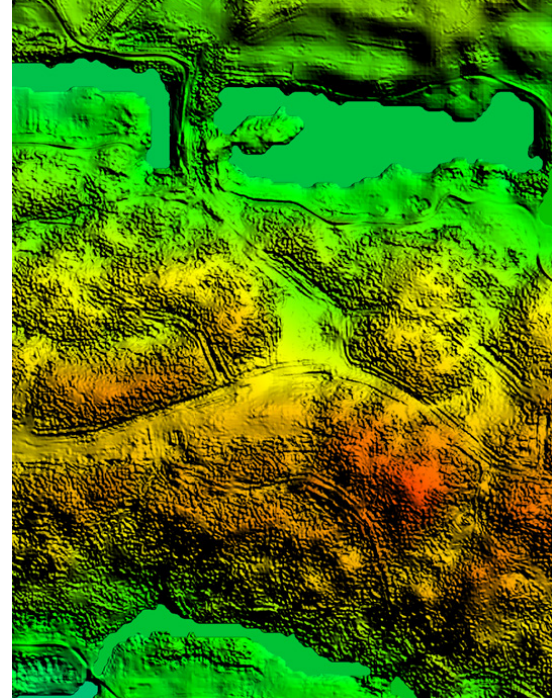
**INTERMAP**

Answers Now™

**Visit [www.intermap.com](http://www.intermap.com)  
or call +1 (303) 708-0955  
for more information.**

Intermap Technologies® is an industry leader serving a diverse geospatial marketplace. We provide highly accurate geospatial information to help commercial enterprises and government agencies make better location-based decisions.

Copyright 2018. Intermap Technologies®.  
All Rights Reserved.

**INTERMAP.COM**

*NEXTMap Hillshade, Malaysia*

**NEXTMap® Data Subscriptions are available now.  
Contact Intermap to access free demo datasets and analytics today!**