

**INTERMAP**
Answers Now™**NEXTMAP®****World 10™**

Accurate and Comprehensive Worldwide Elevation Data

NEXTMap World 10 is Intermap's 2nd generation global digital elevation models (DEM) featuring a 10-meter ground sampling distance (GSD). World 10 is available as both a digital surface model (DSM) with surface features such as trees and buildings or as a digital terrain model (DTM) of the bare earth. World 10 is designed as a cost-effective solution for applications where a reliable and consistent global coverage is needed. Perfect for a diverse range of applications across many industries including navigation, agriculture, telecommunication, energy, defense, military, and government services.

Key Benefits & Features

**Worldwide Coverage**

100% inclusion of the Earth's entire 150 million square kilometers

**Surface and Bare Earth Model**

World 10 includes a fully qualified DSM and DTM

**Enhanced Polar Regions**

Polar regions and global coastlines are more accurately defined

**Consistent Global Accuracy**

Seamless with an absolute vertical accuracy of 10m LE95

**Hydro Enforced**

Water bodies & coastlines are flattened and corrected for accurate measurement

**Enhanced Spatial Detail**

World 10 is posted at 10m and contains enhanced details not visible in other global data sets

Detailed Global Data

World 10, Intermap's second generation global data set, was built using an advanced proprietary technology that not only corrects, aligns, filters, but also enhances and fuses terrain features. World 10 combines the best features from multiple resources including satellite, airborne, and ground points to produce a single seamless product. Any errors, voids, or gaps have been systematically corrected. Data is fully hydro enforced and includes flattening of water bodies and adjustments to be consistent globally. Coastal definitions have been enhanced and polar regions sharpened. Surface features such as trees and buildings have been digitally removed using advanced 3D stereo editing to produce a bare earth surface. The entire data set is corrected using complex 3D modelling using millions of independent control points from sources such as ICESat, ground control, and collection. The result is the highest quality global DSM and DTM available at this price point.

Specifications

Item	Specification
Data Type	DSM (float), DTM
Coverage	Complete Global Coverage
Resolution	1/3 arc second (~10 m)
Absolute Vertical Accuracy	10m LE95 / 8m LE90
Projection	Geographic / WGS84
Geoid	EGM96
Units	Meters

Learn more

World 10 has been proven with hundreds of customers and applications around the globe. For more information about how you can benefit from Intermap's World 10 for your geospatial needs, please contact your Intermap representative or an Intermap business partner.

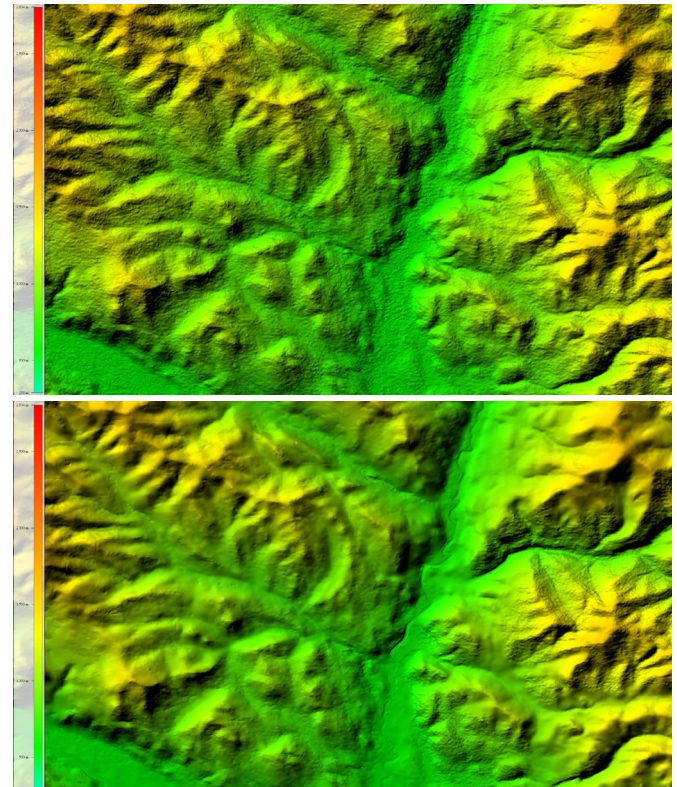
INTERMAP

Answers Now™

**Visit www.intermap.com
or call +1 (303) 708-0955
for more information.**

Intermap Technologies® is an industry leader serving a diverse geospatial marketplace. We provide highly accurate geospatial information to help commercial enterprises and government agencies make better location-based decisions.

Copyright 2018. Intermap Technologies®.
All Rights Reserved.

INTERMAP.COM

NEXTMap World 10 DSM (top) surface features visible such as trees and forest have been removed in the NEXTMap World 10 DTM (bottom)

NEXTMap® Data Subscriptions are available now.
Contact Intermap to access free demo datasets and analytics today!