

INTERMAP
Answers Now™

NEXTMAP®

World 30™

Affordable Global Coverage

Intermap's NEXTMap World 30 digital surface model (DSM) provides seamless, best-available surface elevation data with a 30-meter ground sampling distance (GSD). World 30 is designed as a cost-effective solution for applications where a reliable and consistent global coverage is needed. Perfect for a diverse range of applications across many industries including Navigation, Agriculture, Telecommunication, Energy, Defense, Military, and Government services.

Key Benefits & Features



Worldwide Coverage

100% inclusion of the Earth's entire 150 million square kilometers



Seamless, Void-Free Data

World 30 has complete void-free coverage from coast to coast



Competitive Pricing

World 30 is economically priced to provide high value to your organization



Consistent Global Accuracy

Seamless with an absolute vertical accuracy of 10m LE95



Hydro Enforced

Water bodies & coastlines are flattened and corrected for accurate measurement

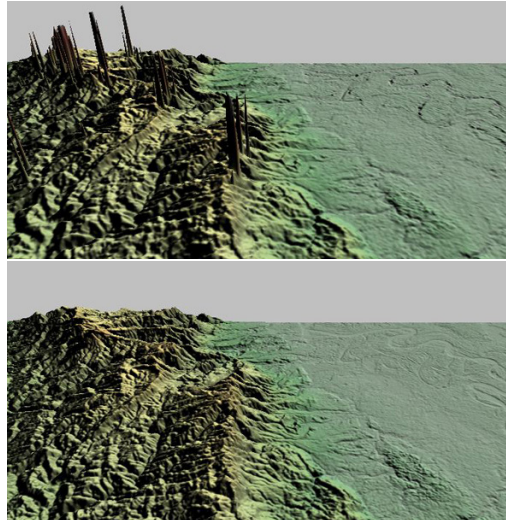


Extensive Flexibility

Proven for a diverse range of applications across many industries

Seamless, Accurate, and Reliable

World 30 was built using and advanced proprietary technology that combines that corrects, aligns, filters, and fuses multiple data sets into a single seamless product. World 30 fills the voids and corrects the errors inherent in the standard data available from resources such as SRTM, ASTER GDEM, and many other sources. World 30 is hydro enforced and includes flattening of water bodies and adjustments of coastlines and oceans to be consistent globally. The entire data set is corrected using a complex 3D modelling using millions of independent control points from sources such as ICESat, Ground Control, and airborne collection. The result is the highest quality global DSM available at this price point.



Above: Aster (top) vs World 30 (below). World 30 is free of spikes, errors, and artifacts, vertically corrected, and includes more spatial detail in the terrain.

Specifications

Item	Specification
Data Type	DSM (32-bit float)
Coverage	Complete Global Coverage
Resolution	1 arc second (~30 m)
Absolute Vertical Accuracy	10m LE95 / 8m LE90
Projection	Geographic / WGS84
Geoid	EGM96
Units	Meters

Learn more

World 30 has been proven with hundreds of customers and hundreds of applications around the globe. For more information about how you can benefit from Intermap's World 30 for your geospatial needs, please contact your Intermap representative or an Intermap business partner.

INTERMAP

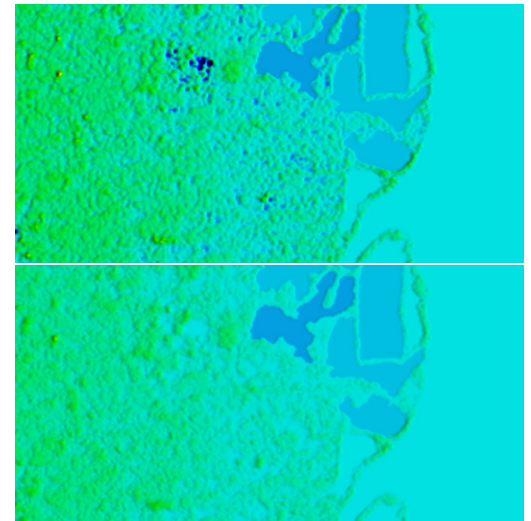
Answers Now™

Visit www.intermap.com
or call +1 (303) 708-0955
for more information.

Intermap Technologies® is an industry leader serving a diverse geospatial marketplace. We provide highly accurate geospatial information to help commercial enterprises and government agencies make better location-based decisions.

Copyright 2018. Intermap Technologies®.
All Rights Reserved.

INTERMAP.COM



Above: SRTM (top) vs World 30 (bottom). SRTM contains voids, noise, and less spatial detail than World 30.

NEXTMap® Data Subscriptions are available now.
Contact Intermap to access free demo datasets and analytics today!