



**Web Services**

**Application Programming  
Interface (API) Specification**

*Version 1.1*

*July 10, 2018*

## Table of Contents

<b>1. Terrain Sources</b>	<b>3</b>
1.1. GET Method	3
1.2. POST Method	4
1.3. Success Responses	4
1.4. Error Responses	7
<b>2. Terrain Values</b>	<b>8</b>
2.1. GET Method	8
2.2. POST Method	9
2.3. Success Responses	9
2.4. Error Responses	10
2.5. Asynchronous Processing	11
2.6. Asynchronous Status	11
2.7. Asynchronous Result	13
<b>3. Terrain Profile</b>	<b>15</b>
3.1. GET Method	15
3.2. POST Method	16
3.3. Success Responses	17
3.4. Error Responses	19
3.5. Asynchronous Processing	20
3.5.1 Asynchronous Status	20
3.5.2 Asynchronous Result	21
<b>4. Terrain Viewshed</b>	<b>25</b>
4.1. GET Method	26
4.2. POST Method	27
4.3. Success Responses	28
4.4. Error Responses	29
4.5. Viewshed Result – GET Method	29
4.6. Viewshed Result – POST Method	30
4.7. Viewshed Result - Success Responses	31
4.8. Viewshed Result - Error Responses	31
4.9. Asynchronous Processing	32
4.9.1 Asynchronous Status	32
4.9.2 Asynchronous Result	34

## 1. Terrain Sources

Provides a list data sources available to the Terrain Services. Each data source is given a unique identifier which is used as in the endpoint URL in the other Terrain Services calls.

<b>Endpoint URL</b>	<a href="https://api.intermap.com/api/raster">https://api.intermap.com/api/raster</a>
<b>Authentication</b>	Basic
<b>Methods</b>	GET, POST

### 1.1. GET Method

<b>URL Parameters</b>	<b>Name</b>	<b>Required</b>	<b>Description</b>	<b>Example</b>
	easting northing	No	Easting and northing coordinates of a point on the earth's surface. When used, only data sources containing the given point are returned, otherwise, all data sources are returned. If the crs parameter is specified, the coordinate units are determined by the crs. If no crs parameter is given, then the coordinates are in WGS84 Geographic decimal degrees (EPSG:4326).	easting=10 northing=50
	crs	No	Coordinate reference system (CRS) in format EPSG:identifier where identifier is the EPSG code for the given CRS.	crs=EPSG:4326
<b>Header Parameters</b>				
<b>Content</b>				
<b>Example Request</b>	<b>URL</b>	<a href="https://api.intermap.com/api/raster?easting=10&amp;northing=50&amp;crs=EPSG:4326">https://api.intermap.com/api/raster?easting=10&amp;northing=50&amp;crs=EPSG:4326</a>		
	<b>Header Parameters</b>			
	<b>Content</b>			

## 1.2. POST Method

<b>URL Parameters</b>							
<b>Header Parameters</b>	Content-Type: application/json						
<b>Content</b>	<p>If the content is empty, all data sources are returned.</p> <p>Request content is in GeoJSON format and contains a FeatureCollection. Each Feature within the FeatureCollection contains Point geometry. Only the data sources that contain at least one of the points are returned.</p> <p>The FeatureCollection may also contain a crs which is used to identify the Coordinate Reference System of the point coordinates. If no crs is given then WGS84 Geographic decimal degrees (EPSG:4326) is used.</p>						
<b>Example Request</b>	<table border="1"> <tr> <td><b>URL</b></td> <td><a href="https://api.intermap.com/api/raster">https://api.intermap.com/api/raster</a></td> </tr> <tr> <td><b>Header Parameters</b></td> <td>Content-Type: application/json</td> </tr> <tr> <td><b>Content</b></td> <td> <pre>{   "type": "FeatureCollection",   "crs": {     "type": "name",     "properties": {       "name": "EPSG:4326"     }   },   "features": [     {       "type": "Feature",       "geometry": {         "type": "Point",         "coordinates": [-105, 40]       }     },     {       "type": "Feature",       "geometry": {         "type": "Point",         "coordinates": [10, 50]       }     }   ] }</pre> </td> </tr> </table>	<b>URL</b>	<a href="https://api.intermap.com/api/raster">https://api.intermap.com/api/raster</a>	<b>Header Parameters</b>	Content-Type: application/json	<b>Content</b>	<pre>{   "type": "FeatureCollection",   "crs": {     "type": "name",     "properties": {       "name": "EPSG:4326"     }   },   "features": [     {       "type": "Feature",       "geometry": {         "type": "Point",         "coordinates": [-105, 40]       }     },     {       "type": "Feature",       "geometry": {         "type": "Point",         "coordinates": [10, 50]       }     }   ] }</pre>
	<b>URL</b>	<a href="https://api.intermap.com/api/raster">https://api.intermap.com/api/raster</a>					
	<b>Header Parameters</b>	Content-Type: application/json					
<b>Content</b>	<pre>{   "type": "FeatureCollection",   "crs": {     "type": "name",     "properties": {       "name": "EPSG:4326"     }   },   "features": [     {       "type": "Feature",       "geometry": {         "type": "Point",         "coordinates": [-105, 40]       }     },     {       "type": "Feature",       "geometry": {         "type": "Point",         "coordinates": [10, 50]       }     }   ] }</pre>						

## 1.3. Success Responses

<b>Code</b>	200
<b>Description</b>	Success – Response contains terrain sources content
<b>Content Type</b>	application/json
<b>Content Description</b>	The contents are returned as a GeoJSON FeatureCollection where each Feature in the FeatureCollection contains an “id” element which is the ID to use in other Terrain Services calls. Each Feature also contains a polygon geometry defining the bounds of the data source and some other properties.
<b>Content Example</b>	<pre>{   "type": "FeatureCollection",   "features": [     {       "type": "Feature",       "id": "NEXTMap-Europe_DTM", </pre>

```
"geometry": {
  "type": "Polygon",
  "coordinates": [
    [
      [
        -10.751979166666665,
        35.370687500000004
      ],
      [
        -10.751979166666665,
        60.88535416675661
      ],
      [
        19.0080208333333536,
        60.88535416675661
      ],
      [
        19.0080208333333536,
        35.370687500000004
      ],
      [
        -10.751979166666665,
        35.370687500000004
      ]
    ]
  ]
},
"properties": {
  "name": "NEXTMap-Europe_DTM",
  "remarks": null,
  "summary": "DTM - NEXTMap®Europe",
  "version": "3.3"
}
},
{
  "type": "Feature",
  "id": "NEXTMap-Europe_DSM",
  "geometry": {
    "type": "Polygon",
    "coordinates": [
      [
        [
          -10.751979166666665,
          35.370687500000004
        ],
        [
          -10.751979166666665,
          60.88535416675661
        ],
        [
          19.0080208333333536,
          60.88535416675661
        ],
        [
          19.0080208333333536,
          35.370687500000004
        ]
      ]
    ]
  }
}
```

```
        [
          -10.751979166666665,
          35.370687500000004
        ]
      ]
    },
    "properties": {
      "name": "NEXTMap-Europe_DSM",
      "remarks": null,
      "summary": "DSM - NEXTMap®Europe",
      "version": "3.3"
    }
  },
  {
    "type": "Feature",
    "id": "NEXTMap-World30_DEM",
    "geometry": {
      "type": "Polygon",
      "coordinates": [
        [
          [
            -179.99990000000003,
            -89.9999
          ],
          [
            -179.99990000000003,
            84.05347222212286
          ],
          [
            179.99990000000003,
            84.05347222212286
          ],
          [
            179.99990000000003,
            -89.9999
          ],
          [
            -179.99990000000003,
            -89.9999
          ]
        ]
      ]
    },
    "properties": {
      "name": "NEXTMap-World30_DEM",
      "remarks": null,
      "summary": "DEM30-NEXTMap®World30",
      "version": null
    }
  }
]
```

## 1.4. Error Responses

<b>Code</b>	401 UNAUTHORIZED
<b>Description</b>	Error when the authentication fails possibly due to incorrect login
<b>Content Type</b>	text/xml
<b>Content Example</b>	<pre>&lt;!DOCTYPE html PUBLIC "-//W3C//DTD XHTML 1.0 Strict//EN" "http://www.w3.org/TR/xhtml1/DTD/xhtml1-strict.dtd"&gt; &lt;html xmlns="http://www.w3.org/1999/xhtml"&gt; &lt;head&gt; &lt;meta http-equiv="Content-Type" content="text/html; charset=iso-8859-1"/&gt; &lt;title&gt;401 - Unauthorized: Access is denied due to invalid credentials.&lt;/title&gt; &lt;style type="text/css"&gt; &lt;!-- body{margin:0;font-size:.7em;font-family:Verdana, Arial, Helvetica, sans-serif;background:#EEEEEE;} fieldset{padding:0 15px 10px 15px;} h1{font-size:2.4em;margin:0;color:#FFF;} h2{font-size:1.7em;margin:0;color:#CC0000;} h3{font-size:1.2em;margin:10px 0 0 0;color:#000000;} #header{width:96%;margin:0 0 0 0;padding:6px 2% 6px 2%;font-family:"trebuchet MS", Verdana, sans-serif;color:#FFF; background-color:#555555;} #content{margin:0 0 0 2%;position:relative;} .content-container{background:#FFF;width:96%;margin-top:8px;padding:10px;position:relative;} --&gt; &lt;/style&gt; &lt;/head&gt; &lt;body&gt; &lt;div id="header"&gt;&lt;h1&gt;Server Error&lt;/h1&gt;&lt;/div&gt; &lt;div id="content"&gt; &lt;div class="content-container"&gt;&lt;fieldset&gt; &lt;h2&gt;401 - Unauthorized: Access is denied due to invalid credentials.&lt;/h2&gt; &lt;h3&gt;You do not have permission to view this directory or page using the credentials that you supplied.&lt;/h3&gt; &lt;/fieldset&gt;&lt;/div&gt; &lt;/div&gt; &lt;/body&gt; &lt;/html&gt;</pre>

<b>Code</b>	400
<b>Description</b>	Model is not valid. This may be due to specifying the parameters incorrectly.
<b>Content Type</b>	application/xml
<b>Content Example</b>	<pre>&lt;string&gt;Model is not valid. This error has been assigned an Incident ID of '66480-API2-TEST03-170605-193846'. Provide this Incident ID to customer support when you need assistance.&lt;/string&gt;</pre>

## 2. Terrain Values

Intermap's Values allows the user to quickly get the value (From any raster data set) at any geographic coordinate (assuming it is in the data set). This is very useful for analyzing data at specific locations. Intermap's values tool allows a list (batch) of points to be specified for running batch analysis. Examples include: getting the elevation height, risk information, flood depth, slope, etc.

Gets the values (elevations) of a set of points on a terrain data source.

<b>Endpoint URL</b>	https://api.intermap.com/api/raster/<Source ID>/values Where <Source ID> is a data source ID returned from a Terrain Sources call
<b>Authentication</b>	Basic
<b>Methods</b>	GET, POST

### 2.1. GET Method

<b>URL Parameters</b>	<table border="1"> <thead> <tr> <th>Name</th> <th>Required</th> <th>Description</th> <th>Example</th> </tr> </thead> <tbody> <tr> <td>easting</td> <td>Yes</td> <td rowspan="2">Easting and northing coordinates of a point for which to get the value for. If the crs parameter is specified, the coordinate units are determined by the crs. If no crs parameter is given, then the coordinates are in WGS84 Geographic decimal degrees (EPSG:4326).</td> <td>easting=10</td> </tr> <tr> <td>northing</td> <td></td> <td>northing=50</td> </tr> <tr> <td>crs</td> <td>No</td> <td>Coordinate reference system (CRS) in format EPSG:identifier where identifier is the EPSG code for the given CRS.</td> <td>crs=EPSG:4326</td> </tr> </tbody> </table>	Name	Required	Description	Example	easting	Yes	Easting and northing coordinates of a point for which to get the value for. If the crs parameter is specified, the coordinate units are determined by the crs. If no crs parameter is given, then the coordinates are in WGS84 Geographic decimal degrees (EPSG:4326).	easting=10	northing		northing=50	crs	No	Coordinate reference system (CRS) in format EPSG:identifier where identifier is the EPSG code for the given CRS.	crs=EPSG:4326
	Name	Required	Description	Example												
easting	Yes	Easting and northing coordinates of a point for which to get the value for. If the crs parameter is specified, the coordinate units are determined by the crs. If no crs parameter is given, then the coordinates are in WGS84 Geographic decimal degrees (EPSG:4326).	easting=10													
northing			northing=50													
crs	No	Coordinate reference system (CRS) in format EPSG:identifier where identifier is the EPSG code for the given CRS.	crs=EPSG:4326													
<b>Header Parameters</b>																
<b>Content</b>																
<b>Example Request</b>	<table border="1"> <tr> <td><b>URL</b></td> <td><a href="https://api.intermap.com/api/raster/NEXTMap-USA_DSM/values?easting=-105&amp;northing=40&amp;crs=EPSG:4326">https://api.intermap.com/api/raster/NEXTMap-USA_DSM/values?easting=-105&amp;northing=40&amp;crs=EPSG:4326</a></td> </tr> <tr> <td><b>Header Parameters</b></td> <td></td> </tr> </table>	<b>URL</b>	<a href="https://api.intermap.com/api/raster/NEXTMap-USA_DSM/values?easting=-105&amp;northing=40&amp;crs=EPSG:4326">https://api.intermap.com/api/raster/NEXTMap-USA_DSM/values?easting=-105&amp;northing=40&amp;crs=EPSG:4326</a>	<b>Header Parameters</b>												
	<b>URL</b>	<a href="https://api.intermap.com/api/raster/NEXTMap-USA_DSM/values?easting=-105&amp;northing=40&amp;crs=EPSG:4326">https://api.intermap.com/api/raster/NEXTMap-USA_DSM/values?easting=-105&amp;northing=40&amp;crs=EPSG:4326</a>														
<b>Header Parameters</b>																



	<b>Content</b>	
--	----------------	--

## 2.2. POST Method

<b>URL Parameters</b>							
<b>Header Parameters</b>	Content-Type: application/json						
<b>Content</b>	<p>Request content is in GeoJSON format and contains a FeatureCollection. Each Feature within the FeatureCollection contains Point geometry. The values (elevations) for all given points is returned.</p> <p>The FeatureCollection may also contain a crs which is used to identify the Coordinate Reference System of the point coordinates. If no crs is given then WGS84 Geographic decimal degrees (EPSG:4326) is used.</p>						
<b>Example Request</b>	<table border="1" style="width: 100%;"> <tr> <td style="width: 15%;"><b>URL</b></td> <td><a href="https://api.intermap.com/api/raster/NEXTMap-USA_DSM/values">https://api.intermap.com/api/raster/NEXTMap-USA_DSM/values</a></td> </tr> <tr> <td><b>Header Parameters</b></td> <td>Content-Type: application/json</td> </tr> <tr> <td><b>Content</b></td> <td> <pre>{   "type": "FeatureCollection",   "crs": {     "type": "name",     "properties": {       "name": "EPSG:4326"     }   },   "features": [     {       "type": "Feature",       "geometry": {         "type": "Point",         "coordinates": [-105, 40]       }     },     {       "type": "Feature",       "geometry": {         "type": "Point",         "coordinates": [10, 50]       }     }   ] }</pre> </td> </tr> </table>	<b>URL</b>	<a href="https://api.intermap.com/api/raster/NEXTMap-USA_DSM/values">https://api.intermap.com/api/raster/NEXTMap-USA_DSM/values</a>	<b>Header Parameters</b>	Content-Type: application/json	<b>Content</b>	<pre>{   "type": "FeatureCollection",   "crs": {     "type": "name",     "properties": {       "name": "EPSG:4326"     }   },   "features": [     {       "type": "Feature",       "geometry": {         "type": "Point",         "coordinates": [-105, 40]       }     },     {       "type": "Feature",       "geometry": {         "type": "Point",         "coordinates": [10, 50]       }     }   ] }</pre>
<b>URL</b>	<a href="https://api.intermap.com/api/raster/NEXTMap-USA_DSM/values">https://api.intermap.com/api/raster/NEXTMap-USA_DSM/values</a>						
<b>Header Parameters</b>	Content-Type: application/json						
<b>Content</b>	<pre>{   "type": "FeatureCollection",   "crs": {     "type": "name",     "properties": {       "name": "EPSG:4326"     }   },   "features": [     {       "type": "Feature",       "geometry": {         "type": "Point",         "coordinates": [-105, 40]       }     },     {       "type": "Feature",       "geometry": {         "type": "Point",         "coordinates": [10, 50]       }     }   ] }</pre>						

## 2.3. Success Responses

<b>Code</b>	200
<b>Description</b>	Success – Response contains requested values
<b>Content Type</b>	application/json
<b>Content Description</b>	The contents are returned as a GeoJSON FeatureCollection where each Feature in the FeatureCollection contains a point geometry matching the requested points and a “value” property containing the value from the data source at that point.
<b>Content Example</b>	<pre>{   "type": "FeatureCollection",   "features": [</pre>

```

{
  "type": "Feature",
  "geometry": {
    "type": "Point",
    "coordinates": [
      -105,
      40
    ]
  },
  "properties": {
    "value": 1589.68359
  }
},
{
  "type": "Feature",
  "geometry": {
    "type": "Point",
    "coordinates": [
      10,
      50
    ]
  },
  "properties": {
    "value": -10000
  }
}
]
}

```

<b>Code</b>	202
<b>Description</b>	Accepted – Processing will take a long time so an asynchronous job has been created
<b>Header Parameters</b>	<b>Location</b> – Contains a URL which is used in a GET call to get the status and result URL for the job (see <a href="#">Asynchronous Processing</a> )
<b>Content Type</b>	application/json
<b>Content Description</b>	The contents simply contain the word null because the desired URL is in the header rather than the contents
<b>Content Example</b>	null

## 2.4. Error Responses

<b>Code</b>	401 UNAUTHORIZED
<b>Description</b>	Error when the authentication fails possibly due to incorrect login
<b>Content Type</b>	text/xml
<b>Content Example</b>	<!DOCTYPE html PUBLIC "-//W3C//DTD XHTML 1.0 Strict//EN" "http://www.w3.org/TR/xhtml1/DTD/xhtml1-strict.dtd"> <html xmlns="http://www.w3.org/1999/xhtml"> <head> <meta http-equiv="Content-Type" content="text/html; charset=iso-8859-1"/> <title>401 - Unauthorized: Access is denied due to invalid credentials.</title> <style type="text/css"> <!-- body{margin:0;font-size:.7em;font-family:Verdana, Arial, Helvetica, sans-serif;background:#EEEEEE;} fieldset{padding:0 15px 10px 15px;} h1{font-size:2.4em;margin:0;color:#FFF;} h2{font-size:1.7em;margin:0;color:#CC0000;} h3{font-size:1.2em;margin:10px 0 0 0;color:#000000;} #header{width:96%;margin:0 0 0 0;padding:6px 2% 6px 2%;font-family:"trebuchet MS", Verdana, sans-serif;color:#FFF; background-color:#555555;} #content{margin:0 0 2%;position:relative;} .content-

```

container{background:#FFF;width:96%;margin-top:8px;padding:10px;position:relative;} --> </style> </head> <body>
<div id="header"><h1>Server Error</h1></div> <div id="content"> <div class="content-container"><fieldset>
<h2>401 - Unauthorized: Access is denied due to invalid credentials.</h2> <h3>You do not have permission to view
this directory or page using the credentials that you supplied.</h3> </fieldset></div> </div> </body> </html>

```

<b>Code</b>	400
<b>Description</b>	Model is not valid. This may be due to specifying the parameters or content incorrectly.
<b>Content Type</b>	application/xml
<b>Content Example</b>	<string>Model is not valid. This error has been assigned an Incident ID of '66480-API2-TEST03-170605-193846'. Provide this Incident ID to customer support when you need assistance.</string>

## 2.5. Asynchronous Processing

When a task will take a long time, it will be sent off for asynchronous processing rather than making the caller wait for a response. In this case, a response with a code of 202 is returned. This response contains a Location header parameter which is a URL for obtaining the status and when complete, the result.

## 2.6. Asynchronous Status

The asynchronous status is a GET method that allows the user to check the status of the asynchronous job, and when complete, it gives the URL for the result. It uses the same basic authentication as the other methods.

<b>URL Parameters</b>	None						
<b>Header Parameters</b>	None						
<b>Content</b>	None						
<b>Example Request</b>	<table border="1"> <tr> <td><b>URL</b></td> <td><a href="https://api-test.intermap.com/tasks/02237c3e-4f0e-e711-80c3-000d3a604bff/status">https://api-test.intermap.com/tasks/02237c3e-4f0e-e711-80c3-000d3a604bff/status</a></td> </tr> <tr> <td><b>Header Parameters</b></td> <td></td> </tr> <tr> <td><b>Content</b></td> <td></td> </tr> </table>	<b>URL</b>	<a href="https://api-test.intermap.com/tasks/02237c3e-4f0e-e711-80c3-000d3a604bff/status">https://api-test.intermap.com/tasks/02237c3e-4f0e-e711-80c3-000d3a604bff/status</a>	<b>Header Parameters</b>		<b>Content</b>	
<b>URL</b>	<a href="https://api-test.intermap.com/tasks/02237c3e-4f0e-e711-80c3-000d3a604bff/status">https://api-test.intermap.com/tasks/02237c3e-4f0e-e711-80c3-000d3a604bff/status</a>						
<b>Header Parameters</b>							
<b>Content</b>							
<b>Success Responses</b>	<table border="1"> <tr> <td><b>Code</b></td> <td>200</td> </tr> <tr> <td><b>Description</b></td> <td>Success – Status check is successful, but the job is still processing</td> </tr> <tr> <td><b>Content Type</b></td> <td>application/json</td> </tr> </table>	<b>Code</b>	200	<b>Description</b>	Success – Status check is successful, but the job is still processing	<b>Content Type</b>	application/json
<b>Code</b>	200						
<b>Description</b>	Success – Status check is successful, but the job is still processing						
<b>Content Type</b>	application/json						

	<table border="1"> <tr> <td><b>Content Description</b></td> <td>The contents are simple JSON with a "location" element echoing back the status URL and a "status" element that gives the current status of the processing.</td> </tr> <tr> <td><b>Content Example</b></td> <td>{   "location": "https://api-test.intermap.com/tasks/02237c3e-4f0e-e711-80c3-000d3a604bff/status",   "status": "processing" }</td> </tr> <tr> <td><b>Code</b></td> <td>303</td> </tr> <tr> <td><b>Description</b></td> <td>Redirect – Status check is successful and the job is complete</td> </tr> <tr> <td><b>Header Parameters</b></td> <td><b>Location</b> – URL that contains the result of the processing</td> </tr> <tr> <td><b>Content Type</b></td> <td>No Content</td> </tr> <tr> <td><b>Content Description</b></td> <td>There is no content</td> </tr> <tr> <td><b>Content Example</b></td> <td></td> </tr> </table>	<b>Content Description</b>	The contents are simple JSON with a "location" element echoing back the status URL and a "status" element that gives the current status of the processing.	<b>Content Example</b>	{ "location": "https://api-test.intermap.com/tasks/02237c3e-4f0e-e711-80c3-000d3a604bff/status", "status": "processing" }	<b>Code</b>	303	<b>Description</b>	Redirect – Status check is successful and the job is complete	<b>Header Parameters</b>	<b>Location</b> – URL that contains the result of the processing	<b>Content Type</b>	No Content	<b>Content Description</b>	There is no content	<b>Content Example</b>	
<b>Content Description</b>	The contents are simple JSON with a "location" element echoing back the status URL and a "status" element that gives the current status of the processing.																
<b>Content Example</b>	{ "location": "https://api-test.intermap.com/tasks/02237c3e-4f0e-e711-80c3-000d3a604bff/status", "status": "processing" }																
<b>Code</b>	303																
<b>Description</b>	Redirect – Status check is successful and the job is complete																
<b>Header Parameters</b>	<b>Location</b> – URL that contains the result of the processing																
<b>Content Type</b>	No Content																
<b>Content Description</b>	There is no content																
<b>Content Example</b>																	
<p><b>Failure Responses</b></p>	<table border="1"> <tr> <td><b>Code</b></td> <td>401 UNAUTHORIZED</td> </tr> <tr> <td><b>Description</b></td> <td>Error when the authentication fails possibly due to incorrect login</td> </tr> <tr> <td><b>Content Type</b></td> <td>text/xml</td> </tr> <tr> <td><b>Content Example</b></td> <td>&lt;!DOCTYPE html PUBLIC "-//W3C//DTD XHTML 1.0 Strict//EN" "http://www.w3.org/TR/xhtml1/DTD/xhtml1-strict.dtd"&gt; &lt;html xmlns="http://www.w3.org/1999/xhtml"&gt; &lt;head&gt; &lt;meta http-equiv="Content-Type" content="text/html; charset=iso-8859-1"/&gt; &lt;title&gt;401 - Unauthorized: Access is denied due to invalid credentials.&lt;/title&gt; &lt;style type="text/css"&gt; &lt;!-- body{margin:0;font-size:.7em;font-family:Verdana, Arial, Helvetica, sans-serif;background:#EEEEEE;} fieldset{padding:0 15px 10px 15px;} h1{font-size:2.4em;margin:0;color:#FFF;} h2{font-size:1.7em;margin:0;color:#CC0000;} h3{font-size:1.2em;margin:10px 0 0 0;color:#000000;} #header{width:96%;margin:0 0 0 0;padding:6px 2% 6px 2%;font-family:"trebuchet MS", Verdana, sans-serif;color:#FFF; background-color:#555555;} #content{margin:0 0 0 2%;position:relative;} .content-container{background:#FFF;width:96%;margin-top:8px;padding:10px;position:relative;} --&gt; &lt;/style&gt; &lt;/head&gt; &lt;body&gt; &lt;div id="header"&gt;&lt;h1&gt;Server Error&lt;/h1&gt;&lt;/div&gt; &lt;div id="content"&gt; &lt;div class="content-container"&gt;&lt;fieldset&gt; &lt;h2&gt;401 - Unauthorized: Access is denied due to invalid credentials.&lt;/h2&gt; &lt;h3&gt;You do not have permission to view this directory or page using the credentials that you supplied.&lt;/h3&gt; &lt;/fieldset&gt;&lt;/div&gt; &lt;/div&gt; &lt;/body&gt; &lt;/html&gt;</td> </tr> <tr> <td><b>Code</b></td> <td>400</td> </tr> <tr> <td><b>Description</b></td> <td>Model is not valid. This may be due to specifying the parameters or content incorrectly.</td> </tr> <tr> <td><b>Content Type</b></td> <td>application/xml</td> </tr> <tr> <td><b>Content Example</b></td> <td>&lt;string&gt;Model is not valid. This error has been assigned an Incident ID of '66480-API2-TEST03-170605-193846'. Provide this Incident ID to customer support when you need assistance.&lt;/string&gt;</td> </tr> </table>	<b>Code</b>	401 UNAUTHORIZED	<b>Description</b>	Error when the authentication fails possibly due to incorrect login	<b>Content Type</b>	text/xml	<b>Content Example</b>	<!DOCTYPE html PUBLIC "-//W3C//DTD XHTML 1.0 Strict//EN" "http://www.w3.org/TR/xhtml1/DTD/xhtml1-strict.dtd"> <html xmlns="http://www.w3.org/1999/xhtml"> <head> <meta http-equiv="Content-Type" content="text/html; charset=iso-8859-1"/> <title>401 - Unauthorized: Access is denied due to invalid credentials.</title> <style type="text/css"> <!-- body{margin:0;font-size:.7em;font-family:Verdana, Arial, Helvetica, sans-serif;background:#EEEEEE;} fieldset{padding:0 15px 10px 15px;} h1{font-size:2.4em;margin:0;color:#FFF;} h2{font-size:1.7em;margin:0;color:#CC0000;} h3{font-size:1.2em;margin:10px 0 0 0;color:#000000;} #header{width:96%;margin:0 0 0 0;padding:6px 2% 6px 2%;font-family:"trebuchet MS", Verdana, sans-serif;color:#FFF; background-color:#555555;} #content{margin:0 0 0 2%;position:relative;} .content-container{background:#FFF;width:96%;margin-top:8px;padding:10px;position:relative;} --> </style> </head> <body> <div id="header"><h1>Server Error</h1></div> <div id="content"> <div class="content-container"><fieldset> <h2>401 - Unauthorized: Access is denied due to invalid credentials.</h2> <h3>You do not have permission to view this directory or page using the credentials that you supplied.</h3> </fieldset></div> </div> </body> </html>	<b>Code</b>	400	<b>Description</b>	Model is not valid. This may be due to specifying the parameters or content incorrectly.	<b>Content Type</b>	application/xml	<b>Content Example</b>	<string>Model is not valid. This error has been assigned an Incident ID of '66480-API2-TEST03-170605-193846'. Provide this Incident ID to customer support when you need assistance.</string>
<b>Code</b>	401 UNAUTHORIZED																
<b>Description</b>	Error when the authentication fails possibly due to incorrect login																
<b>Content Type</b>	text/xml																
<b>Content Example</b>	<!DOCTYPE html PUBLIC "-//W3C//DTD XHTML 1.0 Strict//EN" "http://www.w3.org/TR/xhtml1/DTD/xhtml1-strict.dtd"> <html xmlns="http://www.w3.org/1999/xhtml"> <head> <meta http-equiv="Content-Type" content="text/html; charset=iso-8859-1"/> <title>401 - Unauthorized: Access is denied due to invalid credentials.</title> <style type="text/css"> <!-- body{margin:0;font-size:.7em;font-family:Verdana, Arial, Helvetica, sans-serif;background:#EEEEEE;} fieldset{padding:0 15px 10px 15px;} h1{font-size:2.4em;margin:0;color:#FFF;} h2{font-size:1.7em;margin:0;color:#CC0000;} h3{font-size:1.2em;margin:10px 0 0 0;color:#000000;} #header{width:96%;margin:0 0 0 0;padding:6px 2% 6px 2%;font-family:"trebuchet MS", Verdana, sans-serif;color:#FFF; background-color:#555555;} #content{margin:0 0 0 2%;position:relative;} .content-container{background:#FFF;width:96%;margin-top:8px;padding:10px;position:relative;} --> </style> </head> <body> <div id="header"><h1>Server Error</h1></div> <div id="content"> <div class="content-container"><fieldset> <h2>401 - Unauthorized: Access is denied due to invalid credentials.</h2> <h3>You do not have permission to view this directory or page using the credentials that you supplied.</h3> </fieldset></div> </div> </body> </html>																
<b>Code</b>	400																
<b>Description</b>	Model is not valid. This may be due to specifying the parameters or content incorrectly.																
<b>Content Type</b>	application/xml																
<b>Content Example</b>	<string>Model is not valid. This error has been assigned an Incident ID of '66480-API2-TEST03-170605-193846'. Provide this Incident ID to customer support when you need assistance.</string>																

## 2.7. Asynchronous Result

The asynchronous result is a GET method that simply gets back the result from an asynchronous processing job with the URL given in the asynchronous status call.

<b>URL Parameters</b>	None										
<b>Header Parameters</b>	None										
<b>Content</b>	None										
<b>Example Request</b>	<table border="1"> <tr> <td><b>URL</b></td> <td><a href="https://api.intermap.com/tasks/02237c3e-4f0e-e711-80c3-000d3a604bff">https://api.intermap.com/tasks/02237c3e-4f0e-e711-80c3-000d3a604bff</a></td> </tr> <tr> <td><b>Header Parameters</b></td> <td></td> </tr> <tr> <td><b>Content</b></td> <td></td> </tr> </table>	<b>URL</b>	<a href="https://api.intermap.com/tasks/02237c3e-4f0e-e711-80c3-000d3a604bff">https://api.intermap.com/tasks/02237c3e-4f0e-e711-80c3-000d3a604bff</a>	<b>Header Parameters</b>		<b>Content</b>					
<b>URL</b>	<a href="https://api.intermap.com/tasks/02237c3e-4f0e-e711-80c3-000d3a604bff">https://api.intermap.com/tasks/02237c3e-4f0e-e711-80c3-000d3a604bff</a>										
<b>Header Parameters</b>											
<b>Content</b>											
<b>Success Responses</b>	<table border="1"> <tr> <td><b>Code</b></td> <td>200</td> </tr> <tr> <td><b>Description</b></td> <td>Success – Result returned</td> </tr> <tr> <td><b>Content Type</b></td> <td>application/json</td> </tr> <tr> <td><b>Content Description</b></td> <td>The contents are the same as if they were returned without an asynchronous call. They contain a GeoJSON FeatureCollection where each Feature in the FeatureCollection contains a point geometry matching the requested points and a “value” property containing the value from the data source at that point.</td> </tr> <tr> <td><b>Content Example</b></td> <td> <pre>{   "type": "FeatureCollection",   "features": [     {       "type": "Feature",       "geometry": {         "type": "Point",         "coordinates": [           -105,           40         ]       },       "properties": {         "value": 1589.68359       }     },     {       "type": "Feature",</pre> </td> </tr> </table>	<b>Code</b>	200	<b>Description</b>	Success – Result returned	<b>Content Type</b>	application/json	<b>Content Description</b>	The contents are the same as if they were returned without an asynchronous call. They contain a GeoJSON FeatureCollection where each Feature in the FeatureCollection contains a point geometry matching the requested points and a “value” property containing the value from the data source at that point.	<b>Content Example</b>	<pre>{   "type": "FeatureCollection",   "features": [     {       "type": "Feature",       "geometry": {         "type": "Point",         "coordinates": [           -105,           40         ]       },       "properties": {         "value": 1589.68359       }     },     {       "type": "Feature",</pre>
<b>Code</b>	200										
<b>Description</b>	Success – Result returned										
<b>Content Type</b>	application/json										
<b>Content Description</b>	The contents are the same as if they were returned without an asynchronous call. They contain a GeoJSON FeatureCollection where each Feature in the FeatureCollection contains a point geometry matching the requested points and a “value” property containing the value from the data source at that point.										
<b>Content Example</b>	<pre>{   "type": "FeatureCollection",   "features": [     {       "type": "Feature",       "geometry": {         "type": "Point",         "coordinates": [           -105,           40         ]       },       "properties": {         "value": 1589.68359       }     },     {       "type": "Feature",</pre>										

```

        "geometry": {
            "type": "Point",
            "coordinates": [
                10,
                50
            ]
        },
        "properties": {
            "value": -10000
        }
    }
}
    ]
}

```

## Failure Responses

<b>Code</b>	401 UNAUTHORIZED
<b>Description</b>	Error when the authentication fails possibly due to incorrect login
<b>Content Type</b>	text/xml
<b>Content Example</b>	<pre> &lt;!DOCTYPE html PUBLIC "-//W3C//DTD XHTML 1.0 Strict//EN" "http://www.w3.org/TR/xhtml1/DTD/xhtml1-strict.dtd"&gt; &lt;html xmlns="http://www.w3.org/1999/xhtml"&gt; &lt;head&gt; &lt;meta http-equiv="Content-Type" content="text/html; charset=iso-8859-1"/&gt; &lt;title&gt;401 - Unauthorized: Access is denied due to invalid credentials.&lt;/title&gt; &lt;style type="text/css"&gt; &lt;!-- body{margin:0;font- size:.7em;font-family:Verdana, Arial, Helvetica, sans-serif;background:#EEEEEE;} fieldset{padding:0 15px 10px 15px;} h1{font-size:2.4em;margin:0;color:#FFF;} h2{font- size:1.7em;margin:0;color:#CC0000;} h3{font-size:1.2em;margin:10px 0 0 0;color:#000000;} #header{width:96%;margin:0 0 0 0;padding:6px 2% 6px 2%;font-family:"trebuchet MS", Verdana, sans-serif;color:#FFF; background-color:#555555;} #content{margin:0 0 0 2%;position:relative;} .content-container{background:#FFF;width:96%;margin- top:8px;padding:10px;position:relative;} --&gt; &lt;/style&gt; &lt;/head&gt; &lt;body&gt; &lt;div id="header"&gt;&lt;h1&gt;Server Error&lt;/h1&gt;&lt;/div&gt; &lt;div id="content"&gt; &lt;div class="content- container"&gt;&lt;fieldset&gt; &lt;h2&gt;401 - Unauthorized: Access is denied due to invalid credentials.&lt;/h2&gt; &lt;h3&gt;You do not have permission to view this directory or page using the credentials that you supplied.&lt;/h3&gt; &lt;/fieldset&gt;&lt;/div&gt; &lt;/div&gt; &lt;/body&gt; &lt;/html&gt; </pre>
<b>Code</b>	400
<b>Description</b>	Model is not valid. This may be due to specifying the parameters or content incorrectly.
<b>Content Type</b>	application/xml
<b>Content Example</b>	<pre> &lt;string&gt;Model is not valid. This error has been assigned an Incident ID of '66480-API2- TEST03-170605-193846'. Provide this Incident ID to customer support when you need assistance.&lt;/string&gt; </pre>

### 3. Terrain Profile

A terrain profile is a set of points along a straight line from one location to another. It is called a profile, since it is typically used on elevation to create an elevation profile or cross section. Intermap's terrain profile allows the user to specify the number of steps (samples) between the start and end points required. Profiles are often plotted as shown in the example below.



Gets a profile between two points on a terrain data source.

<b>Endpoint URL</b>	https://api.intermap.com/api/raster/<Source ID>/profile Where <Source ID> is a data source ID returned from a Terrain Sources call
<b>Authentication</b>	Basic
<b>Methods</b>	GET, POST

#### 3.1. GET Method

URL Parameters	Name	Required	Description	Example
	eastingStart	Yes	Easting and northing coordinates of the start point for the profile. If the crs parameter is specified, the coordinate units are determined by the crs. If no crs parameter is given, then	eastingStart=-105 northingStart=40

	<p>the coordinates are in WGS84 Geographic decimal degrees (EPSG:4326).</p>								
eastingEnd northingEnd	Yes	Easting and northing coordinates of the end point for the profile. If the crs parameter is specified, the coordinate units are determined by the crs. If no crs parameter is given, then the coordinates are in WGS84 Geographic decimal degrees (EPSG:4326).	eastingEnd=-105.01 northingEnd=40.01						
step	Yes	The sampling step size along the profile between the start and end points. The value is in meters.	step=100						
crs	No	Coordinate reference system (CRS) for the input coordinates in format EPSG:identifier where identifier is the EPSG code for the given CRS.	crs=EPSG:4326						
<b>Header Parameters</b>									
<b>Content</b>									
<b>Example Request</b>	<table border="1"> <tr> <td>URL</td> <td><a href="https://api.intermap.com/api/raster/NEXTMap-USA_DSM/profile?eastingStart=-105&amp;northingStart=40&amp;eastingEnd=-105.01&amp;northingEnd=40.01&amp;step=500&amp;crs=EPSG:4326">https://api.intermap.com/api/raster/NEXTMap-USA_DSM/profile?eastingStart=-105&amp;northingStart=40&amp;eastingEnd=-105.01&amp;northingEnd=40.01&amp;step=500&amp;crs=EPSG:4326</a></td> </tr> <tr> <td>Header Parameters</td> <td></td> </tr> <tr> <td>Content</td> <td></td> </tr> </table>			URL	<a href="https://api.intermap.com/api/raster/NEXTMap-USA_DSM/profile?eastingStart=-105&amp;northingStart=40&amp;eastingEnd=-105.01&amp;northingEnd=40.01&amp;step=500&amp;crs=EPSG:4326">https://api.intermap.com/api/raster/NEXTMap-USA_DSM/profile?eastingStart=-105&amp;northingStart=40&amp;eastingEnd=-105.01&amp;northingEnd=40.01&amp;step=500&amp;crs=EPSG:4326</a>	Header Parameters		Content	
URL	<a href="https://api.intermap.com/api/raster/NEXTMap-USA_DSM/profile?eastingStart=-105&amp;northingStart=40&amp;eastingEnd=-105.01&amp;northingEnd=40.01&amp;step=500&amp;crs=EPSG:4326">https://api.intermap.com/api/raster/NEXTMap-USA_DSM/profile?eastingStart=-105&amp;northingStart=40&amp;eastingEnd=-105.01&amp;northingEnd=40.01&amp;step=500&amp;crs=EPSG:4326</a>								
Header Parameters									
Content									

### 3.2. POST Method

<b>URL Parameters</b>	
-----------------------	--



<b>Header Parameters</b>	Content-Type: application/json						
<b>Content</b>	Request content is in GeoJSON format and contains a FeatureCollection. There are two Features within the FeatureCollection which specify the start and end point of the profile. There is also a “step” property in the FeatureCollection that identifies the sampling step size in meters along the profile between the start and end points. The FeatureCollection may also contain a crs which is used to identify the Coordinate Reference System of the point coordinates. If no crs is given then WGS84 Geographic decimal degrees (EPSG:4326) is used.						
<b>Example Request</b>	<table border="1"> <tr> <td data-bbox="373 636 578 684"><b>URL</b></td> <td data-bbox="578 636 1502 684"><a href="https://api.intermap.com/api/raster/NEXMap-USA_DSM/profile">https://api.intermap.com/api/raster/NEXMap-USA_DSM/profile</a></td> </tr> <tr> <td data-bbox="373 684 578 758"><b>Header Parameters</b></td> <td data-bbox="578 684 1502 758">Content-Type: application/json</td> </tr> <tr> <td data-bbox="373 758 578 1583"><b>Content</b></td> <td data-bbox="578 758 1502 1583"> <pre>{   "type": "FeatureCollection",   "crs": {     "type": "name",     "properties": {       "name": "EPSG:4326"     }   },   "features": [     {       "type": "Feature",       "geometry": {         "type": "Point",         "coordinates": [ -105, 40 ]       }     },     {       "type": "Feature",       "geometry": {         "type": "Point",         "coordinates": [ -105.01, 40.01 ]       }     }   ],   "properties": {     "step": 500   } }</pre> </td> </tr> </table>	<b>URL</b>	<a href="https://api.intermap.com/api/raster/NEXMap-USA_DSM/profile">https://api.intermap.com/api/raster/NEXMap-USA_DSM/profile</a>	<b>Header Parameters</b>	Content-Type: application/json	<b>Content</b>	<pre>{   "type": "FeatureCollection",   "crs": {     "type": "name",     "properties": {       "name": "EPSG:4326"     }   },   "features": [     {       "type": "Feature",       "geometry": {         "type": "Point",         "coordinates": [ -105, 40 ]       }     },     {       "type": "Feature",       "geometry": {         "type": "Point",         "coordinates": [ -105.01, 40.01 ]       }     }   ],   "properties": {     "step": 500   } }</pre>
<b>URL</b>	<a href="https://api.intermap.com/api/raster/NEXMap-USA_DSM/profile">https://api.intermap.com/api/raster/NEXMap-USA_DSM/profile</a>						
<b>Header Parameters</b>	Content-Type: application/json						
<b>Content</b>	<pre>{   "type": "FeatureCollection",   "crs": {     "type": "name",     "properties": {       "name": "EPSG:4326"     }   },   "features": [     {       "type": "Feature",       "geometry": {         "type": "Point",         "coordinates": [ -105, 40 ]       }     },     {       "type": "Feature",       "geometry": {         "type": "Point",         "coordinates": [ -105.01, 40.01 ]       }     }   ],   "properties": {     "step": 500   } }</pre>						

### 3.3. Success Responses

<b>Code</b>	200
<b>Description</b>	Success – Response contains requested profile
<b>Content Type</b>	application/json
<b>Content Description</b>	The contents are returned as a GeoJSON FeatureCollection where each Feature in the FeatureCollection is a point along the profile which has the point’s geometry along with a

	<p>“distance” property which gives the distance in meters from the previous point in the profile and a “value” property which is the value (elevation) of the terrain data source at that point.</p>
<b>Content Example</b>	<pre>{   "type": "FeatureCollection",   "features": [     {       "type": "Feature",       "geometry": {         "type": "Point",         "coordinates": [           -105,           40         ]       },       "properties": {         "distance": 0,         "value": 1589.68359       }     },     {       "type": "Feature",       "geometry": {         "type": "Point",         "coordinates": [           -105.00356929493735,           40.003569770806926         ]       },       "properties": {         "distance": 500,         "value": 1601.67566       }     },     {       "type": "Feature",       "geometry": {         "type": "Point",         "coordinates": [           -105.00713896168041,           40.00713938952522         ]       },       "properties": {         "distance": 500,         "value": 1610.09192       }     },     {       "type": "Feature",       "geometry": {         "type": "Point",         "coordinates": [           -105.01,           40.01         ]       },       "properties": {         "distance": 500,         "value": 1610.09192       }     }   ] }</pre>

	<pre>                 "properties": {                   "distance": 400.70546112401234,                   "value": 1599.65173                 }               }             ]           }         </pre>
--	----------------------------------------------------------------------------------------------------------------------------------------------------------------------------------------------------------

<b>Code</b>	202
<b>Description</b>	Accepted – Processing will take a long time so an asynchronous job has been created
<b>Header Parameters</b>	<b>Location</b> – Contains a URL which is used in a GET call to get the status and result URL for the job (see <a href="#">Asynchronous Processing</a> )
<b>Content Type</b>	application/json
<b>Content Description</b>	The contents simply contain the word null because the desired URL is in the header rather than the contents
<b>Content Example</b>	null

### 3.4. Error Responses

<b>Code</b>	401 UNAUTHORIZED
<b>Description</b>	Error when the authentication fails possibly due to incorrect login
<b>Content Type</b>	text/xml
<b>Content Example</b>	<pre> &lt;!DOCTYPE html PUBLIC "-//W3C//DTD XHTML 1.0 Strict//EN" "http://www.w3.org/TR/xhtml1/DTD/xhtml1-strict.dtd"&gt; &lt;html xmlns="http://www.w3.org/1999/xhtml"&gt; &lt;head&gt; &lt;meta http-equiv="Content-Type" content="text/html; charset=iso-8859-1"/&gt; &lt;title&gt;401 - Unauthorized: Access is denied due to invalid credentials.&lt;/title&gt; &lt;style type="text/css"&gt; &lt;!-- body{margin:0;font-size:.7em;font-family:Verdana, Arial, Helvetica, sans-serif;background:#EEEEEE;} fieldset{padding:0 15px 10px 15px;} h1{font-size:2.4em;margin:0;color:#FFF;} h2{font-size:1.7em;margin:0;color:#CC0000;} h3{font-size:1.2em;margin:10px 0 0 0;color:#000000;} #header{width:96%;margin:0 0 0;padding:6px 2% 6px 2%;font-family:"trebuchet MS", Verdana, sans-serif;color:#FFF; background-color:#555555;} #content{margin:0 0 2%;position:relative;} .content-container{background:#FFF;width:96%;margin-top:8px;padding:10px;position:relative;} --&gt; &lt;/style&gt; &lt;/head&gt; &lt;body&gt; &lt;div id="header"&gt;&lt;h1&gt;Server Error&lt;/h1&gt;&lt;/div&gt; &lt;div id="content"&gt; &lt;div class="content-container"&gt;&lt;fieldset&gt; &lt;h2&gt;401 - Unauthorized: Access is denied due to invalid credentials.&lt;/h2&gt; &lt;h3&gt;You do not have permission to view this directory or page using the credentials that you supplied.&lt;/h3&gt; &lt;/fieldset&gt;&lt;/div&gt; &lt;/div&gt; &lt;/body&gt; &lt;/html&gt; </pre>

<b>Code</b>	400
<b>Description</b>	Model is not valid. This may be due to specifying the parameters or content incorrectly.
<b>Content Type</b>	application/xml
<b>Content Example</b>	<pre> &lt;string&gt;Model is not valid. This error has been assigned an Incident ID of '66480-API2-TEST03-170605-193846'. Provide this Incident ID to customer support when you need assistance.&lt;/string&gt; </pre>

### 3.5. Asynchronous Processing

When a task will take a long time, it will be sent off for asynchronous processing rather than making the caller wait for a response. In this case, a response with a code of 202 is returned. This response contains a Location header parameter which is a URL for obtaining the status and when complete, the result.

The asynchronous status is a GET method that allows the user to check the status of the asynchronous job, and when complete, it gives the URL for the result. It uses the same basic authentication as the other methods.

<b>URL Parameters</b>	None																
<b>Header Parameters</b>	None																
<b>Content</b>	None																
<b>Example Request</b>	<table border="1"> <tr> <td><b>URL</b></td> <td><a href="https://api-test.intermap.com/tasks/02237c3e-4f0e-e711-80c3-000d3a604bff/status">https://api-test.intermap.com/tasks/02237c3e-4f0e-e711-80c3-000d3a604bff/status</a></td> </tr> <tr> <td><b>Header Parameters</b></td> <td></td> </tr> <tr> <td><b>Content</b></td> <td></td> </tr> </table>	<b>URL</b>	<a href="https://api-test.intermap.com/tasks/02237c3e-4f0e-e711-80c3-000d3a604bff/status">https://api-test.intermap.com/tasks/02237c3e-4f0e-e711-80c3-000d3a604bff/status</a>	<b>Header Parameters</b>		<b>Content</b>											
<b>URL</b>	<a href="https://api-test.intermap.com/tasks/02237c3e-4f0e-e711-80c3-000d3a604bff/status">https://api-test.intermap.com/tasks/02237c3e-4f0e-e711-80c3-000d3a604bff/status</a>																
<b>Header Parameters</b>																	
<b>Content</b>																	
<b>Success Responses</b>	<table border="1"> <tr> <td><b>Code</b></td> <td>200</td> </tr> <tr> <td><b>Description</b></td> <td>Success – Status check is successful, but the job is still processing</td> </tr> <tr> <td><b>Content Type</b></td> <td>application/json</td> </tr> <tr> <td><b>Content Description</b></td> <td>The contents are simple JSON with a “location” element echoing back the status URL and a “status” element that gives the current status of the processing.</td> </tr> <tr> <td><b>Content Example</b></td> <td> <pre>{   "location": "https://api-test.intermap.com/tasks/02237c3e-4f0e-e711-80c3-000d3a604bff/status",   "status": "processing" }</pre> </td> </tr> <tr> <td><b>Code</b></td> <td>303</td> </tr> <tr> <td><b>Description</b></td> <td>Redirect – Status check is successful and the job is complete</td> </tr> <tr> <td><b>Header Parameters</b></td> <td><b>Location</b> – URL that contains the result of the processing</td> </tr> </table>	<b>Code</b>	200	<b>Description</b>	Success – Status check is successful, but the job is still processing	<b>Content Type</b>	application/json	<b>Content Description</b>	The contents are simple JSON with a “location” element echoing back the status URL and a “status” element that gives the current status of the processing.	<b>Content Example</b>	<pre>{   "location": "https://api-test.intermap.com/tasks/02237c3e-4f0e-e711-80c3-000d3a604bff/status",   "status": "processing" }</pre>	<b>Code</b>	303	<b>Description</b>	Redirect – Status check is successful and the job is complete	<b>Header Parameters</b>	<b>Location</b> – URL that contains the result of the processing
<b>Code</b>	200																
<b>Description</b>	Success – Status check is successful, but the job is still processing																
<b>Content Type</b>	application/json																
<b>Content Description</b>	The contents are simple JSON with a “location” element echoing back the status URL and a “status” element that gives the current status of the processing.																
<b>Content Example</b>	<pre>{   "location": "https://api-test.intermap.com/tasks/02237c3e-4f0e-e711-80c3-000d3a604bff/status",   "status": "processing" }</pre>																
<b>Code</b>	303																
<b>Description</b>	Redirect – Status check is successful and the job is complete																
<b>Header Parameters</b>	<b>Location</b> – URL that contains the result of the processing																

	<table border="1"> <tr> <td><b>Content Type</b></td> <td>No Content</td> </tr> <tr> <td><b>Content Description</b></td> <td>There is no content</td> </tr> <tr> <td><b>Content Example</b></td> <td></td> </tr> </table>	<b>Content Type</b>	No Content	<b>Content Description</b>	There is no content	<b>Content Example</b>											
<b>Content Type</b>	No Content																
<b>Content Description</b>	There is no content																
<b>Content Example</b>																	
<b>Failure Responses</b>	<table border="1"> <tr> <td><b>Code</b></td> <td>401 UNAUTHORIZED</td> </tr> <tr> <td><b>Description</b></td> <td>Error when the authentication fails possibly due to incorrect login</td> </tr> <tr> <td><b>Content Type</b></td> <td>text/xml</td> </tr> <tr> <td><b>Content Example</b></td> <td> <pre>&lt;!DOCTYPE html PUBLIC "-//W3C//DTD XHTML 1.0 Strict//EN" "http://www.w3.org/TR/xhtml1/DTD/xhtml1-strict.dtd"&gt; &lt;html xmlns="http://www.w3.org/1999/xhtml"&gt; &lt;head&gt; &lt;meta http-equiv="Content-Type" content="text/html; charset=iso-8859-1"/&gt; &lt;title&gt;401 - Unauthorized: Access is denied due to invalid credentials.&lt;/title&gt; &lt;style type="text/css"&gt; &lt;!-- body{margin:0;font- size:.7em;font-family:Verdana, Arial, Helvetica, sans-serif;background:#EEEEEE;} fieldset{padding:0 15px 10px 15px;} h1{font-size:2.4em;margin:0;color:#FFF;} h2{font- size:1.7em;margin:0;color:#CC0000;} h3{font-size:1.2em;margin:10px 0 0 0;color:#000000;} #header{width:96%;margin:0 0 0 0;padding:6px 2% 6px 2%;font-family:"trebuchet MS", Verdana, sans-serif;color:#FFF; background-color:#555555;} #content{margin:0 0 0 2%;position:relative;} .content-container{background:#FFF;width:96%;margin- top:8px;padding:10px;position:relative;} --&gt; &lt;/style&gt; &lt;/head&gt; &lt;body&gt; &lt;div id="header"&gt;&lt;h1&gt;Server Error&lt;/h1&gt;&lt;/div&gt; &lt;div id="content"&gt; &lt;div class="content- container"&gt;&lt;fieldset&gt; &lt;h2&gt;401 - Unauthorized: Access is denied due to invalid credentials.&lt;/h2&gt; &lt;h3&gt;You do not have permission to view this directory or page using the credentials that you supplied.&lt;/h3&gt; &lt;/fieldset&gt;&lt;/div&gt; &lt;/div&gt; &lt;/body&gt; &lt;/html&gt;</pre> </td> </tr> <tr> <td><b>Code</b></td> <td>400</td> </tr> <tr> <td><b>Description</b></td> <td>Model is not valid. This may be due to specifying the parameters or content incorrectly.</td> </tr> <tr> <td><b>Content Type</b></td> <td>application/xml</td> </tr> <tr> <td><b>Content Example</b></td> <td> <pre>&lt;string&gt;Model is not valid. This error has been assigned an Incident ID of '66480-API2- TEST03-170605-193846'. Provide this Incident ID to customer support when you need assistance.&lt;/string&gt;</pre> </td> </tr> </table>	<b>Code</b>	401 UNAUTHORIZED	<b>Description</b>	Error when the authentication fails possibly due to incorrect login	<b>Content Type</b>	text/xml	<b>Content Example</b>	<pre>&lt;!DOCTYPE html PUBLIC "-//W3C//DTD XHTML 1.0 Strict//EN" "http://www.w3.org/TR/xhtml1/DTD/xhtml1-strict.dtd"&gt; &lt;html xmlns="http://www.w3.org/1999/xhtml"&gt; &lt;head&gt; &lt;meta http-equiv="Content-Type" content="text/html; charset=iso-8859-1"/&gt; &lt;title&gt;401 - Unauthorized: Access is denied due to invalid credentials.&lt;/title&gt; &lt;style type="text/css"&gt; &lt;!-- body{margin:0;font- size:.7em;font-family:Verdana, Arial, Helvetica, sans-serif;background:#EEEEEE;} fieldset{padding:0 15px 10px 15px;} h1{font-size:2.4em;margin:0;color:#FFF;} h2{font- size:1.7em;margin:0;color:#CC0000;} h3{font-size:1.2em;margin:10px 0 0 0;color:#000000;} #header{width:96%;margin:0 0 0 0;padding:6px 2% 6px 2%;font-family:"trebuchet MS", Verdana, sans-serif;color:#FFF; background-color:#555555;} #content{margin:0 0 0 2%;position:relative;} .content-container{background:#FFF;width:96%;margin- top:8px;padding:10px;position:relative;} --&gt; &lt;/style&gt; &lt;/head&gt; &lt;body&gt; &lt;div id="header"&gt;&lt;h1&gt;Server Error&lt;/h1&gt;&lt;/div&gt; &lt;div id="content"&gt; &lt;div class="content- container"&gt;&lt;fieldset&gt; &lt;h2&gt;401 - Unauthorized: Access is denied due to invalid credentials.&lt;/h2&gt; &lt;h3&gt;You do not have permission to view this directory or page using the credentials that you supplied.&lt;/h3&gt; &lt;/fieldset&gt;&lt;/div&gt; &lt;/div&gt; &lt;/body&gt; &lt;/html&gt;</pre>	<b>Code</b>	400	<b>Description</b>	Model is not valid. This may be due to specifying the parameters or content incorrectly.	<b>Content Type</b>	application/xml	<b>Content Example</b>	<pre>&lt;string&gt;Model is not valid. This error has been assigned an Incident ID of '66480-API2- TEST03-170605-193846'. Provide this Incident ID to customer support when you need assistance.&lt;/string&gt;</pre>
<b>Code</b>	401 UNAUTHORIZED																
<b>Description</b>	Error when the authentication fails possibly due to incorrect login																
<b>Content Type</b>	text/xml																
<b>Content Example</b>	<pre>&lt;!DOCTYPE html PUBLIC "-//W3C//DTD XHTML 1.0 Strict//EN" "http://www.w3.org/TR/xhtml1/DTD/xhtml1-strict.dtd"&gt; &lt;html xmlns="http://www.w3.org/1999/xhtml"&gt; &lt;head&gt; &lt;meta http-equiv="Content-Type" content="text/html; charset=iso-8859-1"/&gt; &lt;title&gt;401 - Unauthorized: Access is denied due to invalid credentials.&lt;/title&gt; &lt;style type="text/css"&gt; &lt;!-- body{margin:0;font- size:.7em;font-family:Verdana, Arial, Helvetica, sans-serif;background:#EEEEEE;} fieldset{padding:0 15px 10px 15px;} h1{font-size:2.4em;margin:0;color:#FFF;} h2{font- size:1.7em;margin:0;color:#CC0000;} h3{font-size:1.2em;margin:10px 0 0 0;color:#000000;} #header{width:96%;margin:0 0 0 0;padding:6px 2% 6px 2%;font-family:"trebuchet MS", Verdana, sans-serif;color:#FFF; background-color:#555555;} #content{margin:0 0 0 2%;position:relative;} .content-container{background:#FFF;width:96%;margin- top:8px;padding:10px;position:relative;} --&gt; &lt;/style&gt; &lt;/head&gt; &lt;body&gt; &lt;div id="header"&gt;&lt;h1&gt;Server Error&lt;/h1&gt;&lt;/div&gt; &lt;div id="content"&gt; &lt;div class="content- container"&gt;&lt;fieldset&gt; &lt;h2&gt;401 - Unauthorized: Access is denied due to invalid credentials.&lt;/h2&gt; &lt;h3&gt;You do not have permission to view this directory or page using the credentials that you supplied.&lt;/h3&gt; &lt;/fieldset&gt;&lt;/div&gt; &lt;/div&gt; &lt;/body&gt; &lt;/html&gt;</pre>																
<b>Code</b>	400																
<b>Description</b>	Model is not valid. This may be due to specifying the parameters or content incorrectly.																
<b>Content Type</b>	application/xml																
<b>Content Example</b>	<pre>&lt;string&gt;Model is not valid. This error has been assigned an Incident ID of '66480-API2- TEST03-170605-193846'. Provide this Incident ID to customer support when you need assistance.&lt;/string&gt;</pre>																

The asynchronous result is a GET method that simply gets back the result from an asynchronous processing job with the URL given in the asynchronous status call.

<b>URL Parameters</b>	None
-----------------------	------

<b>Header Parameters</b>	None										
<b>Content</b>	None										
<b>Example Request</b>	<table border="1"> <tr> <td data-bbox="386 485 581 558"><b>URL</b></td> <td data-bbox="581 485 1484 558"><a href="https://api.intermap.com/tasks/02237c3e-4f0e-e711-80c3-000d3a604bff">https://api.intermap.com/tasks/02237c3e-4f0e-e711-80c3-000d3a604bff</a></td> </tr> <tr> <td data-bbox="386 558 581 632"><b>Header Parameters</b></td> <td data-bbox="581 558 1484 632"></td> </tr> <tr> <td data-bbox="386 632 581 667"><b>Content</b></td> <td data-bbox="581 632 1484 667"></td> </tr> </table>	<b>URL</b>	<a href="https://api.intermap.com/tasks/02237c3e-4f0e-e711-80c3-000d3a604bff">https://api.intermap.com/tasks/02237c3e-4f0e-e711-80c3-000d3a604bff</a>	<b>Header Parameters</b>		<b>Content</b>					
<b>URL</b>	<a href="https://api.intermap.com/tasks/02237c3e-4f0e-e711-80c3-000d3a604bff">https://api.intermap.com/tasks/02237c3e-4f0e-e711-80c3-000d3a604bff</a>										
<b>Header Parameters</b>											
<b>Content</b>											
<b>Success Responses</b>	<table border="1"> <tr> <td data-bbox="386 703 558 739"><b>Code</b></td> <td data-bbox="558 703 1484 739">200</td> </tr> <tr> <td data-bbox="386 739 558 774"><b>Description</b></td> <td data-bbox="558 739 1484 774">Success – Result returned</td> </tr> <tr> <td data-bbox="386 774 558 848"><b>Content Type</b></td> <td data-bbox="558 774 1484 848">application/json</td> </tr> <tr> <td data-bbox="386 848 558 1066"><b>Content Description</b></td> <td data-bbox="558 848 1484 1066">The contents are the same as if they were returned without an asynchronous call. They contain a GeoJSON FeatureCollection where each Feature in the FeatureCollection is a point along the profile which has the point’s geometry along with a “distance” property which gives the distance in meters from the previous point in the profile and a “value” property which is the value (elevation) of the terrain data source at that point.</td> </tr> <tr> <td data-bbox="386 1066 558 1881"><b>Content Example</b></td> <td data-bbox="558 1066 1484 1881"> <pre> {   "type": "FeatureCollection",   "features": [     {       "type": "Feature",       "geometry": {         "type": "Point",         "coordinates": [           -105,           40         ]       },       "properties": {         "distance": 0,         "value": 1589.68359       }     },     {       "type": "Feature",       "geometry": {         "type": "Point",         "coordinates": [           -105.00356929493735,           40.003569770806926         ]       },       "properties": {         "distance": 500, </pre> </td> </tr> </table>	<b>Code</b>	200	<b>Description</b>	Success – Result returned	<b>Content Type</b>	application/json	<b>Content Description</b>	The contents are the same as if they were returned without an asynchronous call. They contain a GeoJSON FeatureCollection where each Feature in the FeatureCollection is a point along the profile which has the point’s geometry along with a “distance” property which gives the distance in meters from the previous point in the profile and a “value” property which is the value (elevation) of the terrain data source at that point.	<b>Content Example</b>	<pre> {   "type": "FeatureCollection",   "features": [     {       "type": "Feature",       "geometry": {         "type": "Point",         "coordinates": [           -105,           40         ]       },       "properties": {         "distance": 0,         "value": 1589.68359       }     },     {       "type": "Feature",       "geometry": {         "type": "Point",         "coordinates": [           -105.00356929493735,           40.003569770806926         ]       },       "properties": {         "distance": 500, </pre>
<b>Code</b>	200										
<b>Description</b>	Success – Result returned										
<b>Content Type</b>	application/json										
<b>Content Description</b>	The contents are the same as if they were returned without an asynchronous call. They contain a GeoJSON FeatureCollection where each Feature in the FeatureCollection is a point along the profile which has the point’s geometry along with a “distance” property which gives the distance in meters from the previous point in the profile and a “value” property which is the value (elevation) of the terrain data source at that point.										
<b>Content Example</b>	<pre> {   "type": "FeatureCollection",   "features": [     {       "type": "Feature",       "geometry": {         "type": "Point",         "coordinates": [           -105,           40         ]       },       "properties": {         "distance": 0,         "value": 1589.68359       }     },     {       "type": "Feature",       "geometry": {         "type": "Point",         "coordinates": [           -105.00356929493735,           40.003569770806926         ]       },       "properties": {         "distance": 500, </pre>										

	<pre>                 "value": 1601.67566             }         },         {             "type": "Feature",             "geometry": {                 "type": "Point",                 "coordinates": [                     -105.00713896168041,                     40.00713938952522                 ]             },             "properties": {                 "distance": 500,                 "value": 1610.09192             }         },         {             "type": "Feature",             "geometry": {                 "type": "Point",                 "coordinates": [                     -105.01,                     40.01                 ]             },             "properties": {                 "distance": 400.70546112401234,                 "value": 1599.65173             }         }     ] } </pre>
--	---------------------------------------------------------------------------------------------------------------------------------------------------------------------------------------------------------------------------------------------------------------------------------------------------------------------------------------------------------------------------------------------------------------------------------------------------------------------------------------------------------------------------------------------------------------------------------------------------------------------------------------------------------------------------------------------------------------------------------------------------------------------------------------------------------------------------------------

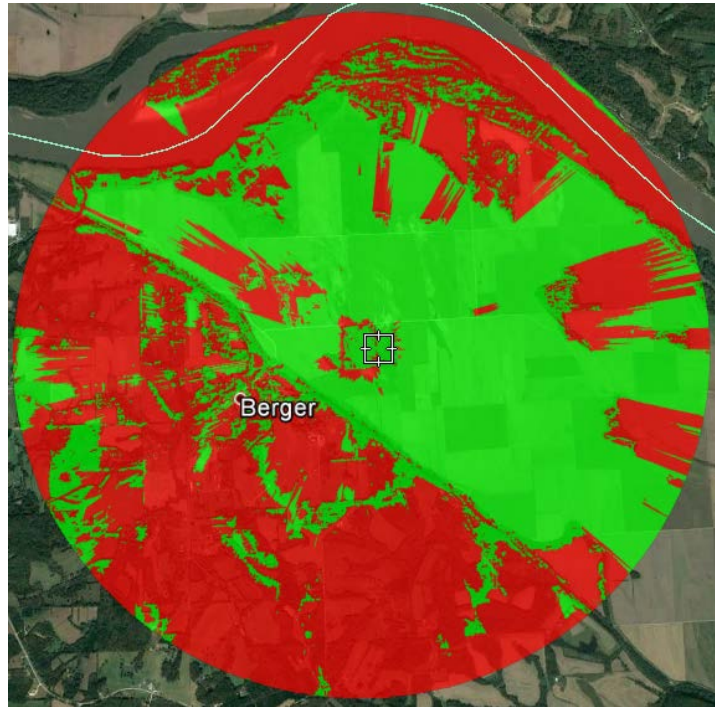
<b>Failure Responses</b>	<b>Code</b>	401 UNAUTHORIZED
	<b>Description</b>	Error when the authentication fails possibly due to incorrect login
	<b>Content Type</b>	text/xml
	<b>Content Example</b>	<pre> &lt;!DOCTYPE html PUBLIC "-//W3C//DTD XHTML 1.0 Strict//EN" "http://www.w3.org/TR/xhtml1/DTD/xhtml1-strict.dtd"&gt; &lt;html xmlns="http://www.w3.org/1999/xhtml"&gt; &lt;head&gt; &lt;meta http-equiv="Content-Type" content="text/html; charset=iso-8859-1"/&gt; &lt;title&gt;401 - Unauthorized: Access is denied due to invalid credentials.&lt;/title&gt; &lt;style type="text/css"&gt; &lt;!-- body{margin:0;font- size:.7em;font-family:Verdana, Arial, Helvetica, sans-serif;background:#EEEEEE;} fieldset{padding:0 15px 10px 15px;} h1{font-size:2.4em;margin:0;color:#FFF;} h2{font- size:1.7em;margin:0;color:#CC0000;} h3{font-size:1.2em;margin:10px 0 0 0;color:#000000;} #header{width:96%;margin:0 0 0 0;padding:6px 2% 6px 2%;font-family:"trebuchet MS", Verdana, sans-serif;color:#FFF; background-color:#555555;} #content{margin:0 0 0 2%;position:relative;} .content-container{background:#FFF;width:96%;margin- top:8px;padding:10px;position:relative;} --&gt; &lt;/style&gt; &lt;/head&gt; &lt;body&gt; &lt;div id="header"&gt;&lt;h1&gt;Server Error&lt;/h1&gt;&lt;/div&gt; &lt;div id="content"&gt; &lt;div class="content- container"&gt;&lt;fieldset&gt; &lt;h2&gt;401 - Unauthorized: Access is denied due to invalid credentials.&lt;/h2&gt; &lt;h3&gt;You do not have permission to view this directory or page using the credentials that you supplied.&lt;/h3&gt; &lt;/fieldset&gt;&lt;/div&gt; &lt;/div&gt; &lt;/body&gt; &lt;/html&gt; </pre>

	<b>Code</b>	400
	<b>Description</b>	Model is not valid. This may be due to specifying the parameters or content incorrectly.
	<b>Content Type</b>	application/xml
	<b>Content Example</b>	<string>Model is not valid. This error has been assigned an Incident ID of '66480-API2-TEST03-170605-193846'. Provide this Incident ID to customer support when you need assistance.</string>



## 4. Terrain Viewshed

A viewshed is an area that is visible from a specific location. Viewshed analyses are a common function of most geographic information system (GIS) software. The analysis uses the elevation value of each cell of the digital elevation model (DEM) to determine visibility to or from a particular cell. The location of this particular cell varies depending on the needs of the analysis. A viewshed is created from a DEM by using an algorithm that estimates the difference of elevation from one cell (the viewpoint cell) to the next (the target cell). To determine the visibility of a target cell, each cell between the viewpoint cell and target cell is examined for line of sight. Where cells of higher value are between the viewpoint and target cells the line of sight is blocked. If the line of sight is blocked then the target cell is determined to not be part of the viewshed.



Intermap's viewshed can be configured with a variety of variables. For example, if the analysis is to determine the location of a radio tower, the height of the tower (viewpoint cell) could be added to the elevation of that location (cell value). If no height is given, then the viewshed analysis uses the cell value of the DEM in which the tower is located. Similarly the receiver cell (Target cell) can have a height associate with it. The viewshed analysis can also have a limited viewing angle: The first value is the lowest possible azimuth angle and the second value is the highest possible azimuth angle. Intermap's viewshed also allows the radius to be adjusted to limit the range (and run time) of the calculation.

Gets a viewshed from a given location.

<b>Endpoint URL</b>	<a href="https://api.intermap.com/api/raster/&lt;Source ID&gt;/viewshed">https://api.intermap.com/api/raster/&lt;Source ID&gt;/viewshed</a> Where <Source ID> is a data source ID returned from a Terrain Sources call
<b>Authentication</b>	Basic
<b>Methods</b>	GET, POST

### 4.1. GET Method

<b>URL Parameters</b>	<b>Name</b>	<b>Required</b>	<b>Description</b>	<b>Example</b>
	easting northing	Yes	Easting and northing coordinates of the center point (source) of the viewshed. If the crs parameter is specified, the coordinate units are determined by the crs. If no crs parameter is given, then the coordinates are in WGS84 Geographic decimal degrees (EPSG:4326).	eastingStart=-105 northingStart=40
	radius	Yes	Radius of the viewshed from the center point in meters	radius=500
	center Height	No	The height of the center point in meters above the terrain (default = 0)	centerHeight=0.5
	fieldHe ight	No	The height of values in the field above the terrain. (default = 0)	fieldHeight=0.3
	azimut hStart	No	The starting azimuth in degrees of the resulting viewshed field. (default = 0)	azimuthStart=10
	azimut hEnd	No	The ending azimuth in degrees of the resulting viewshed field. (default = 360)	azimuthStart=350
	crs	No	Coordinate reference system (CRS) for the input coordinates in format EPSG:identifier where identifier is the EPSG code for the given CRS.	crs=EPSG:4326
<b>Header Parameters</b>				
<b>Content</b>				
<b>Example Request</b>	<b>URL</b>	<a href="https://api.intermap.com/api/raster/NEXTMap-USA_DSM/viewshed?easting=-105&amp;northing=40&amp;radius=100&amp;centerHeight=0.5&amp;fieldHeight=0.3&amp;azimuthStart=10&amp;azimuthEnd=350&amp;crs=EPSG:4326">https://api.intermap.com/api/raster/NEXTMap-USA_DSM/viewshed?easting=-105&amp;northing=40&amp;radius=100&amp;centerHeight=0.5&amp;fieldHeight=0.3&amp;azimuthStart=10&amp;azimuthEnd=350&amp;crs=EPSG:4326</a>		
	<b>Header Parameters</b>			
	<b>Content</b>			

## 4.2. POST Method

<b>URL Parameters</b>							
<b>Header Parameters</b>	Content-Type: application/json						
<b>Content</b>	<p>Request content is in GeoJSON format and contains a Point Feature whose geometry specifies the coordinate of the center point for the viewshed. There are also the following properties in the Feature:</p> <ul style="list-style-type: none"> <li>• radius – radius of the viewshed from the center point in meters (required)</li> <li>• centerHeight – height of the center point in meters above the terrain (optional : default = 0)</li> <li>• fieldHeight – height of the values in the field above the terrain (optional : default = 0)</li> <li>• azimuthStart – starting azimuth in degrees of the resulting viewshed field (optional : default = 0)</li> <li>• azimuthEnd – ending azimuth in degrees of the resulting viewshed field (optional : default = 360)</li> </ul> <p>The Feature may also contain a crs which is used to identify the Coordinate Reference System of the point coordinates. If no crs is given then WGS84 Geographic decimal degrees (EPSG:4326) is used.</p>						
<b>Example Request</b>	<table border="1"> <tr> <td data-bbox="386 1220 578 1255"><b>URL</b></td> <td data-bbox="578 1220 1485 1255"><a href="https://api.intermap.com/api/raster/NEXMap-USA_DSM/viewshed">https://api.intermap.com/api/raster/NEXMap-USA_DSM/viewshed</a></td> </tr> <tr> <td data-bbox="386 1255 578 1329"><b>Header Parameters</b></td> <td data-bbox="578 1255 1485 1329">Content-Type: application/json</td> </tr> <tr> <td data-bbox="386 1329 578 1881"><b>Content</b></td> <td data-bbox="578 1329 1485 1881"> <pre>{   "type": "Feature",   "crs": {     "type": "name",     "properties": {       "name": "EPSG:4326"     }   },   "geometry": {     "type": "Point",     "coordinates": [ -105, 40 ]   },   "properties": {     "azimuthStart": 10,     "azimuthEnd": 350,     "centerHeight": 0.5,     "fieldHeight": 0.3,     "radius": 500   } }</pre> </td> </tr> </table>	<b>URL</b>	<a href="https://api.intermap.com/api/raster/NEXMap-USA_DSM/viewshed">https://api.intermap.com/api/raster/NEXMap-USA_DSM/viewshed</a>	<b>Header Parameters</b>	Content-Type: application/json	<b>Content</b>	<pre>{   "type": "Feature",   "crs": {     "type": "name",     "properties": {       "name": "EPSG:4326"     }   },   "geometry": {     "type": "Point",     "coordinates": [ -105, 40 ]   },   "properties": {     "azimuthStart": 10,     "azimuthEnd": 350,     "centerHeight": 0.5,     "fieldHeight": 0.3,     "radius": 500   } }</pre>
<b>URL</b>	<a href="https://api.intermap.com/api/raster/NEXMap-USA_DSM/viewshed">https://api.intermap.com/api/raster/NEXMap-USA_DSM/viewshed</a>						
<b>Header Parameters</b>	Content-Type: application/json						
<b>Content</b>	<pre>{   "type": "Feature",   "crs": {     "type": "name",     "properties": {       "name": "EPSG:4326"     }   },   "geometry": {     "type": "Point",     "coordinates": [ -105, 40 ]   },   "properties": {     "azimuthStart": 10,     "azimuthEnd": 350,     "centerHeight": 0.5,     "fieldHeight": 0.3,     "radius": 500   } }</pre>						

	}
--	---

### 4.3. Success Responses

<b>Code</b>	200
<b>Description</b>	Success – Response contains results
<b>Content Type</b>	application/json
<b>Content Description</b>	<p>The contents are returned as a GeoJSON Polygon Feature with the geometry defining the bounding box of the result. It also contains the following properties:</p> <ul style="list-style-type: none"> <li>• visibility – The visible area of the viewshed in percent</li> <li>• visibleArea – The visible area of the viewshed in square meters</li> <li>• invisibleArea – The invisible area of the viewshed in square meters</li> <li>• resultUrl – Url which is used in a follow-up <a href="#">Viewshed Result</a> query</li> </ul>
<b>Content Example</b>	<pre>{   "type": "Feature",   "geometry": {     "type": "Polygon",     "coordinates": [       [         [           -105.00585416666672,           39.99547916666667         ],         [           -105.00585416666672,           40.00452083333333         ],         [           -104.99414583333332,           40.00452083333333         ],         [           -104.99414583333332,           39.99547916666667         ],         [           -105.00585416666672,           39.99547916666667         ]       ]     ]   },   "properties": {     "invisibleArea": 889631.41,     "resultUrl": "https://api-test.intermap.com/api/raster/NEXTMap-USA_DSM/viewshed/0174a6df-720c-4dfd-9926-5e7954504b0d/result",     "visibility": 10.76,     "visibleArea": 107264.94   } }</pre>

<b>Code</b>	202
<b>Description</b>	Accepted – Processing will take a long time so an asynchronous job has been created
<b>Header Parameters</b>	<b>Location</b> – Contains a URL which is used in a GET call to get the status and result URL for the job (see <a href="#">Asynchronous Processing</a> )
<b>Content Type</b>	application/json
<b>Content Description</b>	The contents simply contain the word null because the desired URL is in the header rather than the contents
<b>Content Example</b>	null

#### 4.4. Error Responses

<b>Code</b>	401 UNAUTHORIZED
<b>Description</b>	Error when the authentication fails possibly due to incorrect login
<b>Content Type</b>	text/xml
<b>Content Example</b>	<!DOCTYPE html PUBLIC "-//W3C//DTD XHTML 1.0 Strict//EN" "http://www.w3.org/TR/xhtml1/DTD/xhtml1-strict.dtd"> <html xmlns="http://www.w3.org/1999/xhtml"> <head> <meta http-equiv="Content-Type" content="text/html; charset=iso-8859-1"/> <title>401 - Unauthorized: Access is denied due to invalid credentials.</title> <style type="text/css"> <!-- body{margin:0;font-size:.7em;font-family:Verdana, Arial, Helvetica, sans-serif;background:#EEEEEE;} fieldset{padding:0 15px 10px 15px;} h1{font-size:2.4em;margin:0;color:#FFF;} h2{font-size:1.7em;margin:0;color:#CC0000;} h3{font-size:1.2em;margin:10px 0 0 0;color:#000000;} #header{width:96%;margin:0 0 0;padding:6px 2% 6px 2%;font-family:"trebuchet MS", Verdana, sans-serif;color:#FFF; background-color:#555555;} #content{margin:0 0 2%;position:relative;} .content-container{background:#FFF;width:96%;margin-top:8px;padding:10px;position:relative;} --> </style> </head> <body> <div id="header"><h1>Server Error</h1></div> <div id="content"> <div class="content-container"><fieldset> <h2>401 - Unauthorized: Access is denied due to invalid credentials.</h2> <h3>You do not have permission to view this directory or page using the credentials that you supplied.</h3> </fieldset></div> </div> </body> </html>

<b>Code</b>	400
<b>Description</b>	Model is not valid. This may be due to specifying the parameters or content incorrectly.
<b>Content Type</b>	application/xml
<b>Content Example</b>	<string>Model is not valid. This error has been assigned an Incident ID of '66480-API2-TEST03-170605-193846'. Provide this Incident ID to customer support when you need assistance.</string>

#### 4.5. Viewshed Result – GET Method

Endpoint URL is extracted from the resultUrl property in the result from the Viewshed GET or POST method. It uses the same basic authentication.

<b>URL Parameters</b>	
-----------------------	--

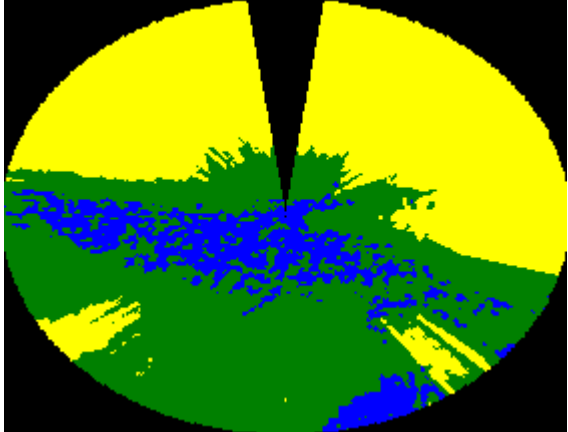
<b>Header Parameters</b>	Accept: application/vnd.google.earth.kmz or Accept: image/png Or Accept: image/jpeg						
<b>Content</b>							
<b>Example Request</b>	<table border="1"> <tr> <td><b>URL</b></td> <td><a href="https://api-test.intermap.com/api/raster/NEXTMap-USA_DSM/viewshed/0174a6df-720c-4dfd-9926-5e7954504b0d/result">https://api-test.intermap.com/api/raster/NEXTMap-USA_DSM/viewshed/0174a6df-720c-4dfd-9926-5e7954504b0d/result</a></td> </tr> <tr> <td><b>Header Parameters</b></td> <td>Accept: image/png</td> </tr> <tr> <td><b>Content</b></td> <td></td> </tr> </table>	<b>URL</b>	<a href="https://api-test.intermap.com/api/raster/NEXTMap-USA_DSM/viewshed/0174a6df-720c-4dfd-9926-5e7954504b0d/result">https://api-test.intermap.com/api/raster/NEXTMap-USA_DSM/viewshed/0174a6df-720c-4dfd-9926-5e7954504b0d/result</a>	<b>Header Parameters</b>	Accept: image/png	<b>Content</b>	
<b>URL</b>	<a href="https://api-test.intermap.com/api/raster/NEXTMap-USA_DSM/viewshed/0174a6df-720c-4dfd-9926-5e7954504b0d/result">https://api-test.intermap.com/api/raster/NEXTMap-USA_DSM/viewshed/0174a6df-720c-4dfd-9926-5e7954504b0d/result</a>						
<b>Header Parameters</b>	Accept: image/png						
<b>Content</b>							

#### 4.6. Viewshed Result – POST Method

<b>URL Parameters</b>	
<b>Header Parameters</b>	Content-Type: application/json  Accept: application/vnd.google.earth.kmz or Accept: image/png Or Accept: image/jpeg
<b>Content</b>	<p>The content is used to specify how the resulting viewshed appears. The content may be empty to use the default visualization options.</p> <p>The content is simple JSON with the following elements:</p> <ul style="list-style-type: none"> <li>• colorVisible – color of the visible area (default = Lime)</li> <li>• colorInvisible – color of the invisible area (default = Red)</li> <li>• colorNoData – color of areas with no data (null areas) (default = rgb(0,0,128,1))</li> <li>• colorShadow – color of areas defined by depthShadowLimit (default = pink)</li> <li>• depthShadowLimit – if negative, areas which are not visible, but higher than this value below terrain are displayed in colorShadow</li> </ul> <p>Color formatting can use standard color names (e.g. red), rgb colors with transparency (e.g. rgb(0, 255, 0, 0.5)) or without transparency (e.g. rgb(0, 255, 0)), or they can use rgb hex format with 8, 6, 3, or 4 digits (e.g. #00ff00cc)</p>

<b>Example Request</b>	<b>URL</b>	<a href="https://api-test.intermap.com/api/raster/NEXTMap-USA_DSM/viewshed/0174a6df-720c-4dfd-9926-5e7954504b0d/result">https://api-test.intermap.com/api/raster/NEXTMap-USA_DSM/viewshed/0174a6df-720c-4dfd-9926-5e7954504b0d/result</a>
	<b>Header Parameters</b>	Accept: image/png
	<b>Content</b>	{ "colorVisible" : "blue", "colorInvisible" : "yellow", "colorNoData" : "red", "colorShadow" : "green", "depthShadowLimit" : -5 }

#### 4.7. Viewshed Result - Success Responses

<b>Code</b>	200
<b>Description</b>	Success – Response contains results
<b>Content Type</b>	Depends on Accept header parameter in request
<b>Content Description</b>	The contents are returned as imagery in the requested format
<b>Content Example</b>	

#### 4.8. Viewshed Result - Error Responses

<b>Code</b>	401 UNAUTHORIZED
<b>Description</b>	Error when the authentication fails possibly due to incorrect login
<b>Content Type</b>	text/xml
<b>Content Example</b>	<pre>&lt;!DOCTYPE html PUBLIC "-//W3C//DTD XHTML 1.0 Strict//EN" "http://www.w3.org/TR/xhtml1/DTD/xhtml1-strict.dtd"&gt; &lt;html xmlns="http://www.w3.org/1999/xhtml"&gt; &lt;head&gt; &lt;meta http-equiv="Content-Type" content="text/html; charset=iso-8859-1"/&gt; &lt;title&gt;401 - Unauthorized: Access is denied due to invalid credentials.&lt;/title&gt; &lt;style type="text/css"&gt; &lt;!-- body{margin:0;font-size:.7em;font-family:Verdana, Arial, Helvetica, sans-serif;background:#EEEEEE;} fieldset{padding:0 15px 10px 15px;} h1{font-size:2.4em;margin:0;color:#FFF;} h2{font-size:1.7em;margin:0;color:#CC0000;} h3{font-size:1.2em;margin:10px 0 0 0;color:#000000;} #header{width:96%;margin:0 0 0 0;padding:6px 2% 6px 2%;font-family:"trebuchet MS", Verdana, sans-serif;color:#FFF; background-color:#555555;} #content{margin:0 0 2%;position:relative;} .content-container{background:#FFF;width:96%;margin-top:8px;padding:10px;position:relative;} --&gt; &lt;/style&gt; &lt;/head&gt; &lt;body&gt; &lt;div id="header"&gt;&lt;h1&gt;Server Error&lt;/h1&gt;&lt;/div&gt; &lt;div id="content"&gt; &lt;div class="content-container"&gt;&lt;fieldset&gt;</pre>

	<h2>401 - Unauthorized: Access is denied due to invalid credentials.</h2> <h3>You do not have permission to view this directory or page using the credentials that you supplied.</h3> </fieldset></div> </div> </body> </html>
--	--------------------------------------------------------------------------------------------------------------------------------------------------------------------------------------------------------------------------------

<b>Code</b>	400
<b>Description</b>	Model is not valid. This may be due to specifying the parameters or content incorrectly.
<b>Content Type</b>	application/xml
<b>Content Example</b>	<string>Model is not valid. This error has been assigned an Incident ID of '66480-API2-TEST03-170605-193846'. Provide this Incident ID to customer support when you need assistance.</string>

## 4.9. Asynchronous Processing

When a task will take a long time, it will be sent off for asynchronous processing rather than making the caller wait for a response. In this case, a response with a code of 202 is returned. This response contains a Location header parameter which is a URL for obtaining the status and when complete, the result.

The asynchronous status is a GET method that allows the user to check the status of the asynchronous job, and when complete, it gives the URL for the result. It uses the same basic authentication as the other methods.

<b>URL Parameters</b>	None								
<b>Header Parameters</b>	None								
<b>Content</b>	None								
<b>Example Request</b>	<table border="1"> <tr> <td><b>URL</b></td> <td><a href="https://api-test.intermap.com/tasks/02237c3e-4f0e-e711-80c3-000d3a604bff/status">https://api-test.intermap.com/tasks/02237c3e-4f0e-e711-80c3-000d3a604bff/status</a></td> </tr> <tr> <td><b>Header Parameters</b></td> <td></td> </tr> <tr> <td><b>Content</b></td> <td></td> </tr> </table>	<b>URL</b>	<a href="https://api-test.intermap.com/tasks/02237c3e-4f0e-e711-80c3-000d3a604bff/status">https://api-test.intermap.com/tasks/02237c3e-4f0e-e711-80c3-000d3a604bff/status</a>	<b>Header Parameters</b>		<b>Content</b>			
<b>URL</b>	<a href="https://api-test.intermap.com/tasks/02237c3e-4f0e-e711-80c3-000d3a604bff/status">https://api-test.intermap.com/tasks/02237c3e-4f0e-e711-80c3-000d3a604bff/status</a>								
<b>Header Parameters</b>									
<b>Content</b>									
<b>Success Responses</b>	<table border="1"> <tr> <td><b>Code</b></td> <td>200</td> </tr> <tr> <td><b>Description</b></td> <td>Success – Status check is successful, but the job is still processing</td> </tr> <tr> <td><b>Content Type</b></td> <td>application/json</td> </tr> <tr> <td><b>Content Description</b></td> <td>The contents are simple JSON with a “location” element echoing back the status URL and a “status” element that gives the current status of the processing.</td> </tr> </table>	<b>Code</b>	200	<b>Description</b>	Success – Status check is successful, but the job is still processing	<b>Content Type</b>	application/json	<b>Content Description</b>	The contents are simple JSON with a “location” element echoing back the status URL and a “status” element that gives the current status of the processing.
<b>Code</b>	200								
<b>Description</b>	Success – Status check is successful, but the job is still processing								
<b>Content Type</b>	application/json								
<b>Content Description</b>	The contents are simple JSON with a “location” element echoing back the status URL and a “status” element that gives the current status of the processing.								



	<table border="1"> <tr> <td data-bbox="393 268 558 407"><b>Content Example</b></td> <td data-bbox="565 268 1477 407"> <pre>{   "location": "https://api-test.intermap.com/tasks/02237c3e-4f0e-e711-80c3-000d3a604bff/status",   "status": "processing" }</pre> </td> </tr> <tr> <td data-bbox="393 445 558 478"><b>Code</b></td> <td data-bbox="565 445 1477 478">303</td> </tr> <tr> <td data-bbox="393 487 558 520"><b>Description</b></td> <td data-bbox="565 487 1477 520">Redirect – Status check is successful and the job is complete</td> </tr> <tr> <td data-bbox="393 529 558 592"><b>Header Parameters</b></td> <td data-bbox="565 529 1477 592"><b>Location</b> – URL that contains the result of the processing</td> </tr> <tr> <td data-bbox="393 600 558 663"><b>Content Type</b></td> <td data-bbox="565 600 1477 663">No Content</td> </tr> <tr> <td data-bbox="393 672 558 735"><b>Content Description</b></td> <td data-bbox="565 672 1477 735">There is no content</td> </tr> <tr> <td data-bbox="393 743 558 806"><b>Content Example</b></td> <td data-bbox="565 743 1477 806"></td> </tr> </table>	<b>Content Example</b>	<pre>{   "location": "https://api-test.intermap.com/tasks/02237c3e-4f0e-e711-80c3-000d3a604bff/status",   "status": "processing" }</pre>	<b>Code</b>	303	<b>Description</b>	Redirect – Status check is successful and the job is complete	<b>Header Parameters</b>	<b>Location</b> – URL that contains the result of the processing	<b>Content Type</b>	No Content	<b>Content Description</b>	There is no content	<b>Content Example</b>	
<b>Content Example</b>	<pre>{   "location": "https://api-test.intermap.com/tasks/02237c3e-4f0e-e711-80c3-000d3a604bff/status",   "status": "processing" }</pre>														
<b>Code</b>	303														
<b>Description</b>	Redirect – Status check is successful and the job is complete														
<b>Header Parameters</b>	<b>Location</b> – URL that contains the result of the processing														
<b>Content Type</b>	No Content														
<b>Content Description</b>	There is no content														
<b>Content Example</b>															
<h2>Failure Responses</h2>	<table border="1"> <tr> <td data-bbox="393 856 558 890"><b>Code</b></td> <td data-bbox="565 856 1477 890">401 UNAUTHORIZED</td> </tr> <tr> <td data-bbox="393 898 558 932"><b>Description</b></td> <td data-bbox="565 898 1477 932">Error when the authentication fails possibly due to incorrect login</td> </tr> <tr> <td data-bbox="393 940 558 1003"><b>Content Type</b></td> <td data-bbox="565 940 1477 1003">text/xml</td> </tr> <tr> <td data-bbox="393 1012 558 1453"><b>Content Example</b></td> <td data-bbox="565 1012 1477 1453"> <pre>&lt;!DOCTYPE html PUBLIC "-//W3C//DTD XHTML 1.0 Strict//EN" "http://www.w3.org/TR/xhtml1/DTD/xhtml1-strict.dtd"&gt; &lt;html xmlns="http://www.w3.org/1999/xhtml"&gt; &lt;head&gt; &lt;meta http-equiv="Content-Type" content="text/html; charset=iso-8859-1"/&gt; &lt;title&gt;401 - Unauthorized: Access is denied due to invalid credentials.&lt;/title&gt; &lt;style type="text/css"&gt; &lt;!-- body{margin:0;font- size:.7em;font-family:Verdana, Arial, Helvetica, sans-serif;background:#EEEEEE;} fieldset{padding:0 15px 10px 15px;} h1{font-size:2.4em;margin:0;color:#FFF;} h2{font- size:1.7em;margin:0;color:#CC0000;} h3{font-size:1.2em;margin:10px 0 0 0;color:#000000;} #header{width:96%;margin:0 0 0 0;padding:6px 2% 6px 2%;font-family:"trebuchet MS", Verdana, sans-serif;color:#FFF; background-color:#555555;} #content{margin:0 0 0 2%;position:relative;} .content-container{background:#FFF;width:96%;margin- top:8px;padding:10px;position:relative;} --&gt; &lt;/style&gt; &lt;/head&gt; &lt;body&gt; &lt;div id="header"&gt;&lt;h1&gt;Server Error&lt;/h1&gt;&lt;/div&gt; &lt;div id="content"&gt; &lt;div class="content- container"&gt;&lt;fieldset&gt; &lt;h2&gt;401 - Unauthorized: Access is denied due to invalid credentials.&lt;/h2&gt; &lt;h3&gt;You do not have permission to view this directory or page using the credentials that you supplied.&lt;/h3&gt; &lt;/fieldset&gt;&lt;/div&gt; &lt;/div&gt; &lt;/body&gt; &lt;/html&gt;</pre> </td> </tr> </table>	<b>Code</b>	401 UNAUTHORIZED	<b>Description</b>	Error when the authentication fails possibly due to incorrect login	<b>Content Type</b>	text/xml	<b>Content Example</b>	<pre>&lt;!DOCTYPE html PUBLIC "-//W3C//DTD XHTML 1.0 Strict//EN" "http://www.w3.org/TR/xhtml1/DTD/xhtml1-strict.dtd"&gt; &lt;html xmlns="http://www.w3.org/1999/xhtml"&gt; &lt;head&gt; &lt;meta http-equiv="Content-Type" content="text/html; charset=iso-8859-1"/&gt; &lt;title&gt;401 - Unauthorized: Access is denied due to invalid credentials.&lt;/title&gt; &lt;style type="text/css"&gt; &lt;!-- body{margin:0;font- size:.7em;font-family:Verdana, Arial, Helvetica, sans-serif;background:#EEEEEE;} fieldset{padding:0 15px 10px 15px;} h1{font-size:2.4em;margin:0;color:#FFF;} h2{font- size:1.7em;margin:0;color:#CC0000;} h3{font-size:1.2em;margin:10px 0 0 0;color:#000000;} #header{width:96%;margin:0 0 0 0;padding:6px 2% 6px 2%;font-family:"trebuchet MS", Verdana, sans-serif;color:#FFF; background-color:#555555;} #content{margin:0 0 0 2%;position:relative;} .content-container{background:#FFF;width:96%;margin- top:8px;padding:10px;position:relative;} --&gt; &lt;/style&gt; &lt;/head&gt; &lt;body&gt; &lt;div id="header"&gt;&lt;h1&gt;Server Error&lt;/h1&gt;&lt;/div&gt; &lt;div id="content"&gt; &lt;div class="content- container"&gt;&lt;fieldset&gt; &lt;h2&gt;401 - Unauthorized: Access is denied due to invalid credentials.&lt;/h2&gt; &lt;h3&gt;You do not have permission to view this directory or page using the credentials that you supplied.&lt;/h3&gt; &lt;/fieldset&gt;&lt;/div&gt; &lt;/div&gt; &lt;/body&gt; &lt;/html&gt;</pre>						
	<b>Code</b>	401 UNAUTHORIZED													
<b>Description</b>	Error when the authentication fails possibly due to incorrect login														
<b>Content Type</b>	text/xml														
<b>Content Example</b>	<pre>&lt;!DOCTYPE html PUBLIC "-//W3C//DTD XHTML 1.0 Strict//EN" "http://www.w3.org/TR/xhtml1/DTD/xhtml1-strict.dtd"&gt; &lt;html xmlns="http://www.w3.org/1999/xhtml"&gt; &lt;head&gt; &lt;meta http-equiv="Content-Type" content="text/html; charset=iso-8859-1"/&gt; &lt;title&gt;401 - Unauthorized: Access is denied due to invalid credentials.&lt;/title&gt; &lt;style type="text/css"&gt; &lt;!-- body{margin:0;font- size:.7em;font-family:Verdana, Arial, Helvetica, sans-serif;background:#EEEEEE;} fieldset{padding:0 15px 10px 15px;} h1{font-size:2.4em;margin:0;color:#FFF;} h2{font- size:1.7em;margin:0;color:#CC0000;} h3{font-size:1.2em;margin:10px 0 0 0;color:#000000;} #header{width:96%;margin:0 0 0 0;padding:6px 2% 6px 2%;font-family:"trebuchet MS", Verdana, sans-serif;color:#FFF; background-color:#555555;} #content{margin:0 0 0 2%;position:relative;} .content-container{background:#FFF;width:96%;margin- top:8px;padding:10px;position:relative;} --&gt; &lt;/style&gt; &lt;/head&gt; &lt;body&gt; &lt;div id="header"&gt;&lt;h1&gt;Server Error&lt;/h1&gt;&lt;/div&gt; &lt;div id="content"&gt; &lt;div class="content- container"&gt;&lt;fieldset&gt; &lt;h2&gt;401 - Unauthorized: Access is denied due to invalid credentials.&lt;/h2&gt; &lt;h3&gt;You do not have permission to view this directory or page using the credentials that you supplied.&lt;/h3&gt; &lt;/fieldset&gt;&lt;/div&gt; &lt;/div&gt; &lt;/body&gt; &lt;/html&gt;</pre>														
<table border="1"> <tr> <td data-bbox="393 1503 558 1537"><b>Code</b></td> <td data-bbox="565 1503 1477 1537">400</td> </tr> <tr> <td data-bbox="393 1545 558 1608"><b>Description</b></td> <td data-bbox="565 1545 1477 1608">Model is not valid. This may be due to specifying the parameters or content incorrectly.</td> </tr> <tr> <td data-bbox="393 1617 558 1680"><b>Content Type</b></td> <td data-bbox="565 1617 1477 1680">application/xml</td> </tr> <tr> <td data-bbox="393 1688 558 1751"><b>Content Example</b></td> <td data-bbox="565 1688 1477 1751"> <pre>&lt;string&gt;Model is not valid. This error has been assigned an Incident ID of '66480-API2- TEST03-170605-193846'. Provide this Incident ID to customer support when you need assistance.&lt;/string&gt;</pre> </td> </tr> </table>	<b>Code</b>	400	<b>Description</b>	Model is not valid. This may be due to specifying the parameters or content incorrectly.	<b>Content Type</b>	application/xml	<b>Content Example</b>	<pre>&lt;string&gt;Model is not valid. This error has been assigned an Incident ID of '66480-API2- TEST03-170605-193846'. Provide this Incident ID to customer support when you need assistance.&lt;/string&gt;</pre>							
<b>Code</b>	400														
<b>Description</b>	Model is not valid. This may be due to specifying the parameters or content incorrectly.														
<b>Content Type</b>	application/xml														
<b>Content Example</b>	<pre>&lt;string&gt;Model is not valid. This error has been assigned an Incident ID of '66480-API2- TEST03-170605-193846'. Provide this Incident ID to customer support when you need assistance.&lt;/string&gt;</pre>														

The asynchronous result is a GET method that simply gets back the result from an asynchronous processing job with the URL given in the asynchronous status call.

<b>URL Parameters</b>	None										
<b>Header Parameters</b>	None										
<b>Content</b>	None										
<b>Example Request</b>	<table border="1"> <tr> <td><b>URL</b></td> <td><a href="https://api.intermap.com/tasks/02237c3e-4f0e-e711-80c3-000d3a604bff">https://api.intermap.com/tasks/02237c3e-4f0e-e711-80c3-000d3a604bff</a></td> </tr> <tr> <td><b>Header Parameters</b></td> <td></td> </tr> <tr> <td><b>Content</b></td> <td></td> </tr> </table>	<b>URL</b>	<a href="https://api.intermap.com/tasks/02237c3e-4f0e-e711-80c3-000d3a604bff">https://api.intermap.com/tasks/02237c3e-4f0e-e711-80c3-000d3a604bff</a>	<b>Header Parameters</b>		<b>Content</b>					
<b>URL</b>	<a href="https://api.intermap.com/tasks/02237c3e-4f0e-e711-80c3-000d3a604bff">https://api.intermap.com/tasks/02237c3e-4f0e-e711-80c3-000d3a604bff</a>										
<b>Header Parameters</b>											
<b>Content</b>											
<b>Success Responses</b>	<table border="1"> <tr> <td><b>Code</b></td> <td>200</td> </tr> <tr> <td><b>Description</b></td> <td>Success – Result returned</td> </tr> <tr> <td><b>Content Type</b></td> <td>application/json</td> </tr> <tr> <td><b>Content Description</b></td> <td> <p>The contents are the same as if they were returned without an asynchronous call. The contents are returned as a GeoJSON Polygon Feature with the geometry defining the bounding box of the result. It also contains the following properties:</p> <ul style="list-style-type: none"> <li>• visibility – The visible area of the viewshed in percent</li> <li>• visibleArea – The visible area of the viewshed in square meters</li> <li>• invisibleArea – The invisible area of the viewshed in square meters</li> <li>• resultUrl – Url which is used in a follow-up <a href="#">Viewshed Result</a> query</li> </ul> </td> </tr> <tr> <td><b>Content Example</b></td> <td> <pre>{   "type": "Feature",   "geometry": {     "type": "Polygon",     "coordinates": [       [         [           -105.00585416666672,           39.99547916666667         ],         [           -105.00585416666672,           40.004520833333333         ]       ]     ]   } }</pre> </td> </tr> </table>	<b>Code</b>	200	<b>Description</b>	Success – Result returned	<b>Content Type</b>	application/json	<b>Content Description</b>	<p>The contents are the same as if they were returned without an asynchronous call. The contents are returned as a GeoJSON Polygon Feature with the geometry defining the bounding box of the result. It also contains the following properties:</p> <ul style="list-style-type: none"> <li>• visibility – The visible area of the viewshed in percent</li> <li>• visibleArea – The visible area of the viewshed in square meters</li> <li>• invisibleArea – The invisible area of the viewshed in square meters</li> <li>• resultUrl – Url which is used in a follow-up <a href="#">Viewshed Result</a> query</li> </ul>	<b>Content Example</b>	<pre>{   "type": "Feature",   "geometry": {     "type": "Polygon",     "coordinates": [       [         [           -105.00585416666672,           39.99547916666667         ],         [           -105.00585416666672,           40.004520833333333         ]       ]     ]   } }</pre>
<b>Code</b>	200										
<b>Description</b>	Success – Result returned										
<b>Content Type</b>	application/json										
<b>Content Description</b>	<p>The contents are the same as if they were returned without an asynchronous call. The contents are returned as a GeoJSON Polygon Feature with the geometry defining the bounding box of the result. It also contains the following properties:</p> <ul style="list-style-type: none"> <li>• visibility – The visible area of the viewshed in percent</li> <li>• visibleArea – The visible area of the viewshed in square meters</li> <li>• invisibleArea – The invisible area of the viewshed in square meters</li> <li>• resultUrl – Url which is used in a follow-up <a href="#">Viewshed Result</a> query</li> </ul>										
<b>Content Example</b>	<pre>{   "type": "Feature",   "geometry": {     "type": "Polygon",     "coordinates": [       [         [           -105.00585416666672,           39.99547916666667         ],         [           -105.00585416666672,           40.004520833333333         ]       ]     ]   } }</pre>										

	<pre> [   -104.99414583333332,   40.00452083333333 ], [   -104.99414583333332,   39.99547916666667 ], [   -105.00585416666672,   39.99547916666667 ] ] } }, "properties": {   "invisibleArea": 889631.41,   "resultUrl": "https://api-test.intermap.com/api/raster/NEXTMap-USA_DSM/viewshed/0174a6df-720c-4dfd-9926-5e7954504b0d/result",   "visibility": 10.76,   "visibleArea": 107264.94 } } </pre>
--	--------------------------------------------------------------------------------------------------------------------------------------------------------------------------------------------------------------------------------------------------------------------------------------------------------------------------------------------------------------------------------------------------------

<b>Failure Responses</b>	<b>Code</b>	401 UNAUTHORIZED
	<b>Description</b>	Error when the authentication fails possibly due to incorrect login
	<b>Content Type</b>	text/xml
	<b>Content Example</b>	<!DOCTYPE html PUBLIC "-//W3C//DTD XHTML 1.0 Strict//EN" "http://www.w3.org/TR/xhtml1/DTD/xhtml1-strict.dtd"> <html xmlns="http://www.w3.org/1999/xhtml"> <head> <meta http-equiv="Content-Type" content="text/html; charset=iso-8859-1"/> <title>401 - Unauthorized: Access is denied due to invalid credentials.</title> <style type="text/css"> <!-- body{margin:0;font-size:.7em;font-family:Verdana, Arial, Helvetica, sans-serif;background:#EEEEEE;} fieldset{padding:0 15px 10px 15px;} h1{font-size:2.4em;margin:0;color:#FFF;} h2{font-size:1.7em;margin:0;color:#CC0000;} h3{font-size:1.2em;margin:10px 0 0 0;color:#000000;} #header{width:96%;margin:0 0 0 0;padding:6px 2% 6px 2%;font-family:"trebuchet MS", Verdana, sans-serif;color:#FFF; background-color:#555555;} #content{margin:0 0 2%;position:relative;} .content-container{background:#FFF;width:96%;margin-top:8px;padding:10px;position:relative;} --> </style> </head> <body> <div id="header"><h1>Server Error</h1></div> <div id="content"> <div class="content-container"><fieldset> <h2>401 - Unauthorized: Access is denied due to invalid credentials.</h2> <h3>You do not have permission to view this directory or page using the credentials that you supplied.</h3> </fieldset></div> </div> </body> </html>
	<b>Code</b>	400
	<b>Description</b>	Model is not valid. This may be due to specifying the parameters or content incorrectly.
<b>Content Type</b>	application/xml	

	<table border="1"><tr><td data-bbox="380 249 560 352"><b>Content Example</b></td><td data-bbox="565 249 1484 352"><code>&lt;string&gt;Model is not valid. This error has been assigned an Incident ID of '66480-API2-TEST03-170605-193846'. Provide this Incident ID to customer support when you need assistance.&lt;/string&gt;</code></td></tr></table>	<b>Content Example</b>	<code>&lt;string&gt;Model is not valid. This error has been assigned an Incident ID of '66480-API2-TEST03-170605-193846'. Provide this Incident ID to customer support when you need assistance.&lt;/string&gt;</code>
<b>Content Example</b>	<code>&lt;string&gt;Model is not valid. This error has been assigned an Incident ID of '66480-API2-TEST03-170605-193846'. Provide this Incident ID to customer support when you need assistance.&lt;/string&gt;</code>		