



Data Fusion

Combining Elevation Sources

Wide-Area Mapping Through Target Data Resolutions

Intermap's fusion services bring multiple elevation datasets, of differing resolutions and specifications, together into one homogeneous layer. This allows management of resources and budgets by targeting high-resolution data in high-value areas such as cities, corridors and critical flood plains while providing wider area coverage from a medium-resolution IFSAR or low-resolution global dataset. Data fusion allows new acquisitions to leverage multiple sensors to reduce project costs while allowing the incorporation of existing discontinuous datasets. This is consistent with a long-term program strategy for managing elevation foundation data.

Key Benefits and Features



Global Base Layers

Benefit from Intermap's suite of highly accurate global datasets



Seamless Terrain Coverage

Merge disparate datasets to fill gaps for fully integrated mapping solutions



Vertical Alignment

Leverage poorly controlled datasets using the vertical accuracy of the base layer



Multiple Input Formats

We manage complexities with projections, datums, resolutions, and formats



Targeted Enhancements

Infuse nationwide base layers with higher resolution data in critical areas



Cost-Effective Accuracy

Optimize your budget by using expensive high-resolution data only where needed

Data Fusion Process

Intermap's DEM Fusion service optimally combines elevation models from different sources into a seamless dataset. The service is based upon our accurate NEXTMap® foundation data that can be used to vertically align other DEMs of higher spatial resolution before seamlessly blending them into the base layer. This produces a consistent homogeneous dataset that enables precise 3D mapping applications. For example, DEM Fusion could leverage traditional aerial photogrammetric DEMs or LiDAR DEMs in urban areas and critical flood plains, while providing highly accurate NEXTMap IFSAR data everywhere else. The seamlessly fused hybrid product enables optimal combination of the data so that the higher accuracy data covers the key areas such as cities, utility corridors, and waterways. Intermap's processes are designed to integrate and align multiple elevation data sources. This allows customers to optimize their project and budget using the highest resolution elevation data only where it is needed.

Potential Applications

- Watershed and flood modeling
- Infrastructure development
- National security and defense
- Emergency Response
- Telecommunications planning
- Natural resource management



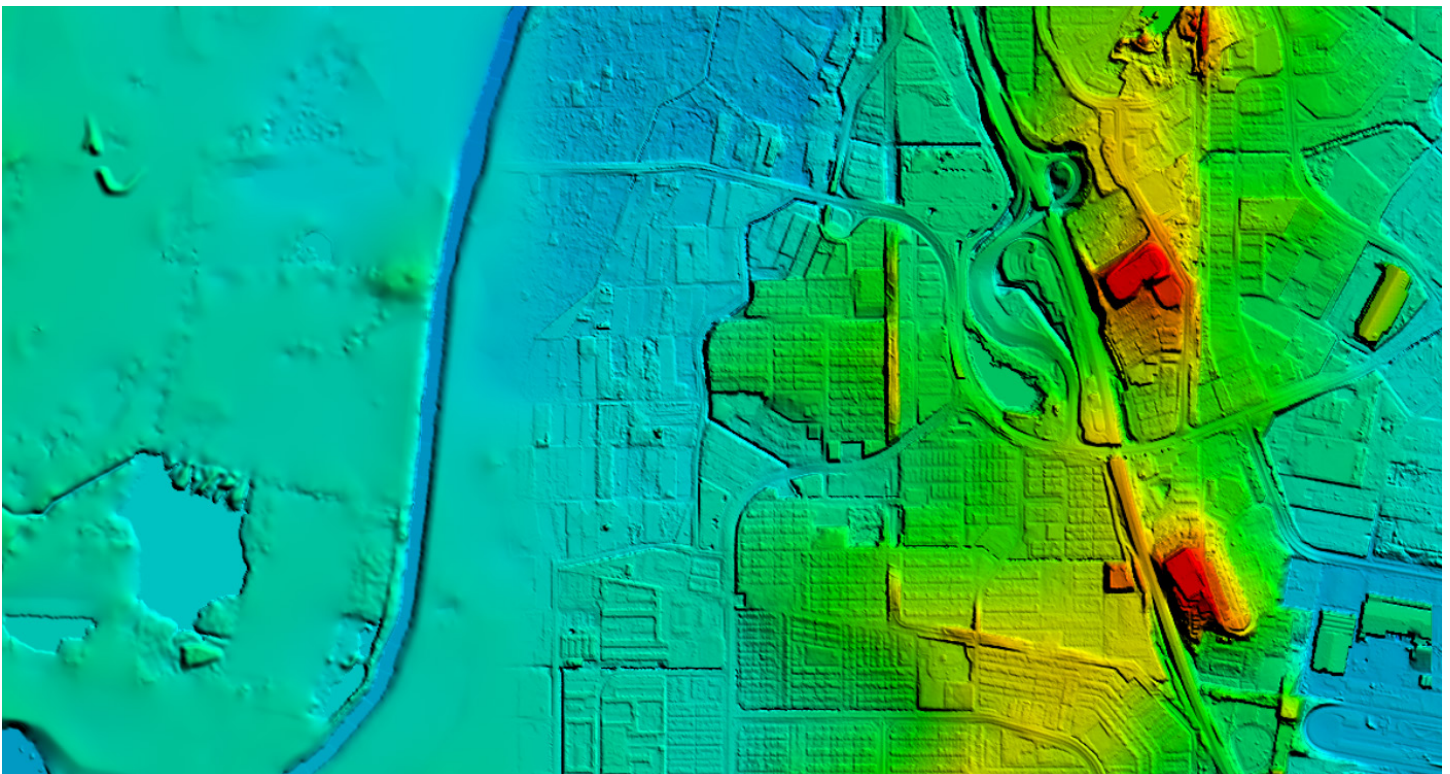
Visit www.intermap.com
or call +1 (303) 708-0955
for more information.

Intermap Technologies is an industry leader serving a diverse geospatial marketplace. We provide highly accurate geospatial information to help commercial enterprises and government agencies make better location-based decisions.

Copyright 2020. Intermap Technologies®
All Rights Reserved.

INTERMAP.COM

*High-resolution LiDAR (right)
seamlessly fused into a lower
resolution base map (left).* ▼



Your World. Made Simple.