

# Profile

## Global Terrain Analysis

### Accurate Point-to-Point Analysis

Intermap's Profile service provides quick and easy access to terrain profiles anywhere. Based upon our high-resolution NEXTMap® foundation data, our Profile service provides highly accurate results that can be used for a variety of applications. Hosted on the cloud, the service allows you to retrieve detailed terrain information anywhere in the world without the need to manage and host data. Profile is available through our web application or through an Application Programming Interface (API).

### Key Features and Benefits



#### Global Coverage

Access the service anytime to create profiles anywhere in the world



#### Unlimited Distance

Profile entire continents or just a city block with our Profile service



#### Simple Web Application

Easy-to-use app that is accessible over the web by any standard browser



#### Incredible Accuracy

Detailed elevation information with an absolute vertical accuracy of up to 1m LE90



#### Reliable and Proven

Used by customers worldwide in a variety of industries



#### Integrate into your Business

Integrate profiles directly into your workflow using our APIs

## Built on the Foundation of NEXTMap

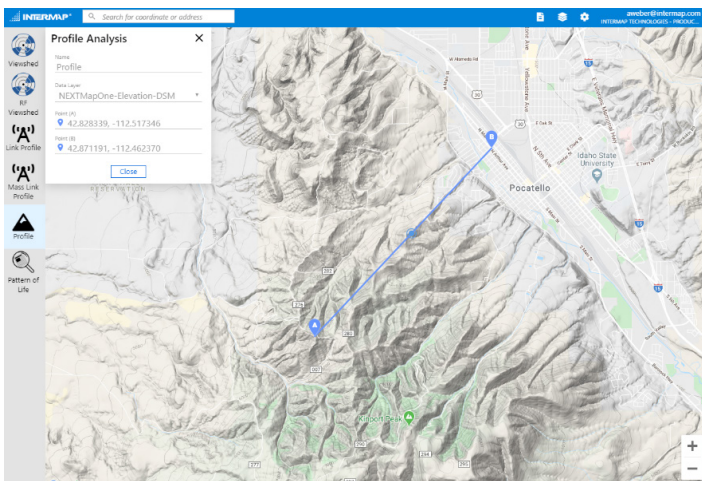
Our Profile service is generated from our highly accurate NEXTMap elevation models including NEXTMap One™. Get accurate point-to-point terrain profiles for anywhere in the world. Profiles can be run over either a digital surface model (DSM) or digital terrain model (DTM) with features such as buildings and trees removed. Profiles can consist of 3,000 points over any distance – across a city or across an entire continent. Our NEXTMap database is frequently updated providing you with the most current information.

## Low Cost of Ownership

Intermap's analytic services draw from a global database of over 500 million km<sup>2</sup> hosted in our secure cloud architecture. No need to pay for complicated data management systems, processing, or acquisition costs. Intermap's analytics allow you to get answers and information from a large database, for a fraction of the cost of owning and procuring the data to perform analysis yourself.

## Flexible Access

Analytics are available via API, for integration into your application, or via a web application. Additional datasets, online tools, and analytics are also available to perform simple analyses from any web browser and enable better terrain-based decisions without the need for any GIS software.



▲ Intermap's easy to use web application allows you to quickly generate a profile from your web browser.

Item	Specification
Service	Profile
Number of Samples	3000 points per profile
Resolution	1-10m posted
Abs Vertical Accuracy	Up to 1m LE90
Subscription	Pay as you go



▲ Measure building heights and distances at a local level (above) or entire mountain ranges at a national level (front cover).



Visit [www.intermap.com](http://www.intermap.com)  
or call +1 (303) 708-0955  
for more information.

Intermap Technologies is an industry leader serving a diverse geospatial marketplace. We provide highly accurate geospatial information to help commercial enterprises and government agencies make better location-based decisions.

Copyright 2020. Intermap Technologies®  
All Rights Reserved.

[INTERMAP.COM](http://INTERMAP.COM)



Your World. Made Simple.