

Telecom

Analytics Solution Suite

Detailed Global Wireless Planning

Intermap's Telecom Solution Suite leverages NEXTMap One™ data to provide analytics for telecommunications planning, including point-to-point and point-to-multipoint analyses. With the increase in frequency and bandwidth of RF radio links, accurate elevation data sets with high spatial detail, global coverage, and excellent vertical accuracy are required. Intermap's data provides a solid foundation for telecommunications planning as it is seamless, uniform, and void-free. The telecom solution suite offers on-demand access to Link Profile and Viewshed analytics, which are optimized for performance in telecom planning applications. Additionally, detailed Digital Surface Model (DSM) above ground data, Digital Terrain Model (DTM) ground data, and clutter data are available as an add-on for advanced users who required data for use in other RF modeling software.

Key Features and Benefits



Global Coverage

Data covering 100% of the Earth's surface is available for analytics.



Web-based Application

All data hosted in the cloud ensuring accessibility from all devices.



Subscription Model

Save money by paying for unlimited use in only the area you need.



Enhanced Spatial Detail

Details such as building models add to the spatial detail and reliability of the analytics.



Obtain Answers Fast

Online analytics are optimized for speed of performance, even at full data resolution.



Reliable Functionality

Intermap has 10 years of experience building web applications for Telecom.

Analytics: Link and Viewshed Planning

Intermap's Link Planning and Viewshed analytics are cloud-based APIs and web-based applications that allow you to quickly and efficiently identify obstructions blocking the lines of sight between towers. The online access takes the data management out of your hands and allows your focus to be on finding the right hardware and location for your customers.

Current High Accuracy Data

Intermap's NEXTMap One elevation data set provides a unique, accurate global foundation for telecommunications applications. The elevation dataset is created using Intermap's strict quality management process and provides the user with spatially rich features such as buildings, flattened roads, and natural terrain. It is built with a variety of inputs, including 2016 or newer satellite data. It is available globally and is ready for use in your network planning.

Available Package Levels

Analytic Package	Data Package
Viewshed	Analytic Package +
Link Profile	Clutter Data
RF Viewshed (Coming Soon)	DSM
Map Overlays	DTM



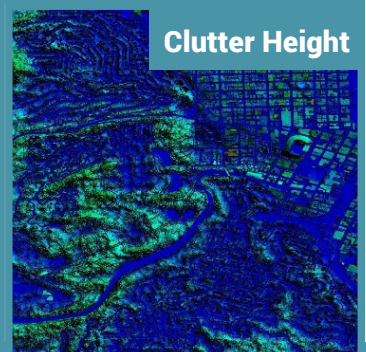
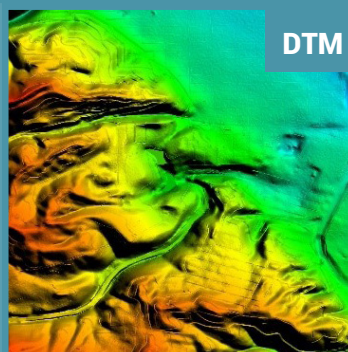
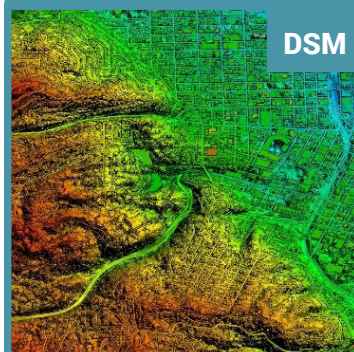
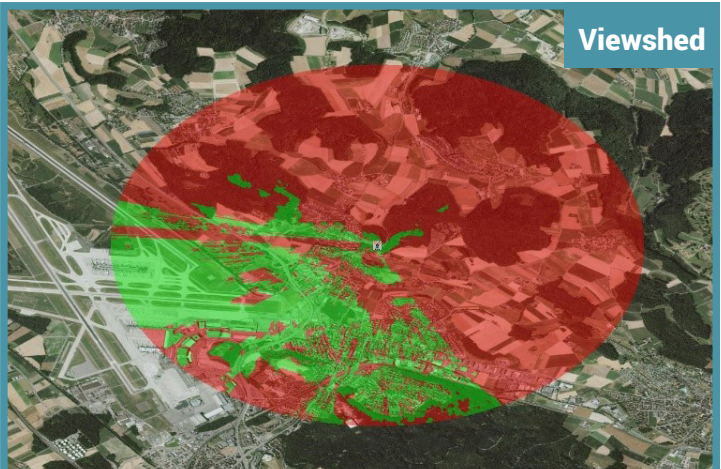
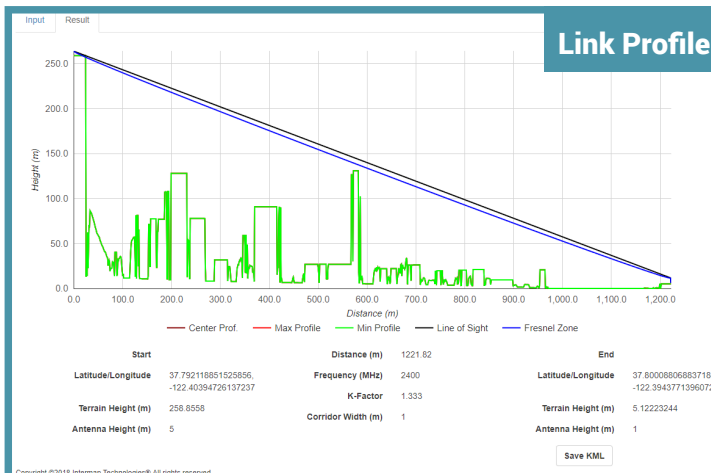
Visit www.intermap.com
or call +1 (303) 708-0955
for more information.

Intermap Technologies is an industry leader serving a diverse geospatial marketplace. We provide highly accurate geospatial information to help commercial enterprises and government agencies make better location-based decisions.

Copyright 2020. Intermap Technologies®
All Rights Reserved.

INTERMAP.COM

Intermap's Telecom Solution Suite includes subscription access to analytics and datasets as shown below.



Your World. Made Simple.